



BERKSHIRE HATHAWAY

HomeServices Ambassador Real Estate

Pacific Meadows 2 Story



711 S 159th Ave  
Omaha, NE 68118



4,022 Sqft



5 bed, 4 bath



\$334,000



<https://realestate.lifestyle360vr.com/listings/711-s-159th-avenue/>



THIS HOME IS  
**ALWAYS OPEN ONLINE™**  
TAKE A VIRTUAL TOUR!



**Cory Fuller**  
The 402 Home Team  
BHHS Ambassador Real Estate



c: (402) 680-2393  
e: cory.fuller@bhhsamb.com  
w: www.402HomeTeam.com





**DESCRIPTION**

---

Huge, well-maintained 2 story home with over 4000 finished square feet, 5 bedrooms, and 3 car garage tucked away on an over-sized corner lot in Pacific Meadows across the street from the West Papio Trail! Recent updates include remodeled kitchen and master bathrooms, many windows replaced throughout, new carpet in upstairs bedrooms and basement, whole exterior repainted, a new water heater, and more! Located in the award-winning Millard School District and minutes from shopping, dining, and the West Dodge Expressway. You will be proud to call this home for many years to come!

**PROPERTY FEATURES**

---

- Across Street from West Papio Trail
- Minutes from West Dodge Expressway
- Cedar Closet
- Granite Countertops
- Large Corner Lot
- New Carpet and Windows
- New Water Heater
- Remodeled Kitchen and Bathrooms
- Repainted Exterior
- Stainless Steel Appliances
- Walk-Out Basement

**WHAT'S NEARBY?**

---



**Education**

- Cottonwood Elementary School
- Kiewit Jr. High School
- Millard North High School

**Coffee Shops**

- Karma Koffee (1.1 mi)
- A Hill of Beans Coffee Roasters (1.61 mi)
- Whisk + Measure Specialty Bakery and Coffee (2.49 mi)

**Park**

- Ed Zorinsky Lake & Recreation Area (2.13 mi)
- Pepperwood Park (1.64 mi)

**Grocery**

- Baker's (1.56 mi)
- Hy-Vee (1.56 mi)
- Natural Grocers (1.68 mi)

**Restaurants**

- The Hill (2.15 mi)
- Blatt Beer & Table (1.51 mi)
- The Stokin' Goat (2.79 mi)



**Cory Fuller**

The 402 Home Team  
BHHS Ambassador Real Estate



c: (402) 680-2393  
e: cory.fuller@bhhsamb.com  
w: www.402HomeTeam.com

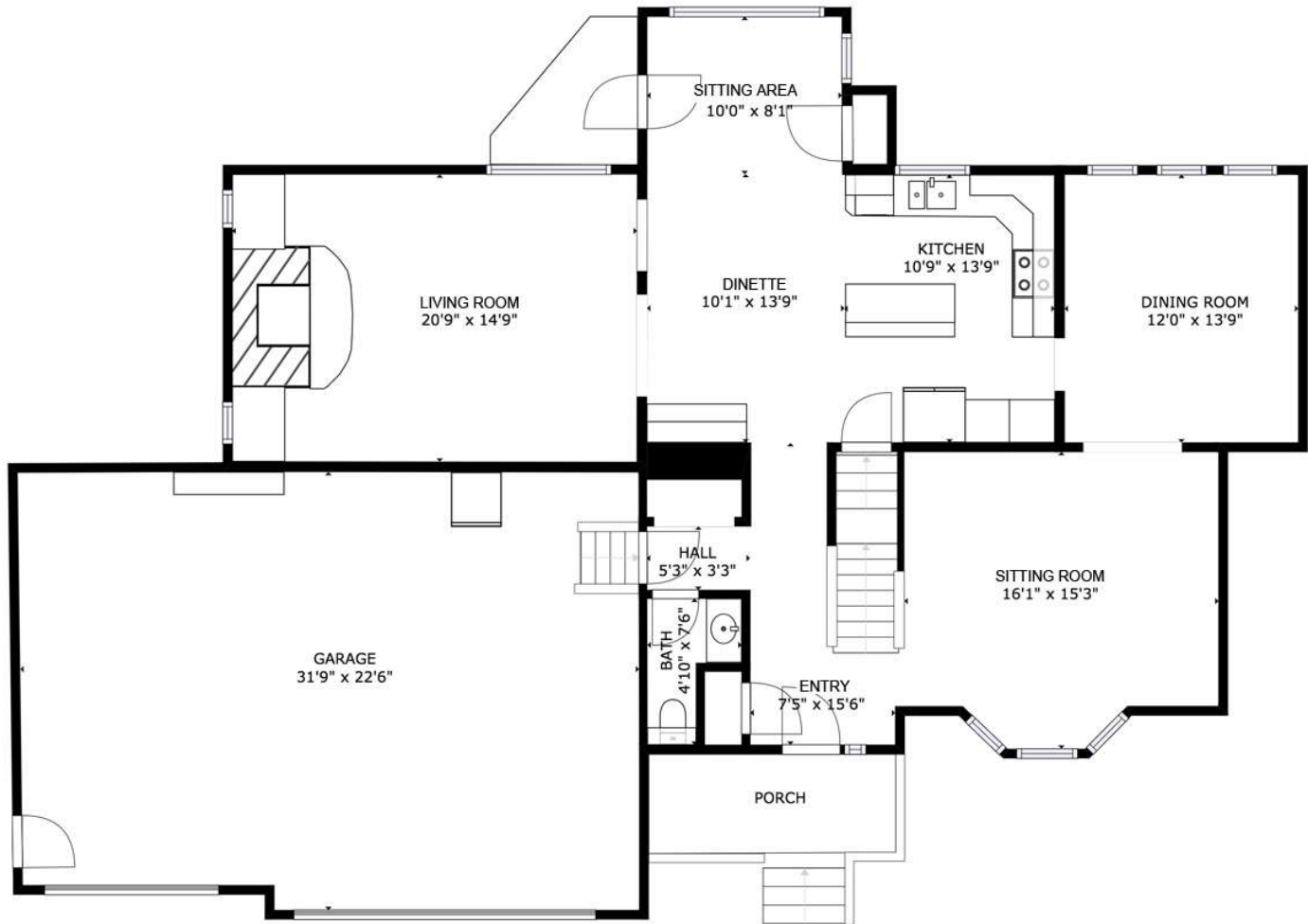


# MAIN FLOOR

711 S 159<sup>th</sup> Avenue

MAIN FLOOR: 1,296 sqft, LOWER LEVEL: 1,193 sqft, 2ND FLOOR: 1,451 sqft  
TOTAL: 3,939 sqft

SIZES AND DIMENSIONS ARE APPROXIMATE.  
ACTUAL MAY VARY.



**Cory Fuller**  
The 402 Home Team  
BHHS Ambassador Real Estate



c: (402) 680-2393  
e: cory.fuller@bhhsamb.com  
w: www.402HomeTeam.com

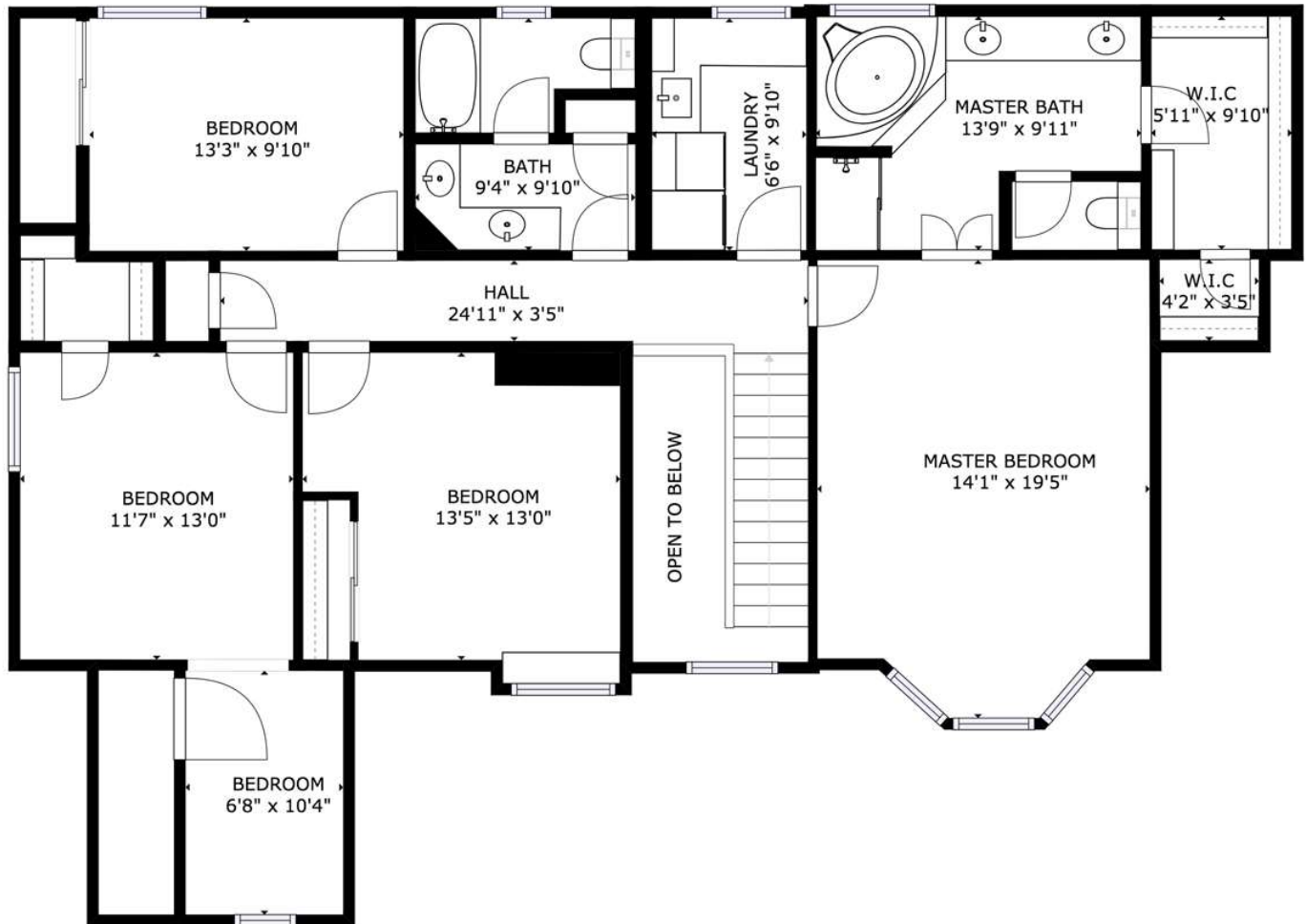


# FLOOR 2

## 711 S 159<sup>th</sup> Avenue

SIZES AND DIMENSIONS ARE APPROXIMATE.  
ACTUAL MAY VARY.

MAIN FLOOR: 1,296 sqft, LOWER LEVEL: 1,193 sqft, 2ND FLOOR: 1,451 sqft  
TOTAL: 3,939 sqft



**Cory Fuller**  
The 402 Home Team  
BHHS Ambassador Real Estate



c: (402) 680-2393  
e: cory.fuller@bhhsamb.com  
w: www.402HomeTeam.com



# LOWER LEVEL

## 711 S 159<sup>th</sup> Avenue

SIZES AND DIMENSIONS ARE APPROXIMATE.  
ACTUAL MAY VARY.

MAIN FLOOR: 1,296 sqft, LOWER LEVEL: 1,193 sqft, 2ND FLOOR: 1,451 sqft  
TOTAL: 3,939 sqft



**Cory Fuller**  
The 402 Home Team  
BHHS Ambassador Real Estate



c: (402) 680-2393  
e: cory.fuller@bhhsamb.com  
w: www.402HomeTeam.com