



BERKSHIRE  
HATHAWAY

HomeServices  
Ambassador Real Estate

Elk Ranch Estates 1.5 Story



3502 N 216<sup>th</sup> St.  
Omaha, NE 68022



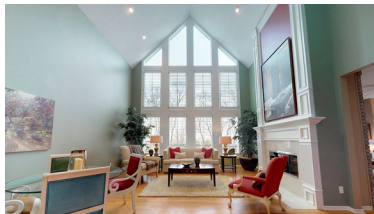
5,809 Sqft



5 bed, 7 bath



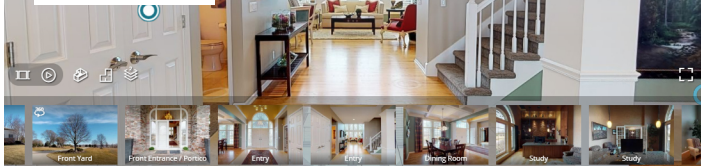
\$1,095,000



<https://realestate.lifestyle360vr.com/listings/3502-n-216th-st/>



THIS HOME IS  
**ALWAYS OPEN ONLINE™**  
TAKE A VIRTUAL TOUR!



**Don Fuller**  
Omaha Fuller Group  
BHHS Ambassador Real Estate



c: (402) 677-8070  
e: donfuller@donfullerhomes.com  
w: omahafullergroup.com





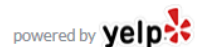
**DESCRIPTION**

Spectacular views of the Elkhorn River Valley! Nestled on 11+ acres, a rare opportunity to live in the beautiful Elk Ranch Estates! A scenic, private drive leads to this impressive 1.5 story custom home. The stunning 2 story entry w custom leaded glass invites you into a magnificent living rm w vaulted, 20 ft. high wall of windows, fireplace, and wet bar. Amenities in this exquisitely designed & meticulously maintained home include: dining room w built-in custom china hutch; den/office with built-in cabinets, granite tops, custom-designed wall feature, and leaded glass windows; remodeled gourmet kitchen with cherry cabinets, granite tops, and Thermador appliances; cozy hearth room with fireplace; master suite with built-in display shelves, vaulted ceiling, ambient lighting, and master suite bath with slate tile floor & shower; walk-out lower level w 2nd kitchen; exercise room; geothermal heat pumps; security system ....and many more! All this, plus a heated 40' X 50' outbuilding. Horses permitted!

**PROPERTY FEATURES**

- 11+ Acres
- 2 Story Entry
- 2<sup>nd</sup> Kitchen
- 40' x 50' Outbuilding
- Exercise Room
- Intercom
- Whirlpool Tub
- Overlooks Elkhorn Valley
- Elkhorn Public Schools
- Geothermal Heating/Cooling
- Private Drive
- Security System
- Wet Bar
- Deck and Patio
- LL Daylight Windows
- 25' Vaulted Living Room Ceiling
- Remodeled Gourmet Kitchen
- Cherrywood Cabinets
- Granite Countertops
- Stainless Steel Appliances
- Formal Dining Room
- Horses Permitted

**WHAT'S NEARBY?**



**Education**

- Elkhorn Public Schools (0.83 mi)
- The Hearth Academy Preschool (1.24 mi)

**Park**

- Ed Zorinsky Lake & Recreation Area (7.0 mi)
- Pepperwood Park (5.57 mi)
- Lawrence Youngman Park (2.32 mi)

**Grocery**

- Rick's Meats (1.23 mi)
- Baker's (5.22 mi)
- Hy-Vee (4.23 mi)

**Restaurants**

- Simply Delicious Restaurant (4.91 mi)
- The Stokin' Goat (4.96 mi)
- The Hill (3.38 mi)

**Coffee Shops**

- Fala's Treasures & Coffee House (1.16 mi)
- Karma Koffee (5.46 mi)
- Brew Coffee House & Tasting Room (4.92 mi)



**Don Fuller**

Omaha Fuller Group  
BHHS Ambassador Real Estate

c: (402) 677-8070  
e: donfuller@donfullerhomes.com  
w: omahafullergroup.com

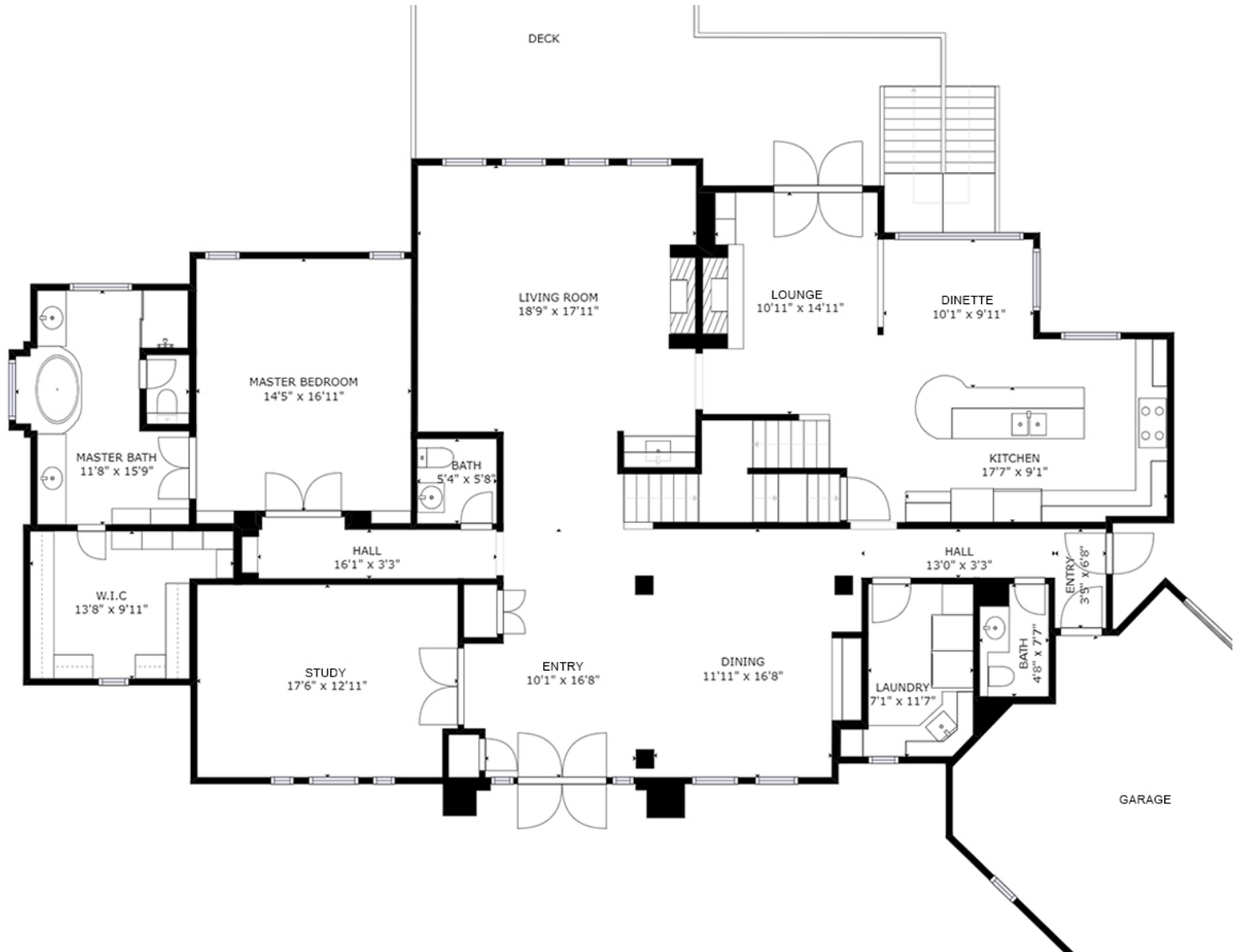




# MAIN FLOOR

3502 N 216<sup>th</sup> St

SIZES AND DIMENSIONS ARE APPROXIMATE.  
ACTUAL MAY VARY.



**Don Fuller**  
Omaha Fuller Group  
BHHS Ambassador Real Estate



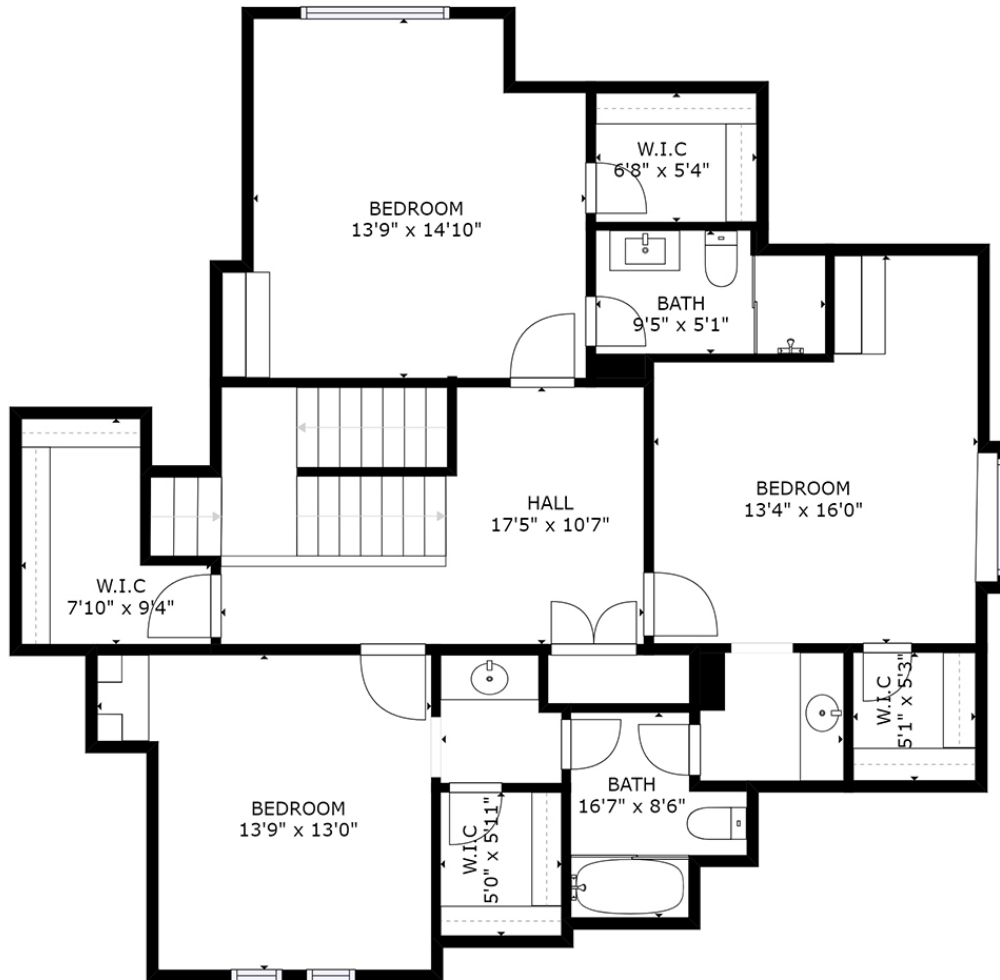
c: (402) 677-8070  
e: donfuller@donfullerhomes.com  
w: omahafullergroup.com



# FLOOR 2

3502 N 216<sup>th</sup> St

SIZES AND DIMENSIONS ARE APPROXIMATE.  
ACTUAL MAY VARY.



**Don Fuller**  
Omaha Fuller Group  
BHHS Ambassador Real Estate



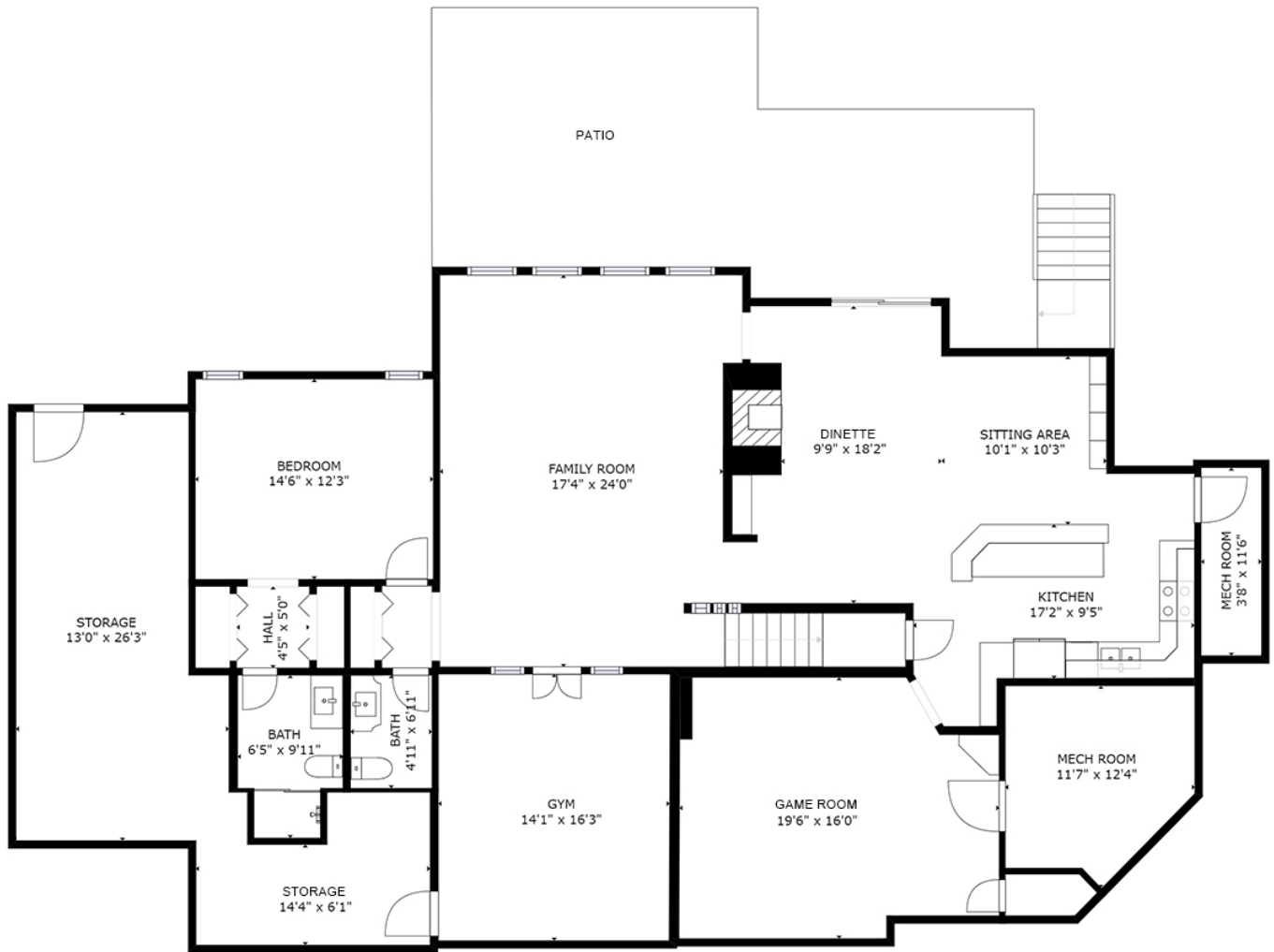
c: (402) 677-8070  
e: donfuller@donfullerhomes.com  
w: omahafullergroup.com



# LOWER LEVEL

3502 N 216<sup>th</sup> St

SIZES AND DIMENSIONS ARE APPROXIMATE.  
ACTUAL MAY VARY.



**Don Fuller**  
Omaha Fuller Group  
BHHS Ambassador Real Estate



c: (402) 677-8070  
e: donfuller@donfullerhomes.com  
w: omahafullergroup.com