

1607 Chaput Dr.
Bellevue, NE 68005



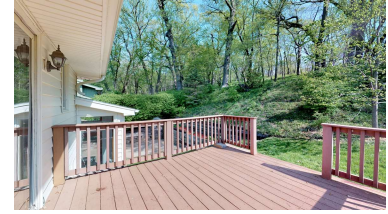
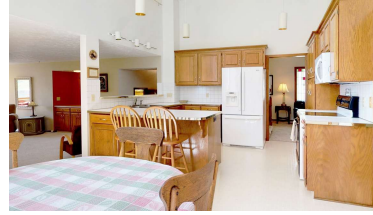
2,468 Sqft



3 bed, 4 bath



\$230,000



<https://realestate.lifestyle360vr.com/listings/1607-chaput-dr/>



THIS HOME IS
ALWAYS OPEN ONLINE™
TAKE A VIRTUAL TOUR!



Teri & Sara Team
NEBRASKA Realty



Sara: (402) 917-2967
Teri: (402) 669-0545
e: teriandsara@nebraskarealty.com
w: www.teriandsara.com

DESCRIPTION

One of a Kind Home you need to see to believe. Updated & very well cared for. Located 1 block East of Bellevue Blvd. on a dead end (cul de sac) shared by few homes. Minutes to Kennedy Freeway & Downtown Omaha. Move-in Condition. Newer carpet throughout, fresh paint, updated bathrooms, neutral decor, skylights and spacious rooms throughout. Low maintenance/high quality vinyl siding, heat pump, and high efficiency gas furnace make for low utility bills. Both kitchen stove and dryer set up for gas or electric. This home flows effortlessly from room to room. Soaring vaulted ceilings. Master BR features large walk in closet W/Built Ins, private doors to composite deck, recessed ceiling, double sinks, separate shower, and huge whirlpool tub. Located within blocks of Fontenelle Forest, it is not unusual to see wildlife while relaxing on the back deck. 179 feet deep lot. Over ¼ Acre.

PROPERTY FEATURES

- Bellevue Public Schools
- Central Air, Heat Pump, High-Efficiency Furnace
- Deck and Patio
- Fontenelle Area
- Fresh Paint
- Updated Bathrooms
- Vaulted Ceilings
- Spacious Floor Plan
- Newer Carpet Throughout
- Skylights
- Minutes to Kennedy Freeway

WHAT'S NEARBY?

powered by 

Education

- Bellevue Public Schools
- Noah's Ark Preschool & Childcare (1.36 mi)

Park

- Swanson Park (2.42 mi)
- Haworth Park (3.09 mi)
- Heartland of America Park (6.03 mi)

Grocery

- ALDI (1.7 mi)
- Baker's (3.48 mi)

Restaurants

- Stella's Hamburgers (0.95 mi)
- The Special Restaurant (0.75 mi)
- Ono Pinay Kitchen (2.62 mi)

Coffee Shops

- Downtown Coffee Shop (2.7 mi)
- Archetype Coffee – Little Bohemia (5.11 mi)
- First Watch (1.71 mi)



Teri & Sara Team
NEBRASKA Realty

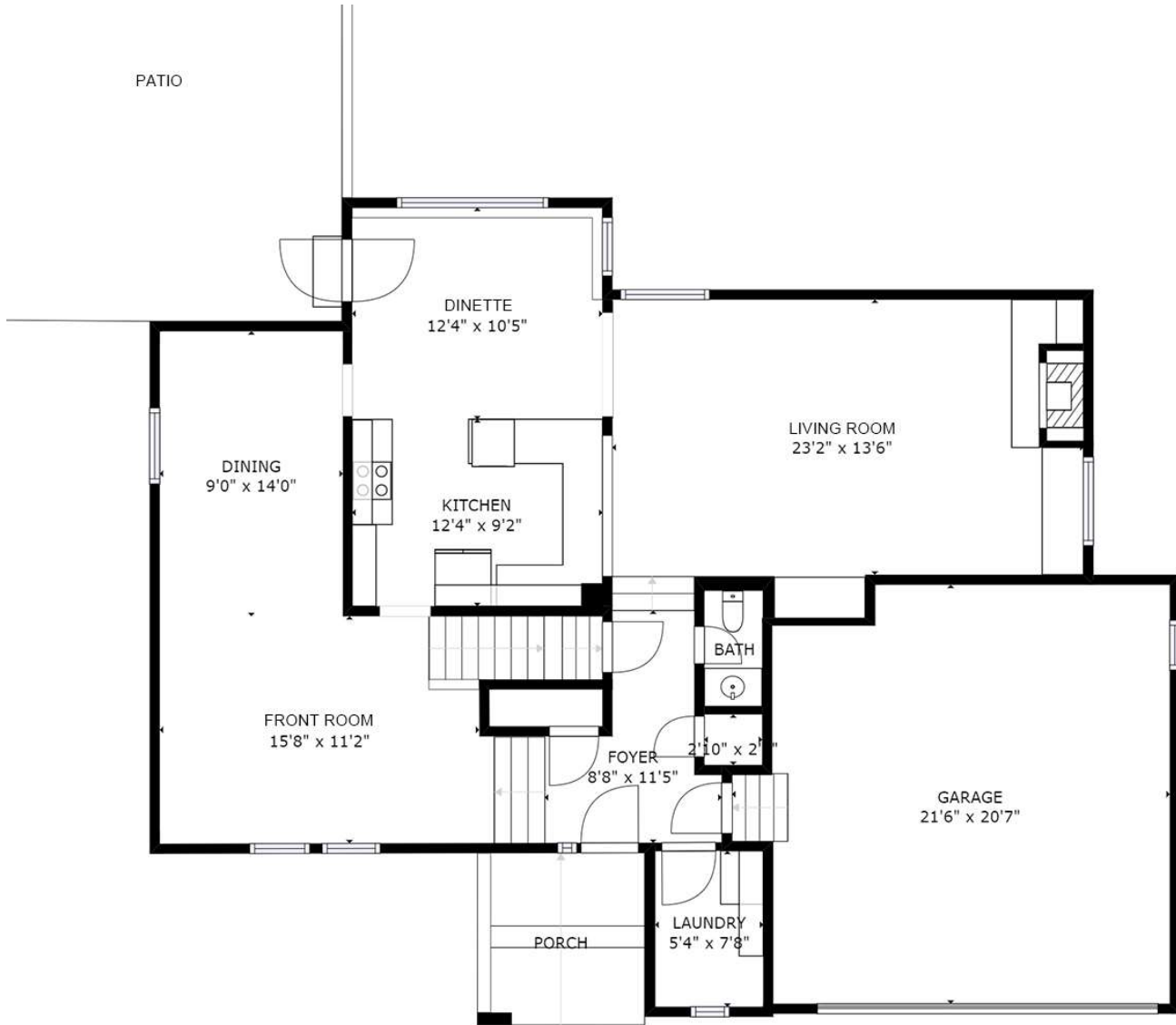


Sara: (402) 917-2967
Teri: (402) 669-0545
e: teriandsara@nebraskarealty.com
w: www.teriandsara.com

MAIN FLOOR

1607 Chaput Dr.

SIZES AND DIMENSIONS ARE APPROXIMATE.
ACTUAL MAY VARY.



Teri & Sara Team
NEBRASKA Realty

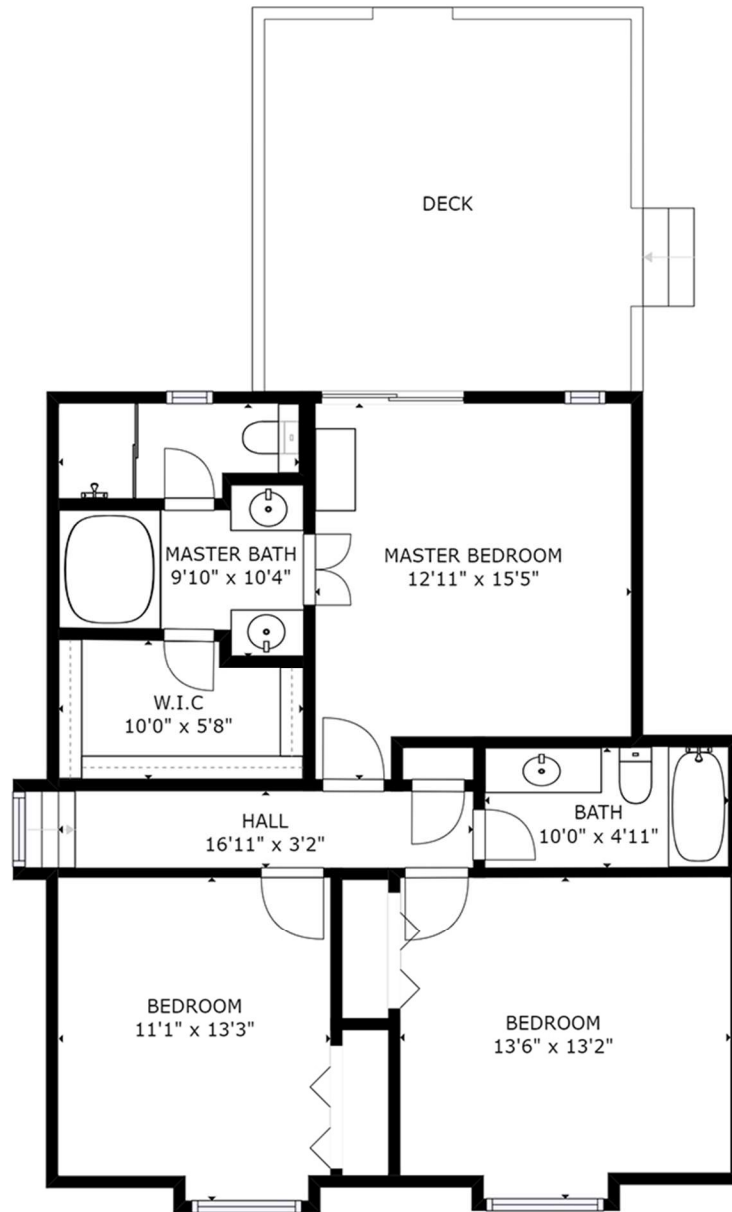


Sara: (402) 917-2967
Teri: (402) 669-0545
e: teriandsara@nebraskarealty.com
w: www.teriandsara.com

FLOOR 2

1607 Chaput Dr.

SIZES AND DIMENSIONS ARE APPROXIMATE.
ACTUAL MAY VARY.



Teri & Sara Team
NEBRASKA Realty

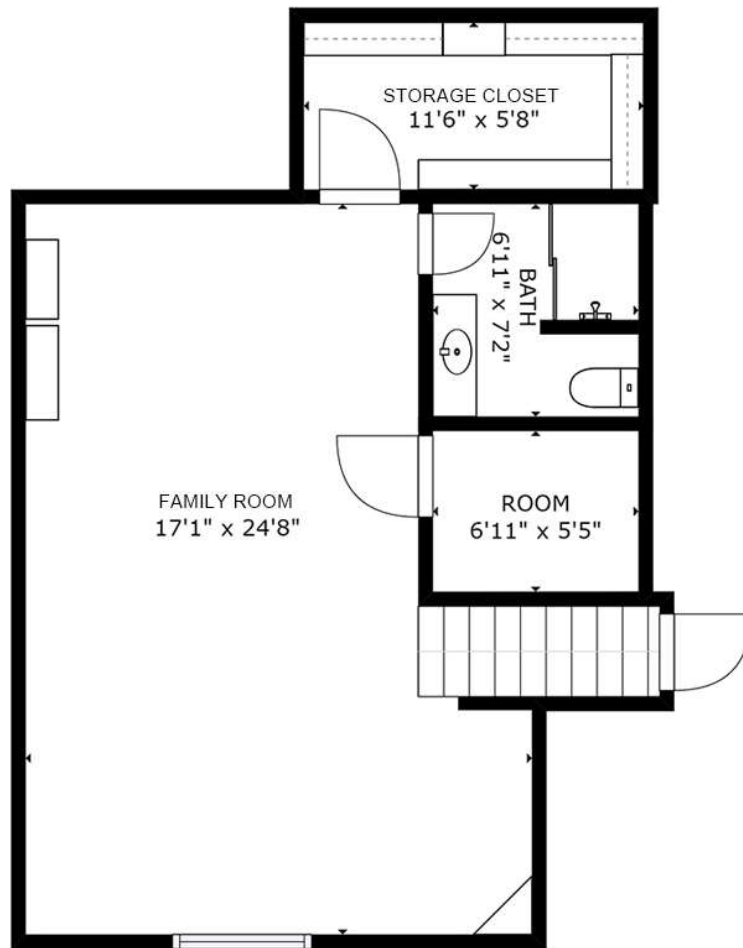


Sara: (402) 917-2967
Teri: (402) 669-0545
e: teriandsara@nebraskarealty.com
w: www.teriandsara.com

LOWER LEVEL

1607 Chaput Dr.

SIZES AND DIMENSIONS ARE APPROXIMATE.
ACTUAL MAY VARY.



Teri & Sara Team
NEBRASKA Realty



Sara: (402) 917-2967
Teri: (402) 669-0545
e: teriandsara@nebraskarealty.com
w: www.teriandsara.com