

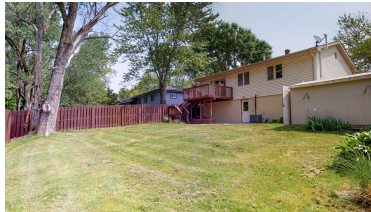
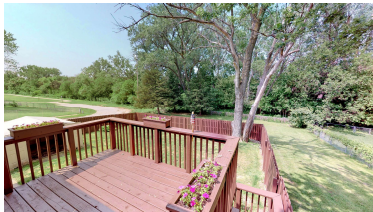


 1112 Bryan Ave.
Bellevue, NE 68005

 1,430 Sqft

 3 bed, 2 bath

 \$175,000



 <https://realestate.lifestyle360vr.com/listings/1112-bryan-ave/>



Teri & Sara Team
NEBRASKA Realty



Sara: (402) 917-2967
Teri: (402) 669-0545
e: teriandsara@nebraskarealty.com
w: www.teriandsara.com

DESCRIPTION

Picture Perfect inside & out. Neutral decor. Move-in condition. Large living room with lots of natural daylight. Kitchen has lots of cabinets, big dining area, and overlooks private, treed back yard. Full bath on main & (2) 1/2 baths in lower level. Family room in lower level with daylight windows, private 1/2 bathroom, and MUD/Laundry room walks out to large patio. Mud/Laundry room has a shower and soaking tub. Lot is 178 feet deep & heavily wooded behind. 6 foot privacy fence encloses some of the yard in addition to Chain Link fence on sides and back. Private/Secluded level corner lot. Large parking pad. Deeper than usual garage and shed. All appliances stay! Bellevue Public Schools.

PROPERTY FEATURES

- Appliances Included
- Bellevue Public Schools
- Central Air
- Corner Lot
- Deck and Patio
- Extra Parking Slab
- Privacy Fence
- Forced Air Heating
- Large Dining Area
- Lots of Kitchen Cabinets
- Pantry
- Tile Kitchen and Bathroom Floors
- LL Daylight Windows
- Pantry

WHAT'S NEARBY?

powered by 

Education

- Bellevue Public Schools
- Noah's Ark Preschool & Childcare (1.21 mi)

Park

- Swanson Park (1.81 mi)
- Haworth Park (2.75 mi)
- Elmwood Park (6.21 mi)

Grocery

- Baker's Supermarkets (1.87 mi)
- ALDI (0.92 mi)
- Walmart Supercenter (0.5 mi)

Restaurants

- Stella's Hamburgers (0.99 mi)
- Ono Pinay Kitchen (2.02 mi)
- The Special Restaurant (1.16 mi)

Coffee Shops

- Downtown Coffee Shop (2.22 mi)
- Starbucks (0.66 mi)
- First Watch – Bellevue (0.74 mi)



Teri & Sara Team
NEBRASKA Realty



Sara: (402) 917-2967
Teri: (402) 669-0545
e: teriandsara@nebraskarealty.com
w: www.teriandsara.com