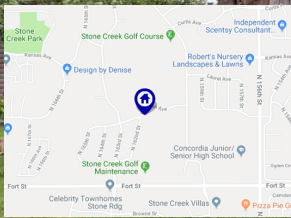




**BERKSHIRE
HATHAWAY**

**HomeServices
Ambassador Real Estate**

Stone Creek Street of Dreams 2 Story



REDUCED OVER \$25,000!!!



16135 Hartman Ave
Omaha, NE 68116



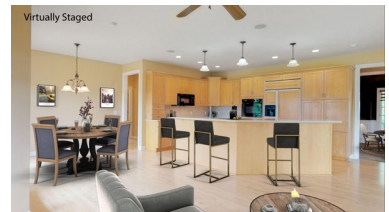
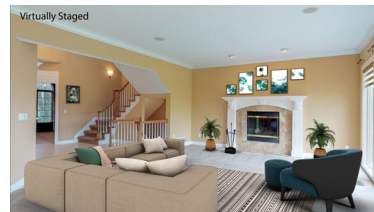
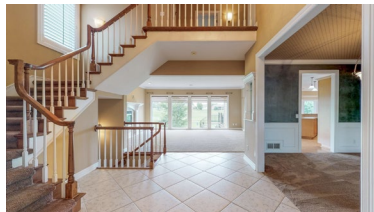
4,282 Sqft



4 bed, 5 bath



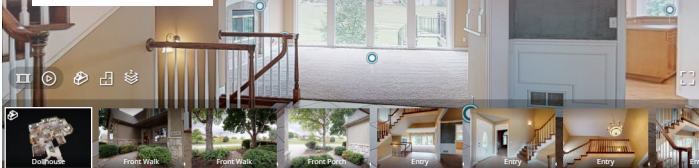
\$439,900



<https://realestate.lifestyle360vr.com/listings/16135-hartman-avenue/>



THIS HOME IS
ALWAYS OPEN ONLINE™
TAKE A VIRTUAL TOUR!



Cory Fuller
The 402 Home Team
BHHS Ambassador Real Estate



c: (402) 680-2393
e: cory.fuller@bhhsamb.com
w: www.402HomeTeam.com



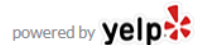
DESCRIPTION

REDUCED OVER \$25,000!!! Entertaining and relaxation go hand-in-hand with this breathtaking two-story home, overlooking hole #4 Greystone on the beautiful Stone Creek Golf Course! The location couldn't be better, as it is tucked away in Stone Creek, yet less than a mile from the new Flanagan Lake, the new Omaha Public Schools high school being built, and minutes from lots of dining and shopping options! This well taken care of home has had almost \$45,000 worth of upgrades and maintenance, including a new impact resistant-shingle roof, 2 new front windows with arched windows, refinishing of wood floors, approx. \$15K in carpet throughout home with upgraded padding, new furnace, and more, all within the last two years! Spacious kitchen with lots of cabinets, 3 fireplaces, every bedroom with its own bathroom access, a huge master suite, a basement that is an entertainer's dream, a large deck to enjoy the incredible golf course view, and over 4200 finished sqft will make you proud to call this HOME!

PROPERTY FEATURES

- 18' Entry Ceiling
- 2 New Front Windows
- 3 Gas Fireplaces
- Appliances Included
- Central Air Cooling, Forced Air Heating
- Huge Master Suite
- Large Kitchen Island and Lots of Cabinets
- New Carpet, Furnace, and Roof!
- Wet Bar
- Wired for Music and Entertainment!
- Central Vacuum
- Deck and Patio
- Finished Basement
- Floor-to-Ceiling Windows
- Omaha Public Schools
- Overlooks Stone Creek Golf Course
- Refinished Wood Floors
- Security and Sprinkler Systems
- Vaulted Study and Bedroom Ceilings

WHAT'S NEARBY?



Education

- Concordia Junior/Senior High School (1.0 mi)
- Omaha Northwest High School
- Alfonza W. Davis Middle School
- Saddlebrook Elementary School

Park

- Flanagan Lake (<1 mi)
- Stone Creek Park
- Standing Bear Lake (2.33 mi)

Grocery

- Fresh Thyme Farmer's Market (1.72 mi)
- Hy-Vee (1.46 mi)
- Wal-Mart Supercenter (1.7 mi)

Restaurants

- The Stokin' Goat (2.79 mi)
- Lombardo's Bistro & Bar (2.8 mi)

Restaurants (Cont.)

- The Union Pizzeria and Sports Bar (2.0 mi)

Coffee Shops

- Starbucks (2.9 mi)
- Scooters (3.0 mi)
- Karma Koffee (3.14 mi)



Cory Fuller

The 402 Home Team

BHHS Ambassador Real Estate



c: (402) 680-2393

e: cory.fuller@bhhsamb.com

w: www.402HomeTeam.com

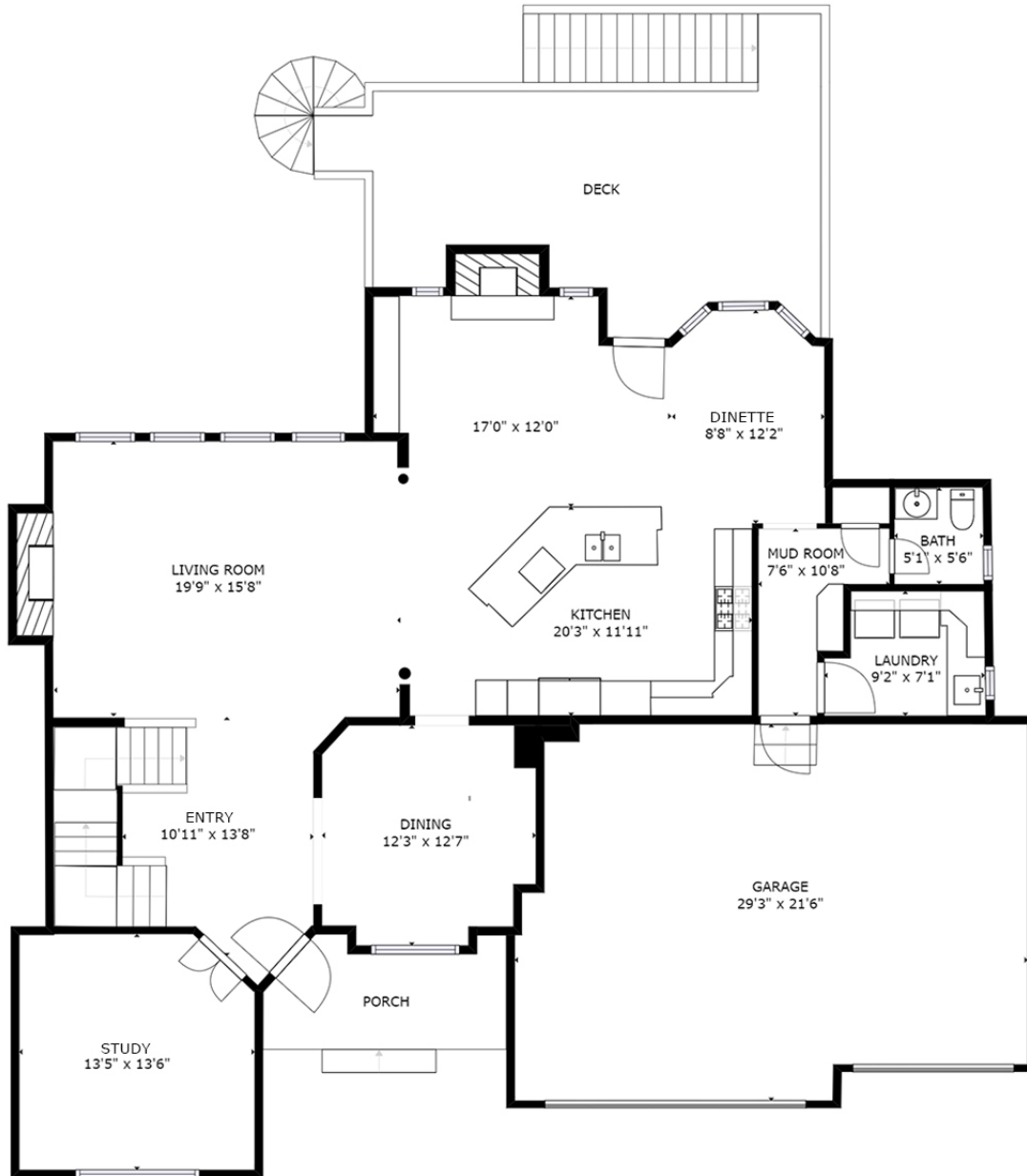


MAIN FLOOR

16135 Hartman Avenue

SIZES AND DIMENSIONS ARE APPROXIMATE.
ACTUAL MAY VARY.

MAIN FLOOR: 1,552 sqft, LOWER LEVEL: 1,396 sqft, 2ND FLOOR: 1,646 sqft
TOTAL: 4,594 sqft



Cory Fuller
The 402 Home Team
BHHS Ambassador Real Estate



c: (402) 680-2393
e: cory.fuller@bhhsamb.com
w: www.402HomeTeam.com



FLOOR 2

16135 Hartman Avenue

SIZES AND DIMENSIONS ARE APPROXIMATE.
ACTUAL MAY VARY.

MAIN FLOOR: 1,552 sqft, LOWER LEVEL: 1,396 sqft, 2ND FLOOR: 1,646 sqft
TOTAL: 4,594 sqft



Cory Fuller
The 402 Home Team
BHHS Ambassador Real Estate



c: (402) 680-2393
e: cory.fuller@bhhsamb.com
w: www.402HomeTeam.com



LOWER LEVEL

16135 Hartman Avenue

SIZES AND DIMENSIONS ARE APPROXIMATE.
ACTUAL MAY VARY.

MAIN FLOOR: 1,552 sqft, LOWER LEVEL: 1,396 sqft, 2ND FLOOR: 1,646 sqft
TOTAL: 4,594 sqft



Cory Fuller
The 402 Home Team
BHHS Ambassador Real Estate



c: (402) 680-2393
e: cory.fuller@bhhsamb.com
w: www.402HomeTeam.com