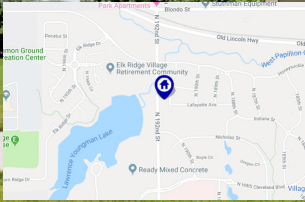




BERKSHIRE
HATHAWAY

HomeServices
Ambassador Real Estate

Silverleaf Estates 2 Story Home



1308 N 191st Ave.
Omaha, NE 68022



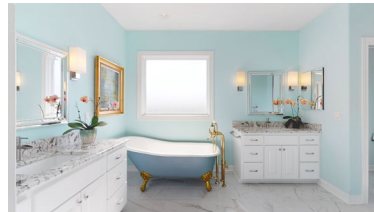
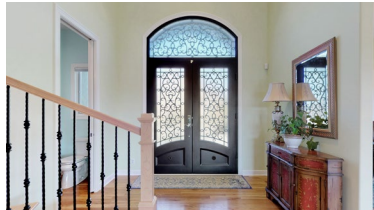
3,749 Sqft



5 bed, 5 bath



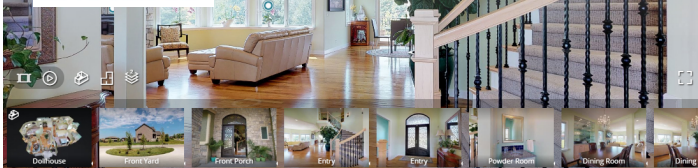
\$599,950



<https://realestate.lifestyle360vr.com/listings/1308-n-191st-ave/>



THIS HOME IS
ALWAYS OPEN ONLINE™
TAKE A VIRTUAL TOUR!



Don Fuller
Omaha Fuller Group
BHHS Ambassador Real Estate



c: (402) 677-8070
e: donfuller@donfullerhomes.com
w: omahafullergroup.com



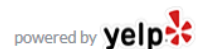
DESCRIPTION

Living is easy in this elegant two-story home built in 2018, in the desirable Silverleaf Estates Subdivision. You will be immediately impressed when entering this pristine home through the magnificent high-end steel & wrought iron French doors. The grand 2-story entry and curved staircase flow easily into a spacious, bright and open floorplan with white oak floors that flow throughout the home. This home was built with natural light in mind, which has been captured on each floor by an abundance of wonderful windows! Its sophisticated formal dining room will impress your dinner guests with serene, ambient lighting in a built-in china hutch. Cozy up to the beautiful great room's stone fireplace then grab a snack from the gourmet kitchen with stainless appliances, wine frig, granite tops, custom cabinets and walk-in pantry. This unique floorplan has a 1st-floor "mother-in-law suite" with a private bath and an additional 4 bedrooms on the 2nd floor where French doors open to a spacious master suite. You will be bathed in luxury in the elegant spa-like master bathroom with a designer claw foot tub, glass & tile shower and heated floors. Enjoy evenings in a private backyard with no rear neighbors as you relax on the covered composite deck or the walkout patio with stone firepit. This is a home that is easy to love - *so prepare to fall in love!*

PROPERTY FEATURES

- White Oak Floors Throughout
- 20' Entry Ceiling w/ Beautiful Fixture
- 10' Ceilings and 8' Doors on First floor
- Formal Dining Room w/ Built-in China Hutch
- Granite Countertops
- Master Bathroom Heated Tile Floor
- Master Bathroom Designer Claw Foot Tub
- Walk-out Basement Patio w/ Fire Pit
- Covered Composite Deck
- Magnificent, Custom Steel and Wrought-Iron Front Doors
- Floor-to-Ceiling Stone Gas Fireplace
- Security System
- Stainless Steel Appliances
- Walk-in Pantry

WHAT'S NEARBY?



Education

- Elkhorn Public Schools
- Heartland Montessori Preschool (4.42 mi)
- Premier Academy (0.6 mi)

Park

- Lawrence Youngman Park (0.24 mi)
- Pepperwood Park (1.13 mi)
- Zorinsky Lake & Recreation Area (4.65 mi)

Grocery

- Rick's Meats (1.29 mi)
- Hy-Vee (1.87 mi)
- Super Saver (6.2 mi)

Restaurants

- Jams Legacy (3.19 mi)
- The Hill (0.98 mi)
- Firebirds Wood Fired Grill (1.6 mi)

Coffee Shops

- Fala's Treasures and Coffee House (1.3 mi)
- Karma Koffee (3.11 mi)
- Whisk + Measure Specialty Bakery and Coffee (5.5 mi)



Don Fuller

Omaha Fuller Group
BHHS Ambassador Real Estate

c: (402) 677-8070
e: donfuller@donfullerhomes.com
w: omahafullergroup.com





MAIN FLOOR

1308 N 191st Ave

SIZES AND DIMENSIONS ARE APPROXIMATE.
ACTUAL MAY VARY.



Don Fuller
Omaha Fuller Group
BHHS Ambassador Real Estate



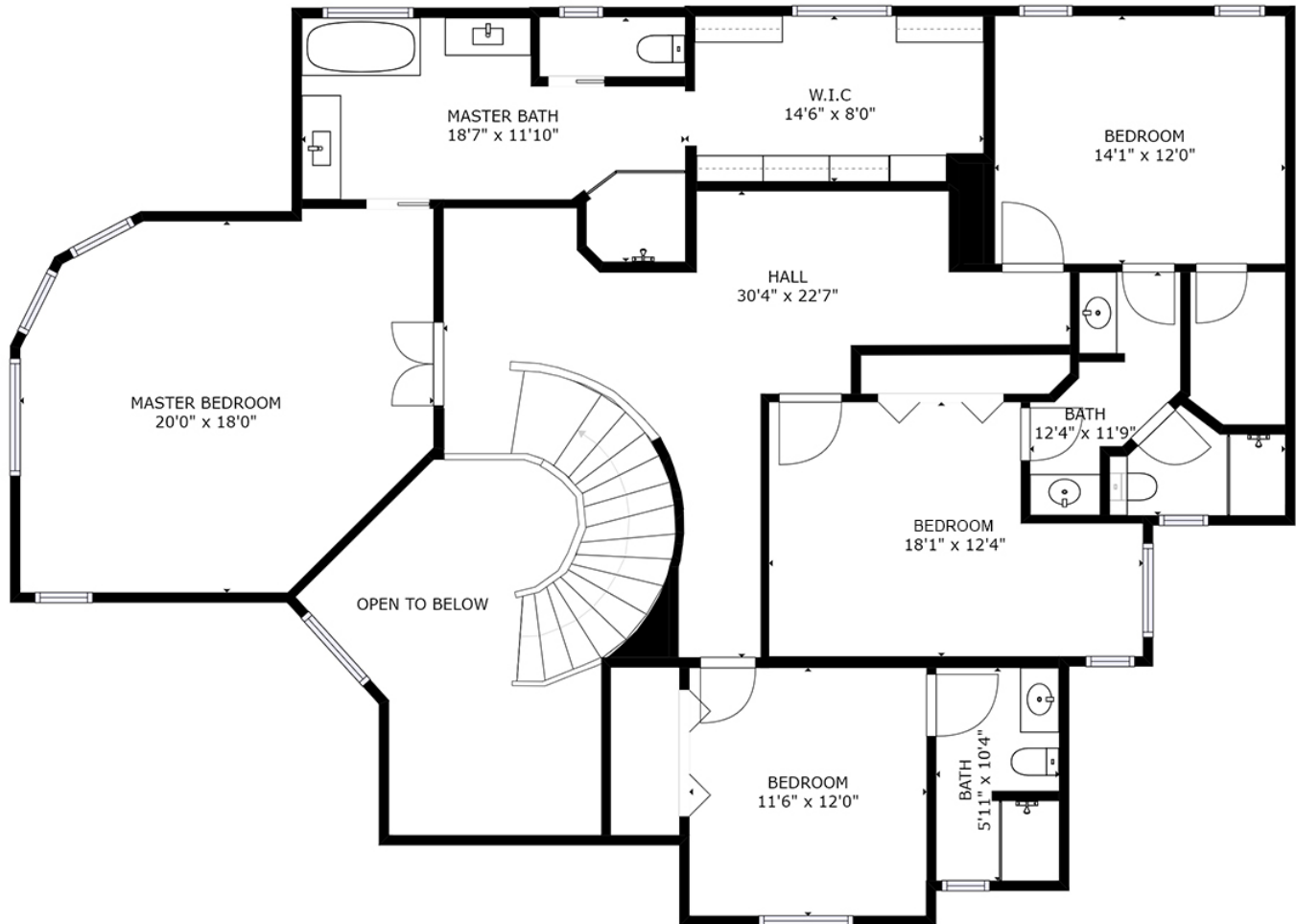
c: (402) 677-8070
e: donfuller@donfullerhomes.com
w: omahafullergroup.com



FLOOR 2

1308 N 191st Ave

SIZES AND DIMENSIONS ARE APPROXIMATE.
ACTUAL MAY VARY.



Don Fuller
Omaha Fuller Group
BHHS Ambassador Real Estate



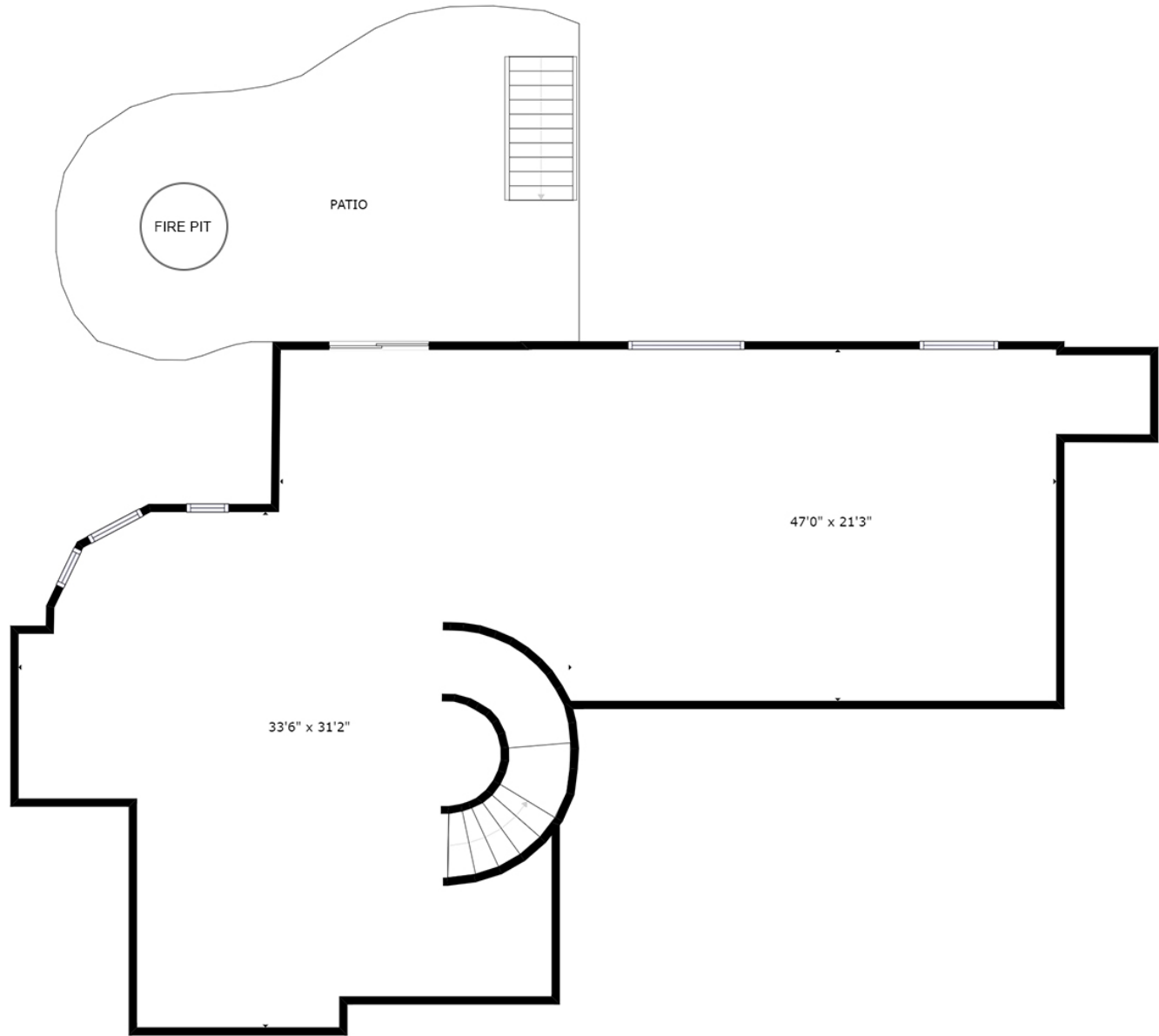
c: (402) 677-8070
e: donfuller@donfullerhomes.com
w: omahafullergroup.com



LOWER LEVEL

1308 N 191st Ave

SIZES AND DIMENSIONS ARE APPROXIMATE.
ACTUAL MAY VARY.



Don Fuller
Omaha Fuller Group
BHHS Ambassador Real Estate



c: (402) 677-8070
e: donfuller@donfullerhomes.com
w: omahafullergroup.com