

**2941 Indian Peak Dr.
Morse Bluff, NE 68648**



5,860 Sqft



5 bed, 3 bath



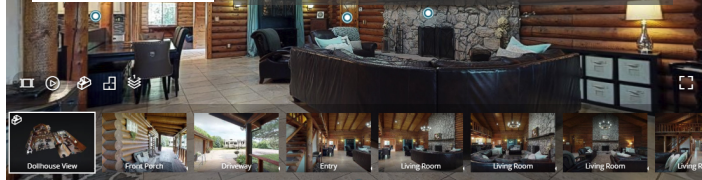
\$450,000



<https://realestate.lifestyle360vr.com/listings/2941-indian-peak-dr/>



**THIS HOME IS
ALWAYS OPEN ONLINE™
TAKE A VIRTUAL TOUR!**



Sam Heineman

Broker

Dodge County Realty Group

c: (402) 880-4864

e: sheineman@dodgecountyrealtygroup.com

w: www.dodgecountyrealtygroup.com

DESCRIPTION

Exquisite 5,800 SF log home on 2.62 acres backing up to a forest that provides wonderful privacy as well as ample wildlife viewing. Completely updated in the last 3 years. Newly renovated kitchen with new stainless-steel appliances, concrete counter tops, new cabinets, large pantry, and a separate coffee/beverage center opens up to main living area. Large main floor bath with beautiful tiling, custom walk-in shower, freestanding soaking tub, and separate vanity area. Main floor laundry. Sprawling 1,200 SF master suite with his and hers walk-in closets, large private outdoor balcony, and beautifully updated bath overlooking the garden. Main living area has sky-scraping ceilings and a breathtaking floor-to-ceiling stone fireplace. Large, partially finished 4,500 SF basement. Attached over-sized 2 car garage. The home appraised for \$490,000 in 2017. Since then, the master bathroom and basement bathrooms were remodeled, new flooring was installed upstairs, and bedroom walls were refinished.

PROPERTY FEATURES

- Completely Updated Throughout
- Easily Manageable Property Size
- Easy Commutes
- Floor-to-Ceiling Stone Fireplace
- Great Schools: North Bend
- Large Bedrooms and Closets
- Newly Renovated Kitchen and Baths
- Open Concept Kitchen
- Plenty of Privacy
- Priced under \$100/sqft
- Private Master Outdoor Balcony
- Spacious 1200 sqft Master Suite

WHAT'S NEARBY?

Education

- North Bend Schools
- Dodge County Project Head Start (13.69 mi)
- Premiere Academy (0.6 mi)

Parks

- Fremont State Recreation Area (10.41 mi)
- Czechland Lake Recreation Area (9.0 mi)

Grocery

- Baker's (14.92 mi)
- Hy-Vee (14.87 mi)
- Wahoo Meat Locker (17 mi)

Restaurants

- Corner Café (2.36 mi)
- Leroy's Steakhouse (2.29 mi)
- Last Second Saloon (2.4 mi)

Coffee Shops

- The Milady Coffeehouse (14.27 mi)
- Mocha C's (17.08 mi)
- Good Friends Café (16.99 mi)



Sam Heineman

Broker
Dodge County Realty Group

c: (402) 880-4864
e: sheineman@dodgecountyrealtygroup.com
w: www.dodgecountyrealtygroup.com

MAIN FLOOR

2941 Indian Peak Dr

**SIZES AND DIMENSIONS ARE APPROXIMATE.
ACTUAL MAY VARY.**



Sam Heineman

Broker

Dodge County Realty Group

c: (402) 880-4864

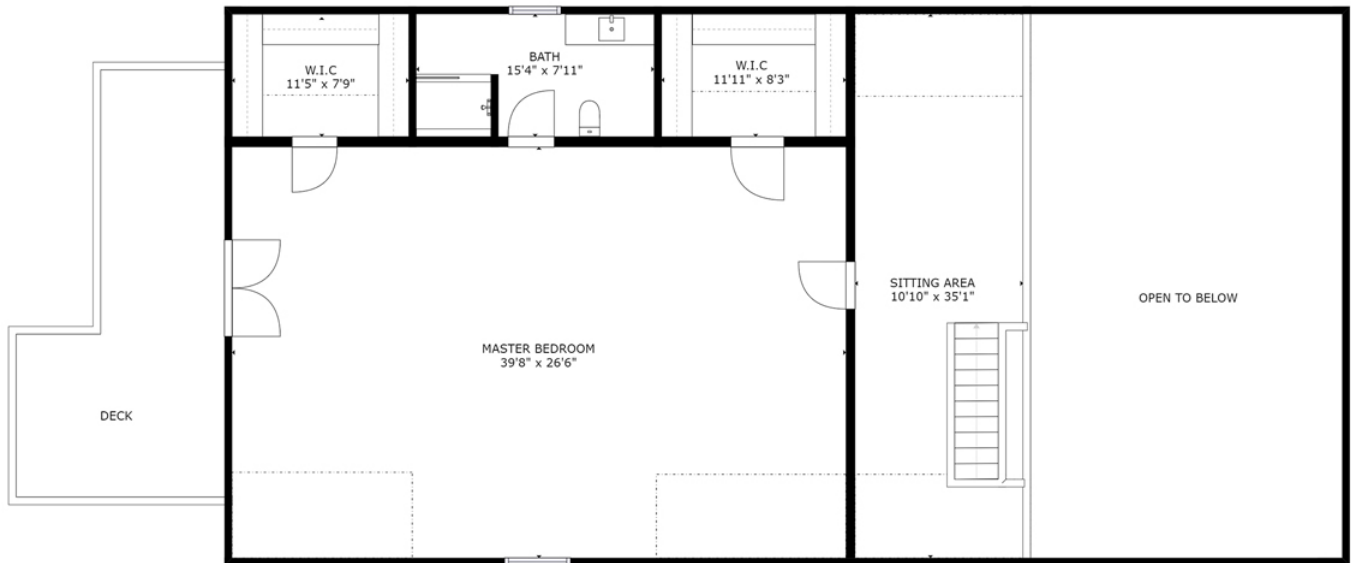
e: sheineman@dodgecountyrealtygroup.com

w: www.dodgecountyrealtygroup.com

FLOOR 2

2941 Indian Peak Dr

**SIZES AND DIMENSIONS ARE APPROXIMATE.
ACTUAL MAY VARY.**



Sam Heineman

Broker
Dodge County Realty Group

c: (402) 880-4864
e: sheineman@dodgecountyrealtygroup.com
w: www.dodgecountyrealtygroup.com