



11218 Ellison Ave
Omaha, NE 68164



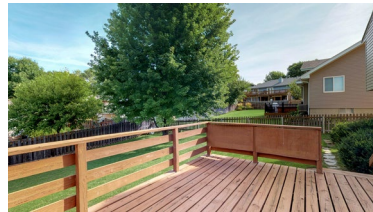
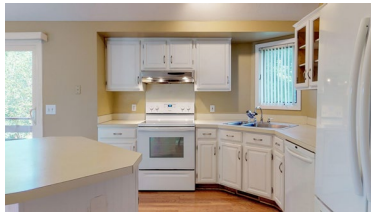
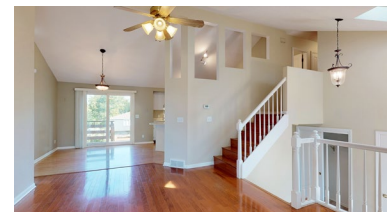
1,466 Sqft



3 bed, 2 bath



\$189,000



<https://realestate.lifestyle360vr.com/listings/11218-ellison-ave/>



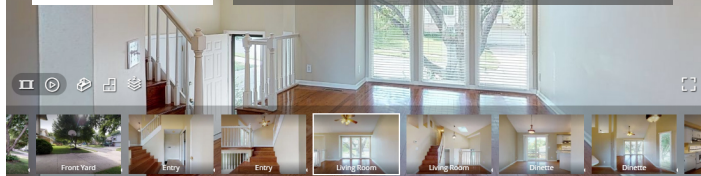
THIS HOME IS
ALWAYS OPEN ONLINE™
TAKE A VIRTUAL TOUR!



Scott Schaefer
Nebraska Realty



m: (402) 830-7113
e: scott@nebraskarealty.com
w: scottschaefer.lifestyle360vr.com




DESCRIPTION

This multi-level in Rambleridge is the perfect house to raise a family. Walking distance to Prairie Wind Elementary school and the sprawling Rambleridge park. Situated on a nice lot with mature trees. The house has wood floors, kitchen center island, large deck, large fenced back yard, and all appliances plus the washer and dryer are included. Schedule your showing today as this one won't last long.

PROPERTY FEATURES

- Cathedral Ceilings
- Double Closets in Master Bedroom
- Finished Basement
- Fireplace
- Fully-Fenced Back Yard
- Kitchen Island
- Lots of Kitchen Cabinets
- Pantry
- Tiered Deck
- Wood Floors
- Patio

powered by **yelp** **WHAT'S NEARBY?**

Education

- Omaha Public Schools
- Sunny Slope Elementary School (1.05 mi)
- Maplewood Pre School (1.8 mi)

Park

- Ramble Ridge Park (0.32 mi)
- Keystone Park (2.83 mi)
- Standing Bear Lake (1.87 mi)

Grocery

- Hy-Vee (0.21 mi)
- Family Fare Supermarket (1.74 mi)
- Trader Joe's (4.33 mi)

Restaurants

- Lombardo's Bistro & Bar (2.18 mi)
- Acadian Grille Scratch Kitchen (3.09 mi)
- Mangia Italiana (1.74 mi)

Coffee Shops

- Roast Coffee House (2.29 mi)
- Crane Coffee (2 mi)
- Karma Koffee (4.77 mi)



Scott Schaefer
Nebraska Realty



m: (402) 830-7113
e: scott@nebraskarealty.com
w: scottschaefer.lifestyle360vr.com