



605 Edwards St
Emerson, IA 51533



2,095 Sqft



3 bed, 2 bath



\$130,000



<https://realestate.lifestyle360vr.com/listings/605-edwards-st/>

**THIS HOME IS
ALWAYS OPEN ONLINE™
TAKE A VIRTUAL TOUR!**

Virtual tour interface showing a QR code and navigation controls. The main view displays an interior room with a bookshelf. Below the main view are several small thumbnail images labeled: Dohouse View, House Front, House Front, House Front, Front Yard, Front Walk, Front Walk, and Entry.



Teri & Sara Team
NEBRASKA Realty



Sara: (402) 917-2967
Teri: (402) 669-0545
e: teriandsara@nebraskarealty.com
w: www.teriandsara.com

DESCRIPTION

3 bedroom, 2 bathroom ranch with over 2,000 finished sqft. 2 car attached garage and walkout basement. Home sits on .4 acre lot and is perfect mix of small town living with quick access to highway. Eat-in kitchen with large pantry. This home has original wood floors under main floor living room and bedrooms! Majority of windows have been replaced. Already plumbed for washer and dryer on both main floor and basement levels.

PROPERTY FEATURES

- Appliances Included
- Central Air Cooling
- Fire Pit
- Forced Air Gas Heating
- Lighted Closets
- LL Daylight Windows
- Lots of Kitchen Cabinets
- Stainless Steel Sink
- Pantry
- Plenty of Storage
- Remote Control Ceiling Fans
- Walk-Out Basement

WHAT'S NEARBY?

Education

- East Mills Community School District (3.9 mi)
- Iowa Western Community College (27.03 mi)

Parks

- Mills County Freedom Rock (0.3 mi)
- Bass Memorial Park (1.1 mi)
- Viking Lake State Park (21.2 mi)

Grocery

- E-Stop (0.6 mi)
- Hy-Vee (8.86 mi)
- Fareway (8.92 mi)

Restaurants

- The New Feedlot Restaurant (9.6 mi)
- China Gate Express (9.5 mi)
- Buck Snort Red Oak (10 mi)

Coffee Shops

- The Bridge Coffeehouse (9.18 mi)
- Classic Café & Catering (9.5 mi)
- Rainbow Cafe (10.1 mi)



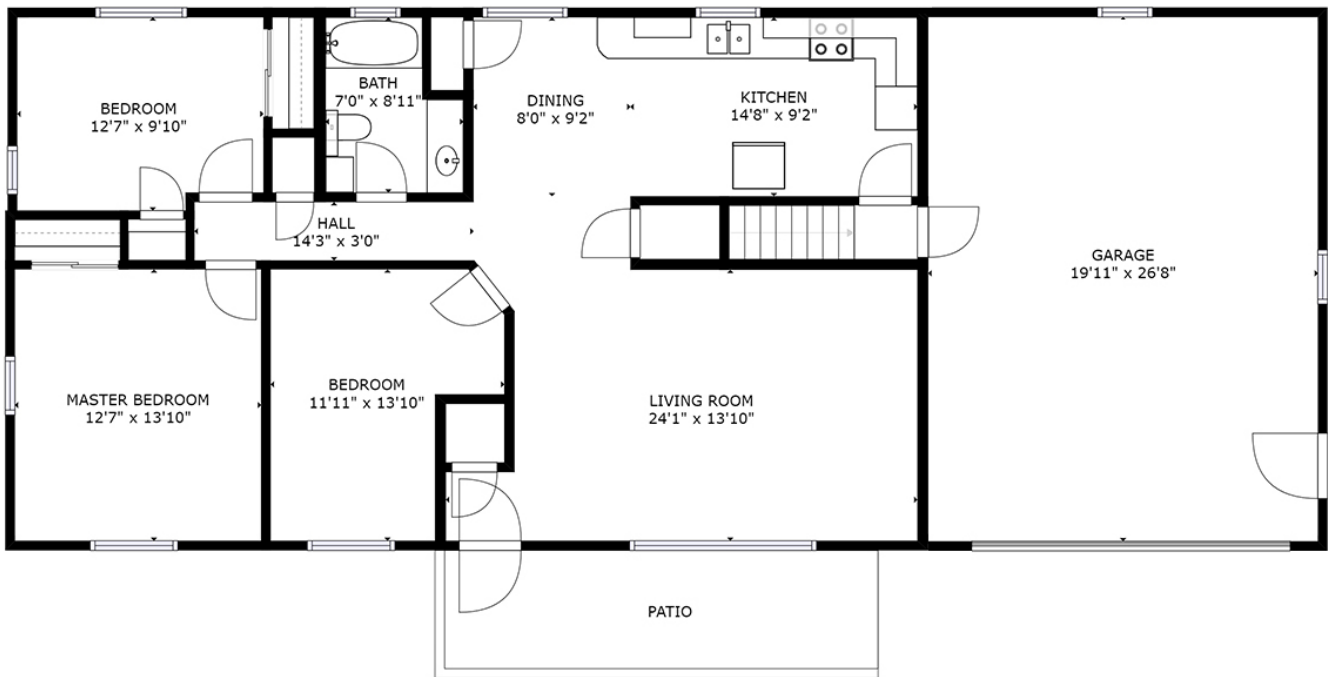
Teri & Sara Team
NEBRASKA Realty



Sara: (402) 917-2967
Teri: (402) 669-0545
e: teriandsara@nebraskarealty.com
w: www.teriandsara.com

MAIN FLOOR
605 EDWARDS ST

SIZES AND DIMENSIONS ARE APPROXIMATE.
ACTUAL MAY VARY.



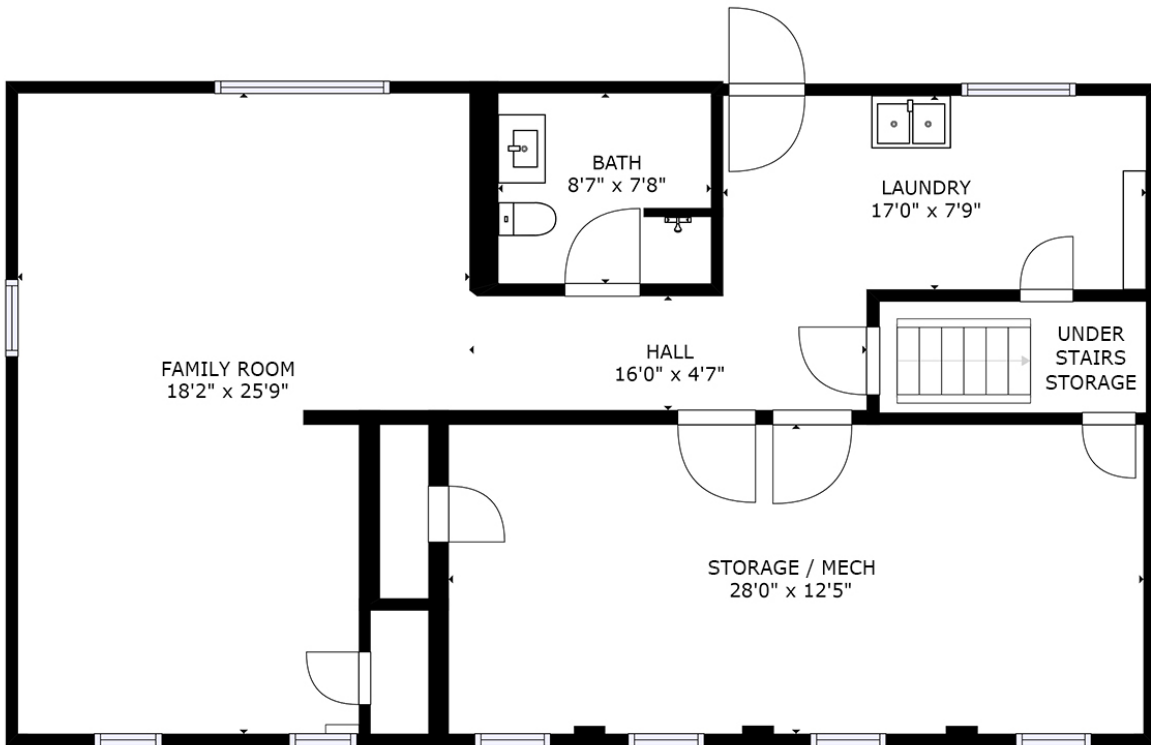
Teri & Sara Team
NEBRASKA Realty



Sara: (402) 917-2967
Teri: (402) 669-0545
e: teriandsara@nebraskarealty.com
w: www.teriandsara.com

LOWER LEVEL
605 EDWARDS ST

SIZES AND DIMENSIONS ARE APPROXIMATE.
ACTUAL MAY VARY.



Teri & Sara Team
NEBRASKA Realty



Sara: (402) 917-2967
Teri: (402) 669-0545
e: teriandsara@nebraskarealty.com
w: www.teriandsara.com