



BERKSHIRE HATHAWAY

HomeServices Ambassador Real Estate

Blondo Ridges Ranch Home



2115 N 188th Ave
Elkhorn, NE 68022



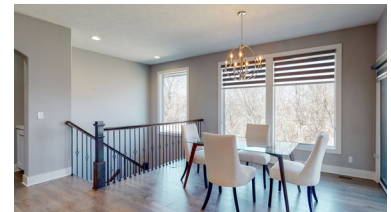
3,633 Sqft



6 bed, 3 bath



\$529,900



<https://realestate.lifestyle360vr.com/listings/2115-n-188th-ave/>



THIS HOME IS
ALWAYS OPEN ONLINE™
TAKE A VIRTUAL TOUR!



Don Fuller
Omaha Fuller Group
BHHS Ambassador Real Estate



c: (402) 677-8070
e: don@omahafullergroup.com
w: omahafullergroup.com



DESCRIPTION

Exquisitely designed, walk-out ranch home in Elkhorn, features a park-like private backyard & overlooks a gorgeous tree line. Over 3600 finished sqft with 6 beds & 3 baths, this home is perfect for entertaining. The lower level has a kitchenette, full bath, 3 additional bedrooms & walk-out to the backyard with covered deck & patio. The main floor embraces an open concept lifestyle appointed with designer finishes & 4 new solar tubes installed for natural light. Chef's kitchen features quartz counters, huge island & pantry, gas cooktop, built-in ovens, & stunning herringbone backsplash & accent wall. Master suite features 5-piece bath with dual sinks, walk-in shower, & whirlpool tub. Truly better than new, this 2 & 1/2-year-old home has had over fifty thousand in additional upgrades, including custom window treatments throughout, new landscaping, landscape lighting, wrought iron fence, state-of-the-art security, stunning wall treatments in the lower level & 2nd bedroom/office, and designer lighting.

PROPERTY FEATURES

- Chef's Kitchen w Walk in Pantry
- Designer Fixtures and Finishes
- Open Concept Floor Plan
- Walk out Basement
- Lots of Natural Light w Solar Tube Lighting
- Custom Window Blinds Throughout
- Hardwood Floors
- Beautiful, Lighted Landscaping
- Overlooks Tree Line
- Security System

WHAT'S NEARBY?

Convenience Stores

- Kwik Shop (1.41 mi)
- Casey's General Store (1.74 mi)
- Anderson Convenience Market (5.4 mi)

Park

- Lawrence Youngman Park (1 mi)
- Pepperwood Park (3.01 mi)
- Ta-Ha-Zouka Park (2.6 mi)

Grocery

- Rick's Meats (1.34 mi)
- Hy-Vee (1.34 mi)
- Family Fare Supermarket (3.6 mi)

Shopping

- The Shops of Olde Towne Elkhorn (2.2 mi)
- Village Pointe Shopping Center (1.8 mi)
- Oak View Mall (5.17 mi)

Restaurants

- Jukes Ale Works (1.52 mi)
- Saltgrass Steak House (1.58 mi)
- Sea Thai (2.3 mi)

Coffee Shops

- Fala's Treasures & Coffee House (1.43 mi)
- Karma Koffee (2.88 mi)
- Whisk + Measure Specialty Bakery and Coffee



Don Fuller

Omaha Fuller Group
BHHS Ambassador Real Estate

c: (402) 677-8070
e: don@omahafullergroup.com
w: omahafullergroup.com

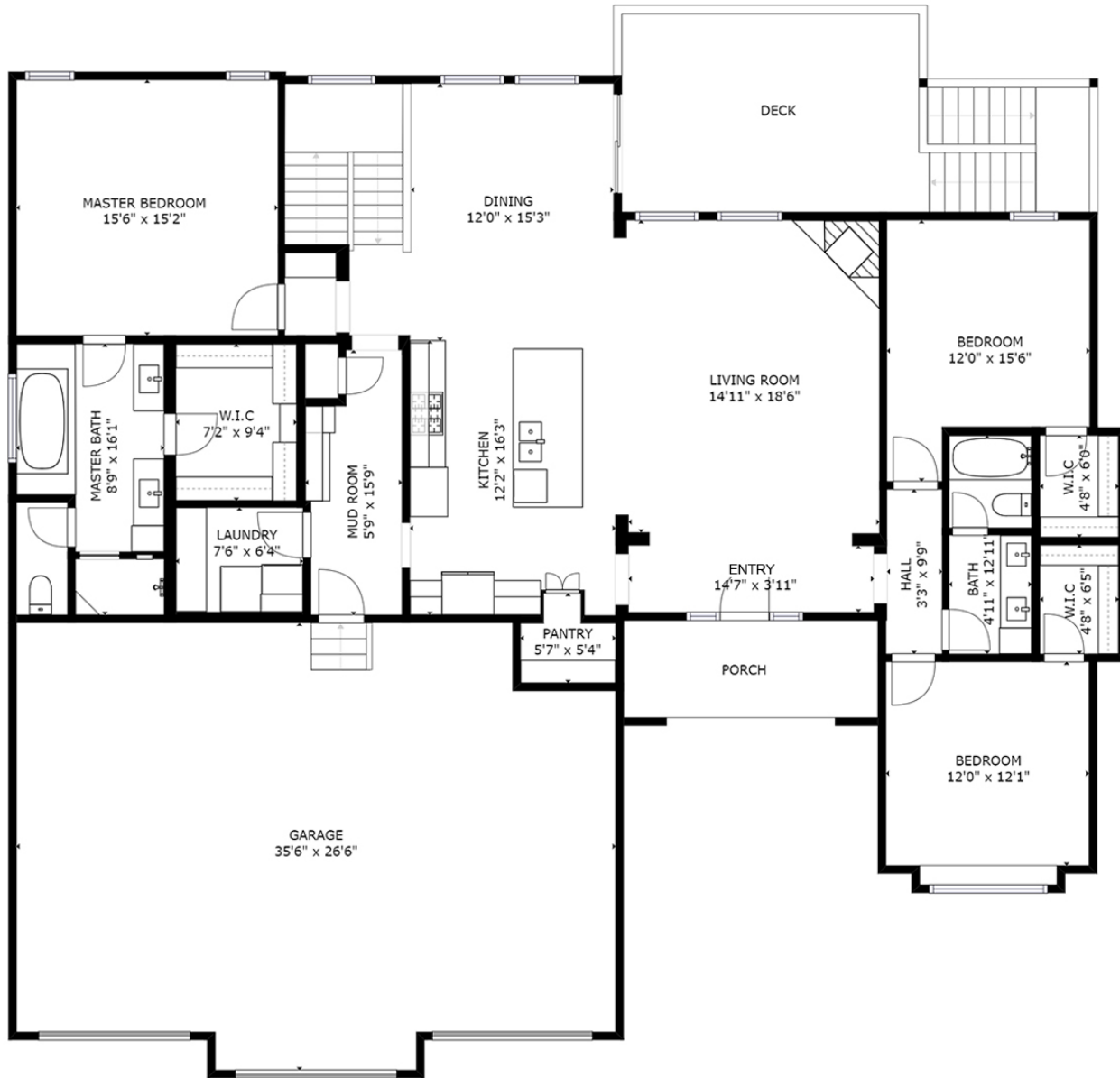




MAIN FLOOR

2115 N 188th Ave

SIZES AND DIMENSIONS ARE APPROXIMATE.
ACTUAL MAY VARY.



Don Fuller
Omaha Fuller Group
BHHS Ambassador Real Estate



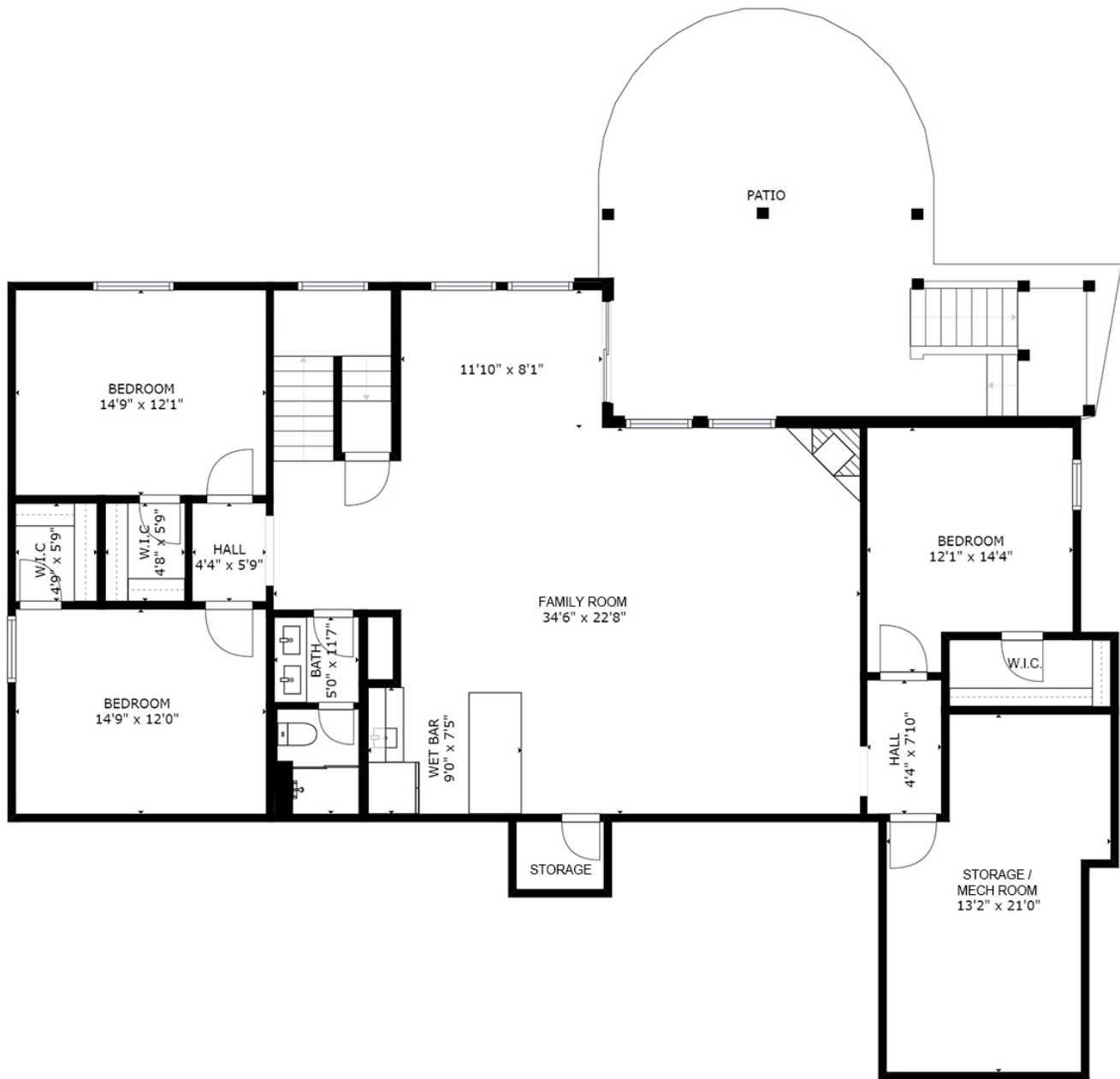
c: (402) 677-8070
e: don@omahafullergroup.com
w: omahafullergroup.com



LOWER LEVEL

2115 N 188th Ave

SIZES AND DIMENSIONS ARE APPROXIMATE.
ACTUAL MAY VARY.



Don Fuller
Omaha Fuller Group
BHHS Ambassador Real Estate



c: (402) 677-8070
e: don@omahafullergroup.com
w: omahafullergroup.com