



Cindy Hall

c: (402) 210-1814

e: [chall@dodgecountyrealtygroup.com](mailto:chall@dodgecountyrealtygroup.com)

w: [dodgecountyrealtygroup.com](http://dodgecountyrealtygroup.com)

 **DODGE**  
— COUNTY REALTY GROUP —

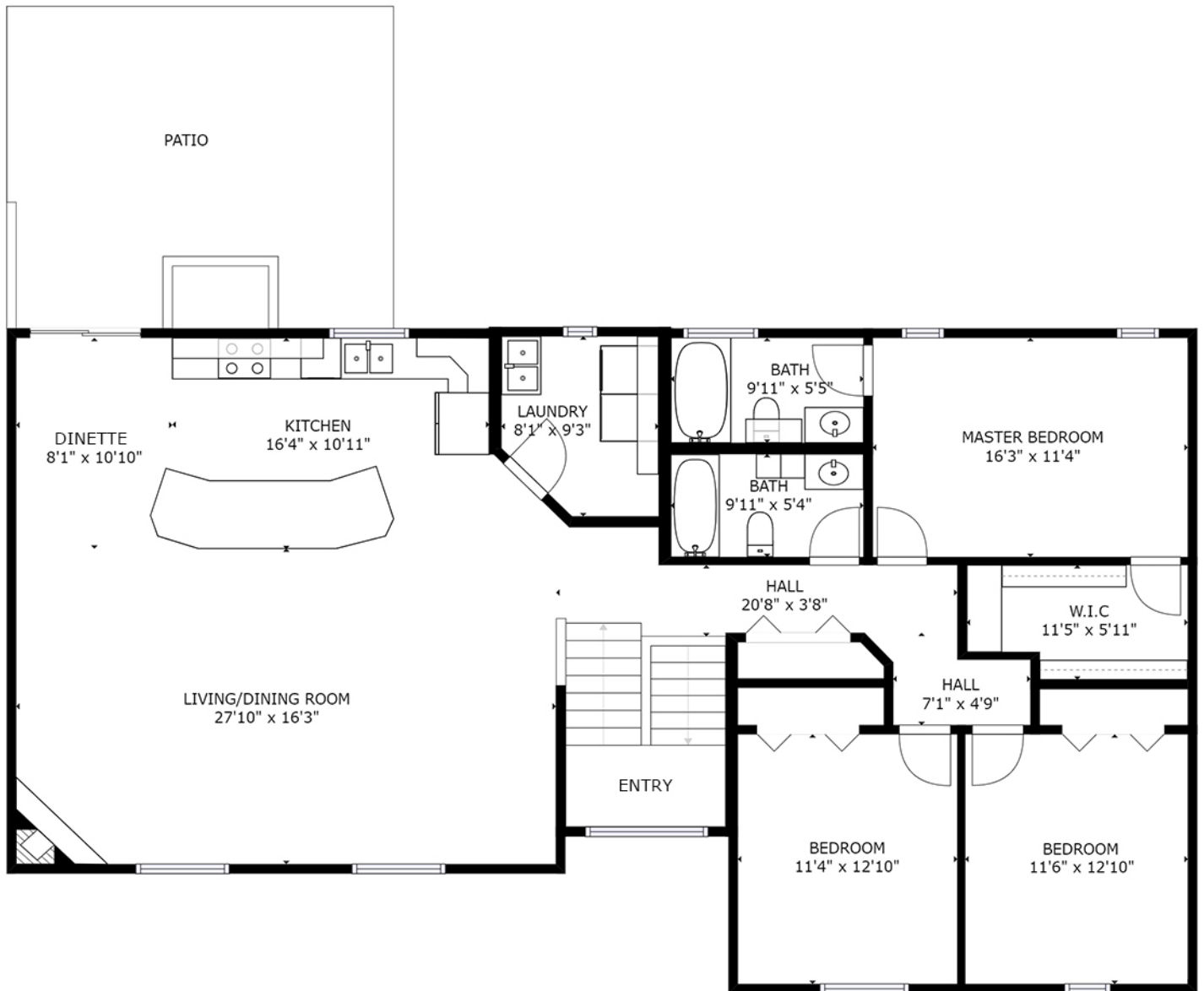


2713 EAGLE DRIVE

# MAIN FLOOR

2713 EAGLE DR

SIZES AND DIMENSIONS ARE APPROXIMATE. ACTUAL MAY VARY.



**Cindy Hall**

c: (402) 210-1814

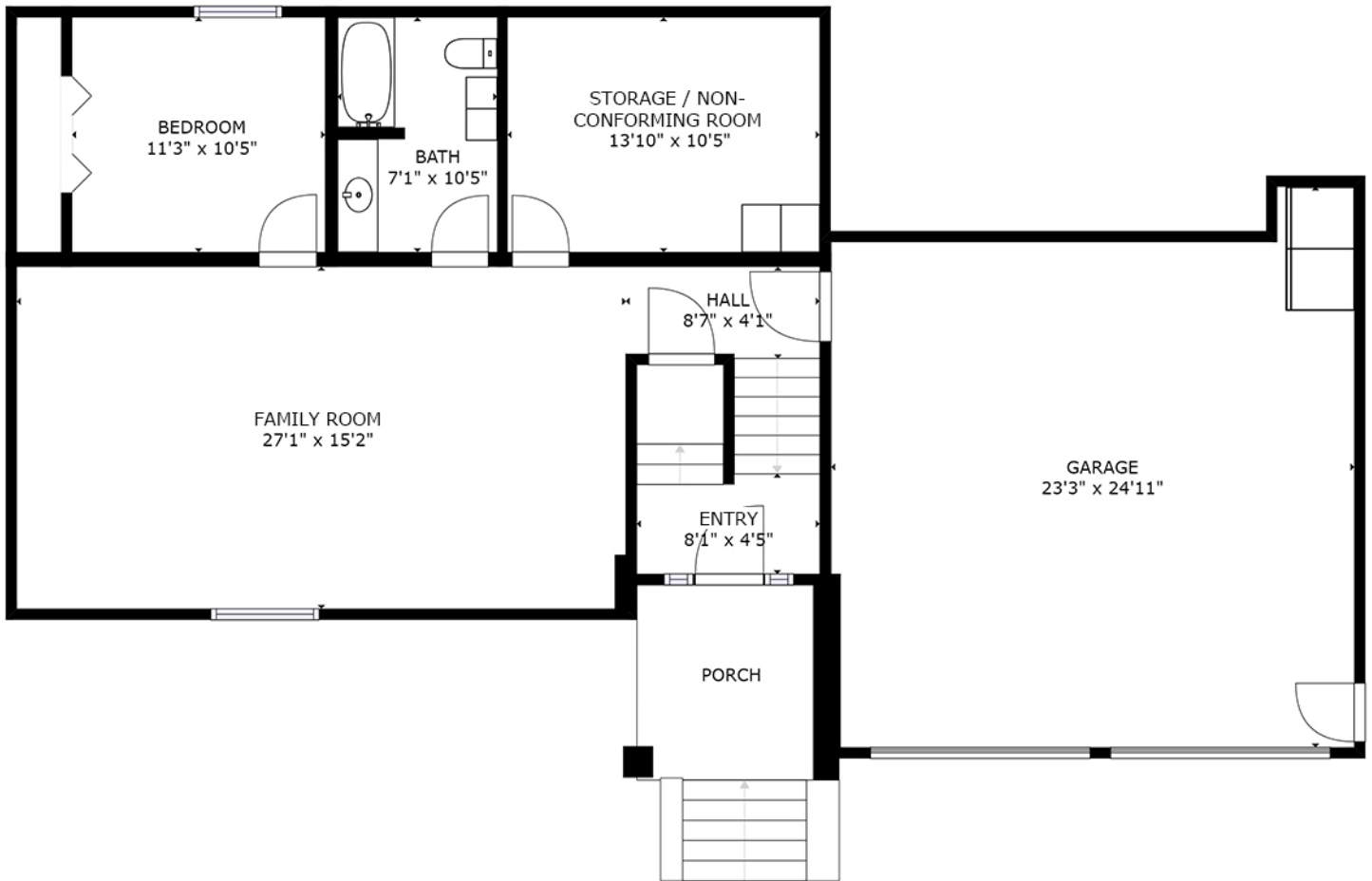
e: [chall@dodgecountyrealtygroup.com](mailto:chall@dodgecountyrealtygroup.com)

w: [dodgecountyrealtygroup.com](http://dodgecountyrealtygroup.com)

# LOWER LEVEL

2713 EAGLE DR

SIZES AND DIMENSIONS ARE APPROXIMATE. ACTUAL MAY VARY.



**Cindy Hall**

c: (402) 210-1814

e: [chall@dodgecountyrealtygroup.com](mailto:chall@dodgecountyrealtygroup.com)

w: [dodgecountyrealtygroup.com](http://dodgecountyrealtygroup.com)