



**2713 Eagle Dr
Fremont, NE 68025**



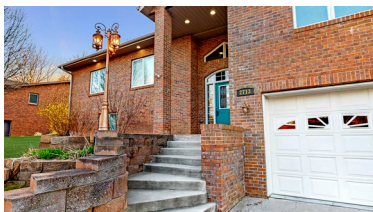
3,227 Sqft



4 bed, 3 bath



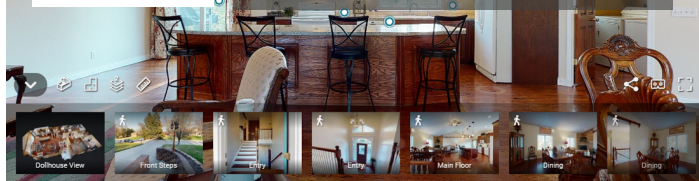
\$299,000



<https://realestate.lifestyle360vr.com/listings/2713-eagle-dr/>



**THIS HOME IS
ALWAYS OPEN ONLINE™
TAKE A VIRTUAL TOUR!**



Cindy Hall
Realtor®, SRES®
Dodge County Realty Group

c: (402) 210-1814
e: chall@dodgecountyrealtygroup.com
w: dodgecountyrealtygroup.com

DESCRIPTION

Do you love to golf? Rare opportunity to own a custom-built home on Valley View golf course. Beautiful open floor plan with a stunning entry and a convenient central kitchen featuring abundant counter and island space. Plenty of sitting area for formal dining and living room. This home offers 4 bedrooms with 1 non-conforming room in the lower level along with a large family room and full bath. Over-sized 2 car garage with extra storage everywhere! PS - You'll love the main floor laundry room. HoA includes maintenance of roads, water, & sewer. AMA

PROPERTY FEATURES

- 14' Tall Covered Porch
- Central Kitchen with Large Island
- Custom-Built Home on Golf Course
- Floor to Ceiling Stone Gas Fireplace
- Open Floor Plan
- Plenty of Cabinet and Counter Space
- Formal Dining and Living Room
- HoA Provides Lawn Care and Snow Removal

WHAT'S NEARBY?

Shopping

- Fremont Business District (3.5 mi)
- Village Pointe Shopping Center (19.16 mi)
- Nebraska Crossing Outlets (24.44 mi)

Convenience Stores

- Shell Station (2 mi)
- Casey's General Store (2.4 mi)
- Sinclair (2.8 mi)

Parks

- Luther Hormel Memorial Park (2.8 mi)
- Fremont State Recreation Area (5.21 mi)
- John C. Fremont City Park (3.6 mi)

Grocery

- Baker's (3.53 mi)
- Hy-Vee (4.13 mi)
- Walmart Supercenter (4.74 mi)

Restaurants

- The Woodcliff Restaurant (1.68 mi)
- J's Steakhouse (2.68 mi)
- DJ's Bar & Grill (2.25 mi)

Coffee Shops

- Blue Bottle Coffeehouse, Inc. (2.77 mi)
- The Milady Coffeehouse (2.77 mi)
- Starbucks (4.12 mi)



Cindy Hall

Realtor®, SRES®

Dodge County Realty Group

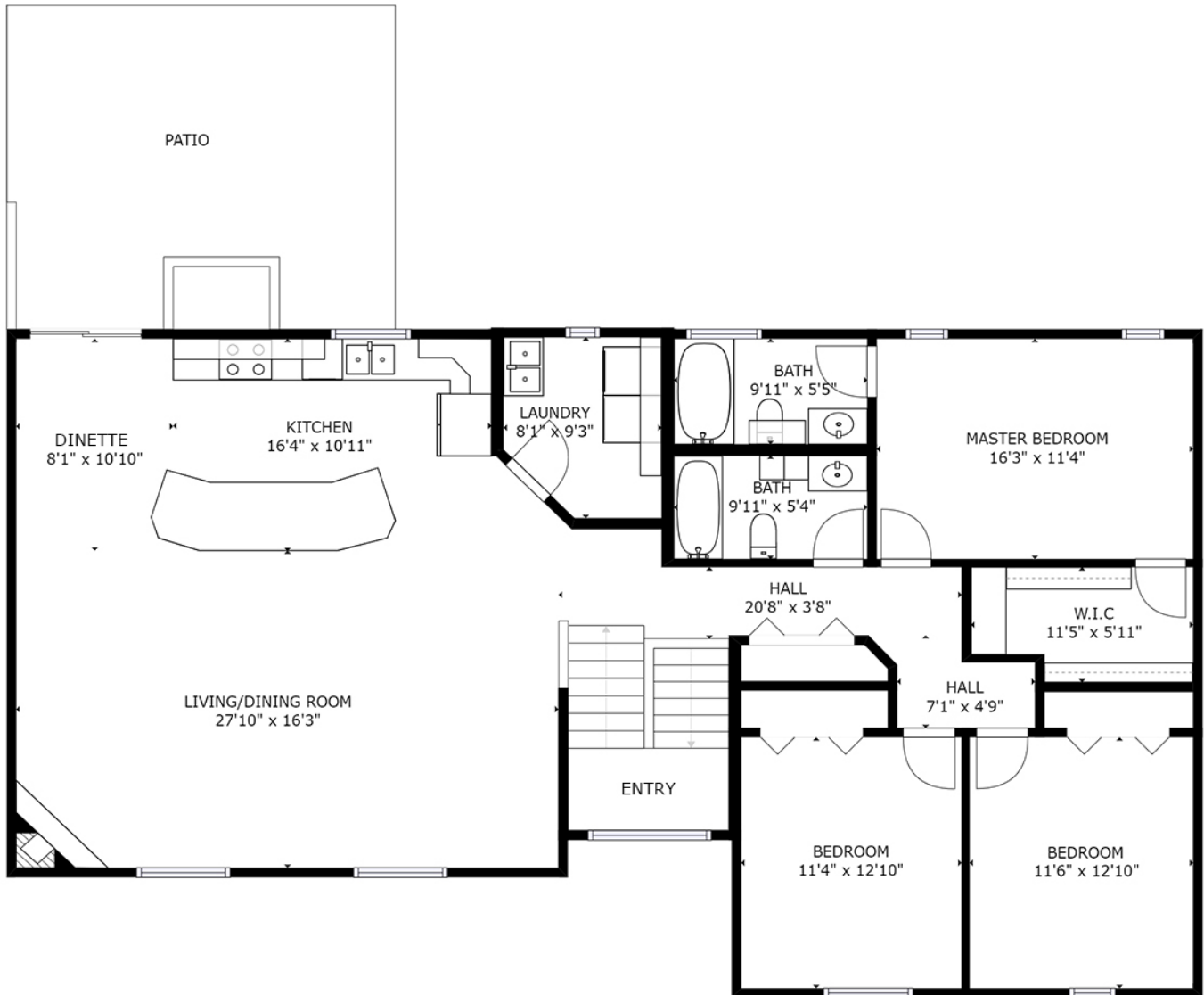
c: (402) 210-1814

e: chall@dodgecountyrealtygroup.com

w: dodgecountyrealtygroup.com

MAIN FLOOR
2713 EAGLE DR

SIZES AND DIMENSIONS ARE APPROXIMATE.
ACTUAL MAY VARY.



Cindy Hall

Realtor®, SRES®

Dodge County Realty Group

c: (402) 210-1814

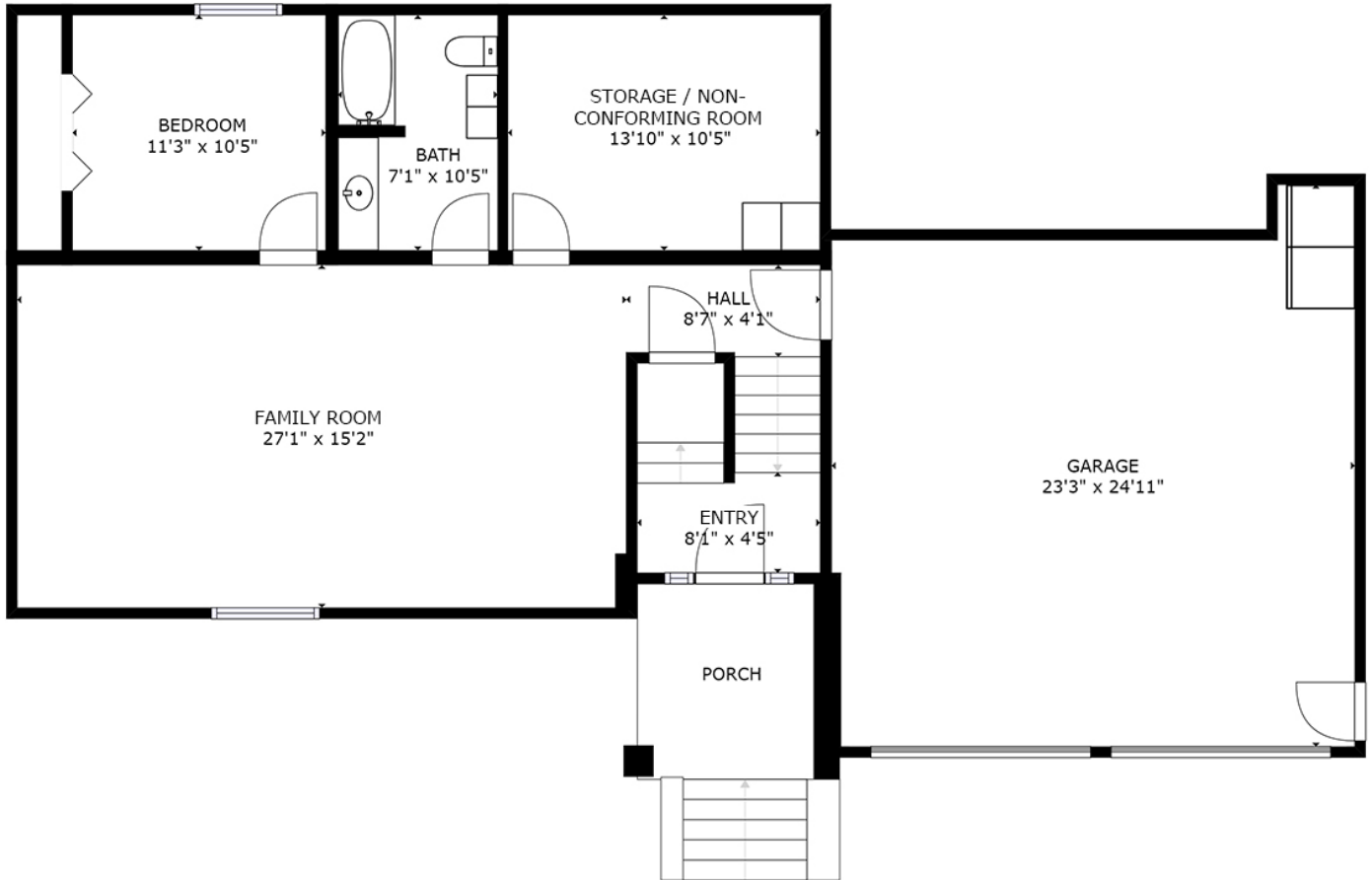
e: chall@dodgecountyrealtygroup.com

w: dodgecountyrealtygroup.com

LOWER LEVEL

2713 EAGLE DR

**SIZES AND DIMENSIONS ARE APPROXIMATE.
ACTUAL MAY VARY.**



Cindy Hall

Realtor®, SRES®

Dodge County Realty Group

c: (402) 210-1814

e: chall@dodgecountyrealtygroup.com

w: dodgecountyrealtygroup.com