



1125 Applewood Dr
Fremont, NE 68025



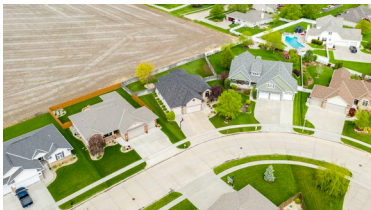
3,024 Sqft



5 bed, 3 bath



\$385,000



<https://realestate.lifestyle360vr.com/listings/1125-applewood-dr/>



THIS HOME IS
ALWAYS OPEN ONLINE™
TAKE A VIRTUAL TOUR!



Sam Heineman

Broker

Dodge County Realty Group

o: (402) 719-9269

e: sheineman@dodgecountyrealtygroup.com

w: www.dodgecountyrealtygroup.com

DESCRIPTION

This home has it all! This 5 bedroom, 3 bathroom, 3 car garage, ranch style home is located in the desirable Day Acres East 3rd Addition. The main floor features an open kitchen, dining, living room concept with a large covered deck perfect for entertaining friends and family! There are 3 bedrooms on the main floor including a spacious master suite featuring an en-suite bathroom and walk-in closet. Main floor laundry! The basement has two bedrooms, a kitchenette, family room with fireplace, and plenty of storage! The home has many upgrades throughout including hardwood floors, granite countertops, stainless steel appliances, multiple fireplaces, and a roof that is 2 years old!

PROPERTY FEATURES

- Ceiling Speakers for Audio/Video
- Engineered Wood Floors
- Floor-to-Ceiling Stone Electric Fireplace
- Granite Countertops
- Large Covered Deck
- Outdoor Speakers
- Stainless Steel Appliances
- Stainless Steel Sink
- Tile Floors in Mud Room and Bathrooms
- Tile Electric Fireplace
- Walk-In Pantry
- Wet Bar

WHAT'S NEARBY?

Grocery

- Hy-Vee (1.73 mi)
- Baker's (1.4 mi)
- Walmart Supercenter (0.9 mi)

Shopping

- Westroads Mall (23.52 mi)
- Village Pointe Shopping Center (18.87 mi)
- Oak View Mall (22.25 mi)

Restaurants

- The Woodcliff Restaurant (4.12 mi)
- Taco Smack (0.92 mi)
- Huey's Smokehouse BBQ (1.44 mi)

Coffee Shops

- The Milady Coffeehouse (2.03 mi)
- Blue Bottle Coffeehouse (1.99 mi)
- Starbucks (1.73 mi)

Parks

- Ruff House (0.97 mi)
- Fremont State Recreation Area (6.02 mi)
- Black Elk-Neihardt Park (17.26 mi)



Sam Heineman

Broker

Dodge County Realty Group

o: (402) 719-9269

e: sheineman@dodgecountyrealtygroup.com

w: www.dodgecountyrealtygroup.com

FLOOR PLAN

1125 APPLEWOOD DR

**SIZES AND DIMENSIONS ARE APPROXIMATE.
ACTUAL MAY VARY.**



Sam Heineman
Broker
Dodge County Realty Group

o: (402) 719-9269
e: sheineman@dodgecountyrealtygroup.com
w: www.dodgecountyrealtygroup.com