



1641 N Garden City Rd
Fremont, NE 68025



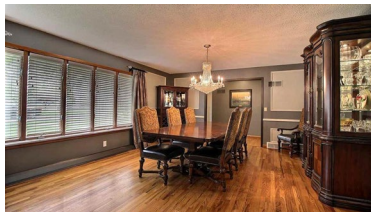
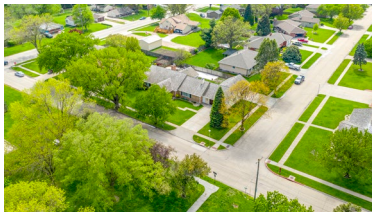
2,967 Sqft



3 bed, 4 bath



\$345,000



<https://realestate.lifestyle360vr.com/listings/1641-n-garden-city-rd/>



THIS HOME IS
ALWAYS OPEN ONLINE™
TAKE A VIRTUAL TOUR!



Sam Heineman
Broker
Dodge County Realty Group

o: (402) 719-9269
e: sheineman@dodgecountyrealtygroup.com
w: www.dodgecountyrealtygroup.com

DESCRIPTION

Don't miss this updated 3 bedroom, 4 bathroom, 4 car garage ranch style home located next to Clemmons Park with almost 3,000 SF on the main floor. The main floor features an updated kitchen with stainless steel appliances, an open living room, sunroom, 3 spacious bedrooms including a large master bedroom with en-suite master bathroom, 4 bathrooms in total, and a bonus room with a separate entrance. The basement has a large rec room and plenty of storage space. The 4 car garage is a must see! The property sits on a large corner lot with 0.37 acres right across the street from Clemmons Park and just blocks from an elementary school and high school. The back yard has a deck, patio, fire pit, and corn hole concrete pad perfect for entertaining friends and family.

PROPERTY FEATURES

- Cedar Closet
- Corian Countertops and Stone Sink
- Fire Pit
- Floor-to-Ceiling Brick Fireplace
- Large Center Island with Granite Countertop
- Large Deck and Patio
- Wood Floors in Dining and Hall
- Outdoor Speakers
- Ramp Access in Garage
- Stainless Steel Appliances
- Sunroom with Wall-to-Wall Windows
- Tile Floors in Kitchen and Bathrooms
- Walk-In Tile Master Shower

WHAT'S NEARBY?

Grocery

- Hy-Vee (1.2 mi)
- Walmart Supercenter (0.7 mi)
- Baker's (0.97 mi)

Shopping

- Westroads Mall (24.06 mi)
- Village Pointe Shopping Center (19.41 mi)
- Oak View Mall (22.79 mi)

Restaurants

- Huey's Smokehouse BBQ (0.92)
- The Woodcliff Restaurant (4.38 mi)
- Pepper Grinder (1.68 mi)

Coffee Shops

- The Milady Coffeehouse (1.74 mi)
- Blue Bottle Coffeehouse (1.71 mi)
- Mac's Café (0.89 mi)

Parks

- Fremont State Recreation Area (5.58 mi)
- Ruff House (0.5 mi)
- Zorinsky Lake & Recreation Area (22.3 mi)



Sam Heineman

Broker

Dodge County Realty Group

o: (402) 719-9269

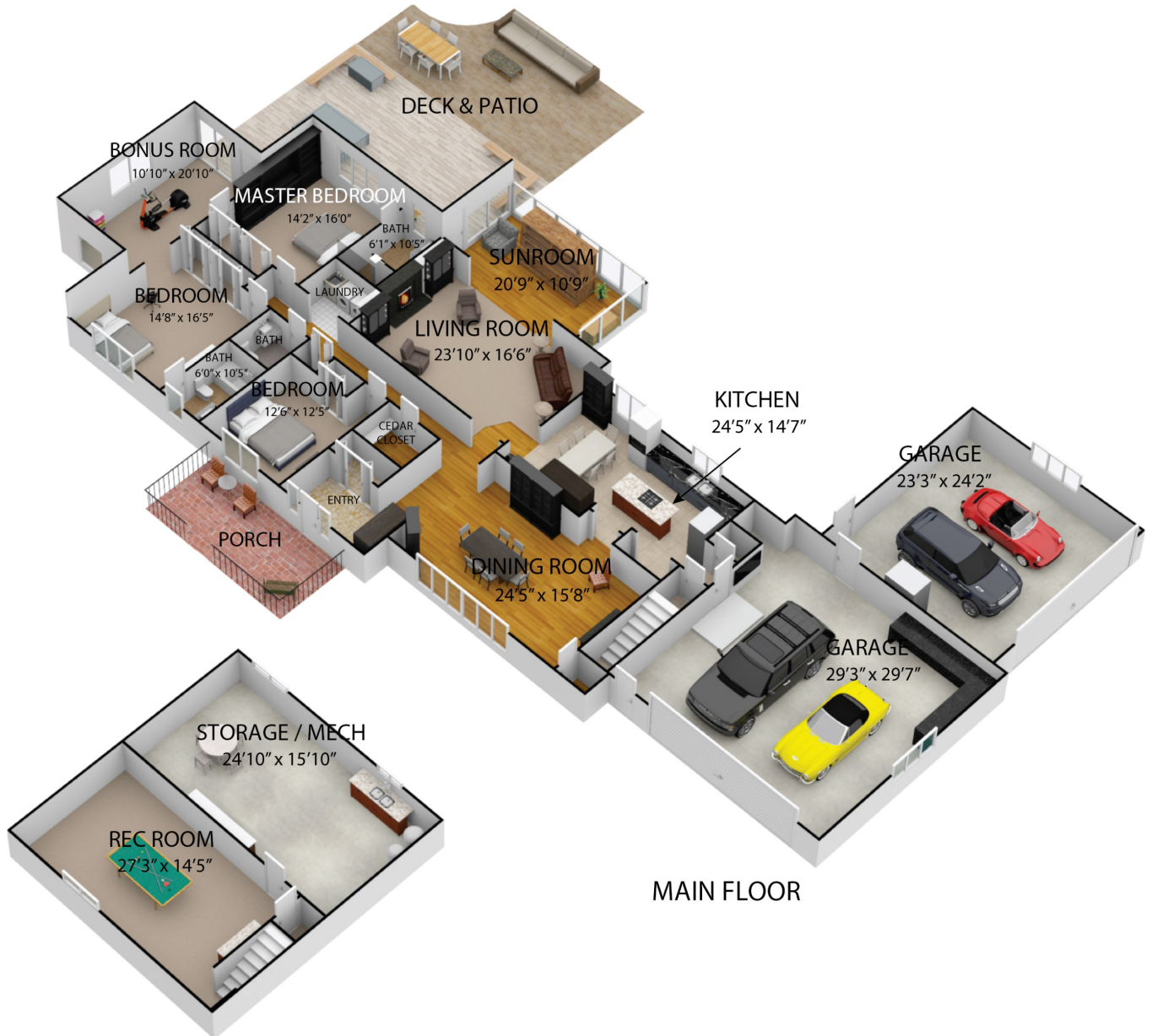
e: sheineman@dodgecountyrealtygroup.com

w: www.dodgecountyrealtygroup.com

FLOOR PLAN

1641 N GARDEN CITY RD

**SIZES AND DIMENSIONS ARE APPROXIMATE.
ACTUAL MAY VARY.**



Sam Heineman
Broker
Dodge County Realty Group

o: (402) 719-9269
e: sheineman@dodgecountyrealtygroup.com
w: www.dodgecountyrealtygroup.com