



BERKSHIRE  
HATHAWAY

HomeServices  
Ambassador Real Estate

Summer Hill Farm Ranch Home



7724 N 166th St  
Bennington, NE 68007



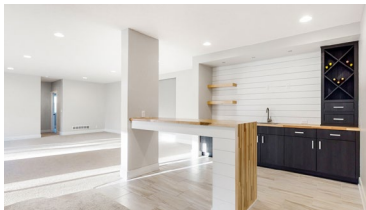
3,431 Sqft



6 bed, 3 bath



\$485,000



<https://realestate.lifestyle360vr.com/listings/7724-n-166th-st/>



THIS HOME IS  
*ALWAYS OPEN ONLINE™*  
TAKE A VIRTUAL TOUR!



**Chelsea Nelson**  
BHHS Ambassador Real Estate



c: 402-657-8905  
e: chelsea.nelson@bhhsamb.com  
w: chelseanelson.lifestyle360vr.com



## DESCRIPTION

---

Echelon Homes' Sydney modern farmhouse floor plan features a stunning vaulted ceiling in the great room, complete with white cedar accent beams. Cambria quartz countertops, custom cabinetry, and woodwork are showcased throughout the home. Enjoy cooking in this expansive kitchen with gas cooktop and large island and a walk-in pantry. LED accent lighting in the kitchen and basement rec area provides ambiance when entertaining. The spacious master bedroom features a walk-in closet, and the master bathroom will wow you with its large tiled shower. A drop zone area and laundry room are great bonuses. Basement bar features butcher's block countertop and shelving. The covered deck awaits for you to unwind after a long day on this private lot that backs up to trees with no rear neighbors.

## PROPERTY FEATURES

---

- 15' Vaulted Great Room Ceiling
- Backs to Trees
- Bennington Public Schools
- Cambria Quartz Countertops
- Covered Deck and Patio
- Custom Woodwork and Cabinetry
- LED Accent Lighting
- Walk-In Pantry
- Wet Bar
- Drop Zone
- Engineered Wood Floors
- Gas Cooktop
- Gas Fireplace
- High-End Fixtures
- His-and-Hers Vanities
- Stainless Steel Appliances
- Walk-In Tile Master Shower
- White Cedar Accent Beams

## WHAT'S NEARBY?

---

### Grocery

- Hy-Vee (2.39 mi)
- Rick's Meats (4.1 mi)
- Mint Masala Groceries (5.36 mi)

### Shopping

- Village Pointe Shopping Center (4.34 mi)
- One Pacific Place Shopping Center (7.3 mi)
- Regency Court Shopping & Dining (6.87 mi)

### Restaurants

- Pacific Eating House (6.1 mi)
- Porky Butts BBQ (2.13 mi)
- Saltgrass Steak House (4.29 mi)

### Coffee Shops

- Karma Koffee (4.06 mi)
- Roast Coffee House (5.3 mi)
- Fala's Treasures & Coffee House (4.28 mi)

### Parks

- Pepperwood Park (3.66 mi)
- Standing Bear Lake (2.85 mi)
- OPPD Arboretum (5.82 mi)



**Chelsea Nelson**  
BHHS Ambassador Real Estate

c: 402-657-8905  
e: chelsea.nelson@bhhsamb.com  
w: chelseanelson.lifestyle360vr.com

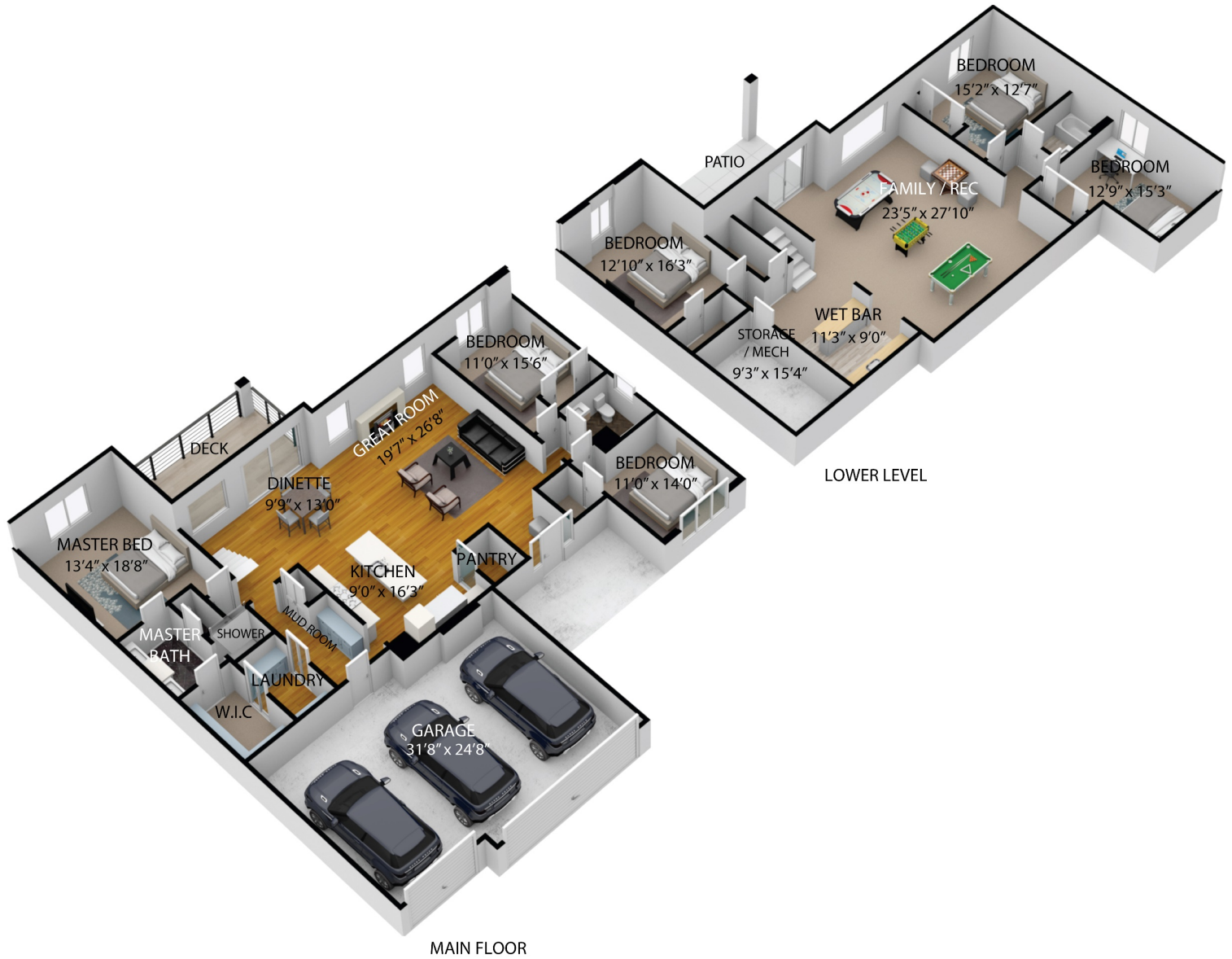




# FLOOR PLAN

7724 N 166<sup>th</sup> St

SIZES AND DIMENSIONS ARE APPROXIMATE.  
ACTUAL MAY VARY.



**Chelsea Nelson**  
BHHS Ambassador Real Estate



c: 402-657-8905  
e: chelsea.nelson@bhhsamb.com  
w: chelseanelson.lifestyle360vr.com