



BERKSHIRE  
HATHAWAY

HomeServices  
Ambassador Real Estate

Florence 1.5 Story Home



8011 N 30<sup>th</sup> St  
Omaha, NE 68112



1,315 Sqft



3 bed, 2 bath



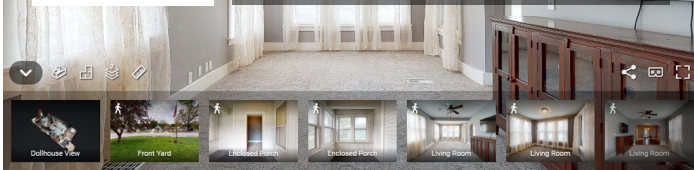
\$125,000



<https://realestate.lifestyle360vr.com/listings/8011-n-30th-st/>



THIS HOME IS  
**ALWAYS OPEN ONLINE™**  
TAKE A VIRTUAL TOUR!



**Muriel Burke**

BHHS Ambassador Real Estate  
Realtor®, One80 Group

c: 402-216-3994

e: [muriel.burke@bhhsamb.com](mailto:muriel.burke@bhhsamb.com)

w: [one80omaha.com](http://one80omaha.com)





## Description

---

This adorable home located in the heart of Florence is waiting for you! This 3 bed, 2 bath home has been updated beautifully while still maintaining all of the original charming details. Featuring new carpet, fresh paint throughout, updated kitchen and baths, new vinyl siding, updated plumbing - the list goes on! And to top it off, it comes with THREE garage spaces. Convenient location close to shopping, restaurants, walking/bike trails, and easy interstate access - minutes to downtown Omaha.

## Property Features

---

- Ample Cabinet Space
- Completely Updated Throughout
- Convenient Interstate Access
- Enclosed Porch
- Fenced Back Yard
- Floor-to-Ceiling Windows
- Large Attic
- New Paint and Siding
- Tall, Open Kitchen
- Updated Plumbing
- Wood Floors

## What's Nearby?

---

### Grocery

- Hy-Vee (0.27 mi)
- Baker's (0.47 mi)
- Stick & Stone Brick Oven Bakery (1.02 mi)

### Shopping

- Crossroads Mall (6.05 mi)
- Omaha Old Market (6.7 mi)
- Midtown Crossing (5.9 mi)

### Restaurants

- Best Burger (0.21 mi)
- Finicky Franks (1.02 mi)
- Tussey's Casual Grill (1.55 mi)

### Coffee Shops

- Cups Café at Florence (0.31 mi)
- Harold's Koffee House (0.22 mi)
- Food Hub (0.33 mi)

### Parks

- Hummel Park Nature Center (2.79 mi)
- Heartland of America Park (5.38 mi)
- River's Edge Park (5.3 mi)



### Muriel Burke

BHHS Ambassador Real Estate  
Realtor®, One80 Group

c: 402-216-3994

e: [muriel.burke@bhhsamb.com](mailto:muriel.burke@bhhsamb.com)

w: [one80omaha.com](http://one80omaha.com)

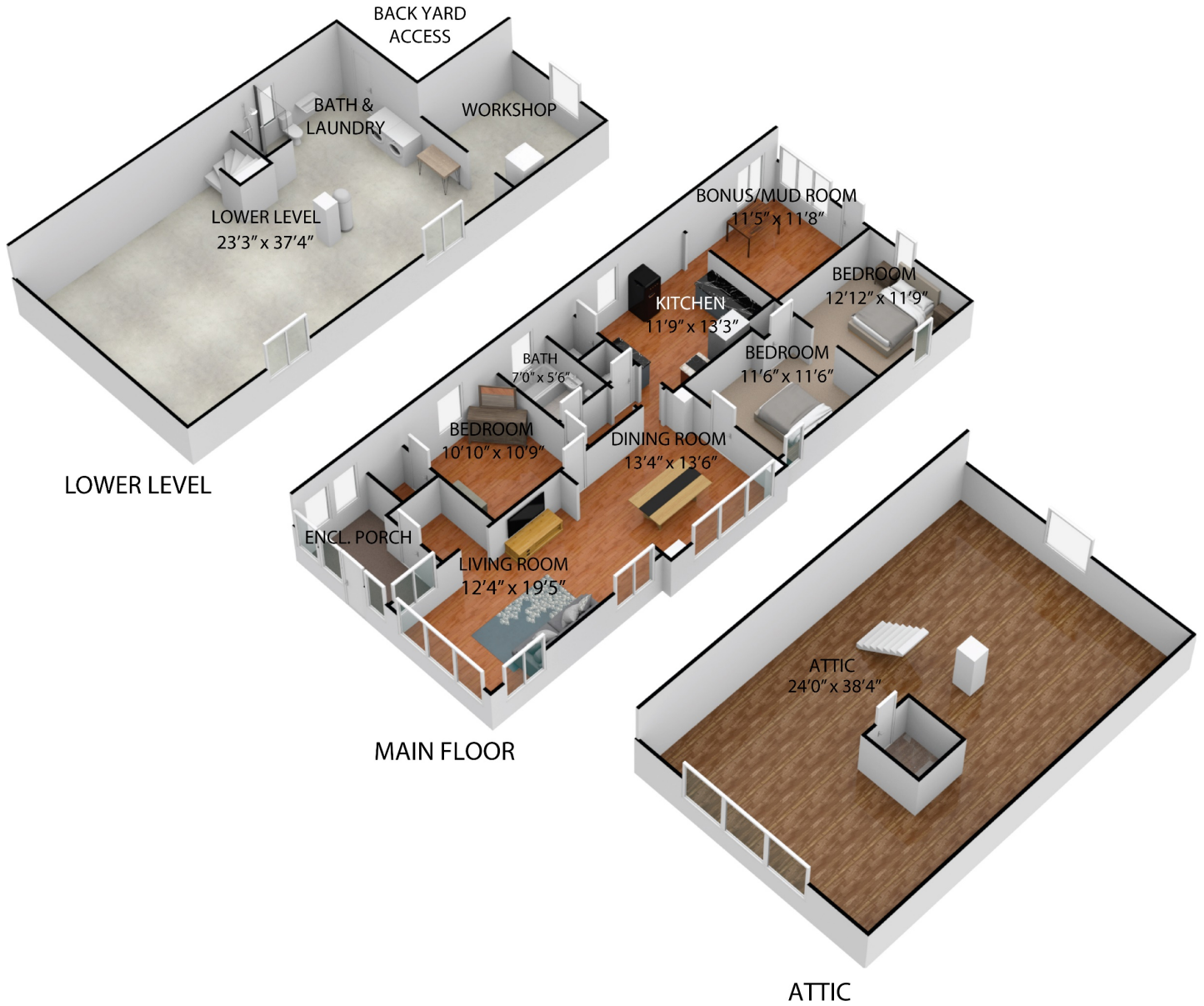




# FLOOR PLAN

8011 N 30<sup>th</sup> St

SIZES AND DIMENSIONS ARE APPROXIMATE.  
ACTUAL MAY VARY.



**Muriel Burke**

BHHS Ambassador Real Estate  
Realtor®, One80 Group

c: 402-216-3994

e: [muriel.burke@bhhsamb.com](mailto:muriel.burke@bhhsamb.com)

w: [one80omaha.com](http://one80omaha.com)

