



**14209 Poppleton Cir
Omaha, NE 68144**



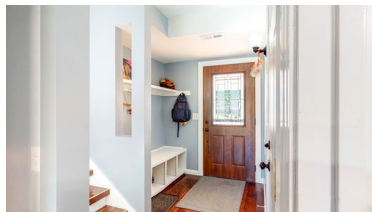
2,286 Sqft



4 bed, 3 bath



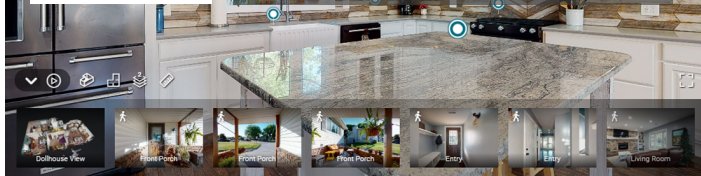
\$275,000



<https://realestate.lifestyle360vr.com/listings/14209-poppleton-cir/>



**THIS HOME IS
ALWAYS OPEN ONLINE™
TAKE A VIRTUAL TOUR!**



**Teri & Sara Team
NEBRASKA Realty**



**Sara: (402) 917-2967
Teri: (402) 669-0545
e: teriandsara@nebraskarealty.com
w: www.teriandsara.com**

DESCRIPTION

Very well cared for & newly updated inside & out. This home has only had 2 owners. Permanent siding, newer windows, driveway, & patio. Furnace & Air only 1 year old. Complete kitchen remodel within the last 3 years includes center island, walk-in pantry, farmhouse sink, bay window, gas stove, convection oven, granite, quartz, & all different size drawers with self-closure. Bathrooms have been updated within the last year. Hardwood 3/4 inch hickory floors on entire main floor and 2nd floor hallway. *Kitchen appliances are black stainless steel Kitchen Aid. This home flows effortlessly throughout for large or small gatherings. You won't be disappointed! Located near parks, schools, bus line, and shopping.

PROPERTY FEATURES

- Black Stainless Steel Appliances
- Covered Porch
- Drop-Zone
- Floor-to-Ceiling Brick Fireplace
- Large Patio
- Remodeled Kitchen
- Updated Throughout
- Walk-In Pantry
- Wood Floors throughout Main Floor
- Millard Public Schools

WHAT'S NEARBY?

Grocery

- Hy-Vee (1.71 mi)
- Tulsi Indian Groceries (1.13 mi)
- Fresh Thyme Farmer's Market (1.22 mi)

Shopping

- Westroads Mall (3.83 mi)
- Oak View Mall (1.15 mi)
- Village Pointe Shopping Center (2.67 mi)

Restaurants

- Pacific Eating House (1.25 mi)
- Copal Mexican Cuisine (3.25 mi)
- The Hunger Block (2.81 mi)

Coffee Shops

- A Hill of Beans Coffee Roasters (0.73 mi)
- Whisk + Measure Specialty Bakery & Coffee (1.06 mi)
- Karma Koffee (1.71 mi)

Parks

- Pepperwood Park (2.02 mi)
- Zorinsky Lake & Rec Area (2.03 mi)
- Standing Bear Lake (4.38 mi)



Teri & Sara Team
NEBRASKA Realty



Sara: (402) 917-2967
Teri: (402) 669-0545
e: teriandsara@nebraskarealty.com
w: www.teriandsara.com

FLOOR PLAN

14209 POPPLETON CIR

**SIZES AND DIMENSIONS ARE APPROXIMATE.
ACTUAL MAY VARY.**



Teri & Sara Team
NEBRASKA Realty



Sara: (402) 917-2967
Teri: (402) 669-0545
e: teriandsara@nebraskarealty.com
w: www.teriandsara.com