



15443 Douglas Cir  
Omaha, NE 68154



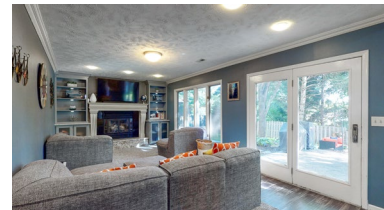
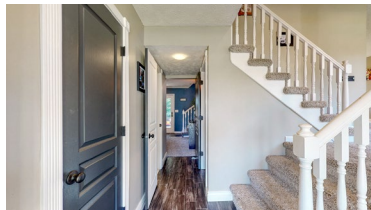
2,025 Sqft



3 bed, 3 bath



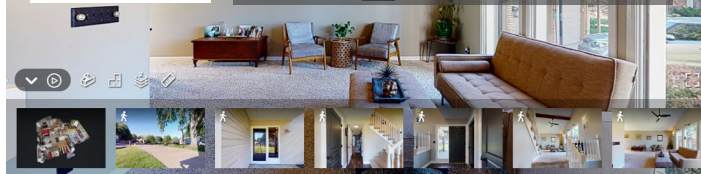
\$255,000



<https://realestate.lifestyle360vr.com/listings/15443-douglas-cir/>



**THIS HOME IS  
ALWAYS OPEN ONLINE™  
TAKE A VIRTUAL TOUR!**



**Teri & Sara Team**  
NEBRASKA Realty



Sara: (402) 917-2967  
Teri: (402) 669-0545  
e: [teriandsara@nebraskarealty.com](mailto:teriandsara@nebraskarealty.com)  
w: [www.teriandsara.com](http://www.teriandsara.com)

## DESCRIPTION

---

Beautiful tri-level home at top of cul-de-sac with updates galore inside and out. Private, completely fenced and treed back yard will make you feel like you are at a Colorado retreat. Huge 2 level paver patio with entertaining area built around large fire pit like no other you have seen. Gas line for a grill and to fire pit. Presently 3 bedroom. 4th bedroom wall was removed for a grand 16 x 15 Master bedroom with 10 x 7 sitting area. Kitchen updates include all stainless steel appliances including gas stove/oven in addition to convection oven. Rain Bird Sprinkler System. French drains. Minutes to Dodge Expressway, shopping, schools, and park. Showings start Sunday. AMA.

## PROPERTY FEATURES

---

- 12' Vaulted Master Ceiling
- Breakfast Bar
- Cul-De-Sac
- Gas Fireplace
- Gas Stove Top
- Granite Showers
- Wood Floors in Kitchen and Master Suite
- Huge Master Suite
- Large 2 Level Paver Patio
- Large Teed, Fully-Fenced Back Yard
- Sprinkler System
- Stainless Steel Appliances
- Stone Gas Fireplace

## WHAT'S NEARBY?

---

### Grocery

- Hy-Vee (2.05 mi)
- Baker's Supermarket (0.43 mi)
- Fresh Thyme Farmer's Market (3.2 mi)

### Shopping

- Westroads Mall (4.61 mi)
- Oak View Mall (2.27 mi)
- Village Pointe Shopping Center (1.46 mi)

### Restaurants

- Copal Mexican Cuisine (3.09 mi)
- Saltgrass Steak House (1.69 mi)
- Penn Station (2.07 mi)

### Coffee Shops

- Karma Koffee (0.57 mi)
- A Hill of Beans Coffee Roasters (1.7 mi)
- Whisk + Measure Specialty Bakery and Coffee (2.37 mi)

### Parks

- Pepperwood Park (1.08 mi)
- Zorinsky Lake & Rec Area (2.54 mi)
- Lawrence Youngman Park (3.42 mi)



Teri & Sara Team  
NEBRASKA Realty



Sara: (402) 917-2967  
Teri: (402) 669-0545  
e: [teriandsara@nebraskarealty.com](mailto:teriandsara@nebraskarealty.com)  
w: [www.teriandsara.com](http://www.teriandsara.com)