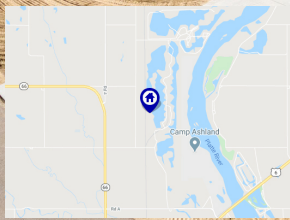




BERKSHIRE
HATHAWAY

HomeServices
Ambassador Real Estate

Sandy Pointe 1.5 Story Home



558 Sandy Pointe Pl
Ashland, NE 68003



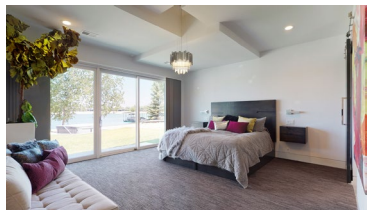
5,197 Sqft



4 bed, 6 bath



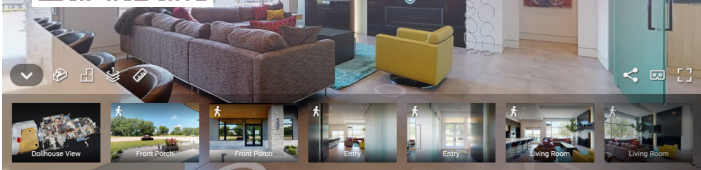
\$1,599,000



<https://realestate.lifestyle360vr.com/listings/558-sandy-pointe-place/>



THIS HOME IS
ALWAYS OPEN ONLINE™
TAKE A VIRTUAL TOUR!



Bryce Penke
Penke Real Estate Group
BHHS Ambassador Real Estate



c: (402) 578-9006
e: bryce.penke@bhhsamb.com
w: bhhsamb.com/bryce.penke



DESCRIPTION

Marvelous custom-built Malibu dream home. Lake living at its finest. This home is built to entertain. Features that stand out include a detached sports court, salt water pool, hot tub, outdoor bar, heated garage, and a second living room and bar area for gatherings. With over 7,000 sqft of living space, there is nothing that is missed on the house. Over-sized kids' bedrooms with their own bathrooms. Upstairs large loft for games and movies. A perfect house on the popular middle lake of Sandy Pointe.

PROPERTY FEATURES

- 12' Vaulted Living Room Ceiling
- 2 Fireplaces
- Covered Porch and Patio
- Detached Sports Court
- Heated Garage
- Stainless Steel Sink and Appliances
- Tile Floors Throughout Main Floor
- Walk-In Closets and Full Baths in All Bedrooms
- High-End Modern Fixtures and Finishes
- Hot Tub
- Huge Floor-to-Ceiling Windows
- Outdoor Bar
- Paneled Refrigerator
- Salt Water Swimming Pool
- Wet Bar
- Walk-In Tile Rainfall Master Shower

WHAT'S NEARBY?

Parks

- Eugene T Mahoney State Park (4.95 mi)
- Plum Creek Park (5.87 mi)
- Lee G. Simmons Wildlife Safari (5.6 mi)

Grocery

- No Frills Supermarket (3.31 mi)
- McKinney's Food Center (7.55 mi)
- Sun Mart Foods (16.71 mi)

Shopping

- Ashland Business District (3.1 mi)
- Nebraska Crossing Outlet Mall (5.55 mi)

Coffee Shops

- Cheri O's Coffee House & Ice Cream Parlor (3.09 mi)
- The Beanery (6.23 mi)
- McDonald's (5.4 mi)

Restaurants

- Cheri O's Coffee House & Ice Cream Parlor (2.85 mi)
- KC's Eastside Saloon (3.1 mi)
- Caddy's Parkside Grill (4.94 mi)



Bryce Penke

Penke Real Estate Group
BHHS Ambassador Real Estate

c: (402) 578-9006
e: bryce.penke@bhhsamb.com
w: bhhsamb.com/bryce.penke



