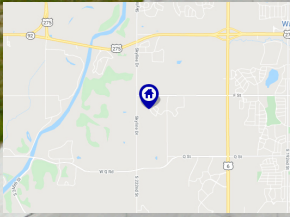




BERKSHIRE  
HATHAWAY

HomeServices  
Ambassador Real Estate

Westbury Farm Ranch Home



ECHELONHOMES



4403 S 219th St  
Elkhorn, NE 68022



3,013 Sqft



4 bed, 3 bath



\$469,900



<https://realestate.lifestyle360vr.com/listings/4403-s-219th-st>



THIS HOME IS  
**ALWAYS OPEN ONLINE™**  
TAKE A VIRTUAL TOUR!



**Chelsea Nelson**  
BHHS Ambassador Real Estate

c: 402-657-8905

e: chelsea.nelson@bhhsamb.com

w: chelseanelson.lifestyle360vr.com



## Description

---

Meet Echelon Homes' Tyler plan, which features two bedrooms on the main level and two in the basement. Sitting on a walkout corner lot, this gorgeous house offers sweeping views to the east that can be enjoyed from the elevated covered composite deck. The kitchen comes complete with European-style frameless cabinets, soft close hardware, and Cambria Quartz countertops. Relax in the spacious master suite, which offers a walk-in closet. Retreat to the master bathroom with double sinks, quartz countertops, and walk-in tiled shower. The basement is perfect for entertaining with lots of natural light, large bar area, and media room that could be converted to an exercise room or non-conforming 5th bedroom. Come see this stunning ranch in Westbury Farm today!

## Property Features

---

- 10' Vaulted Ceilings
- Cambria Quartz Countertops and Vanity Tops
- Covered Composite Deck
- Drop Zone
- Dual Vanities
- Elkhorn Public Schools
- Walk-In Master Shower
- Walk-In Pantry
- Engineered Wood Floors
- European-Style Frameless Cabinets
- Gas Cooktop
- High-End Fixtures
- Large Walk-In master Closet
- Stainless Steel Appliances
- Stone Gas Fireplace
- Wet Bar

## What's Nearby?

---

### Grocery

- Hy-Vee (4.09 mi)
- Fareway Stores (4.4 mi)
- McKinney's Food Center (4.97 mi)

### Shopping

- Village Pointe Shopping Center (4.97 mi)
- Nebraska Crossing Outlets (10.4 mi)
- Westroads Mall (13.5 mi)

### Restaurants

- West End Lounge (2.41 mi)
- Jukes Ale Works (4.79 mi)
- The Rude Shrimp (5.42 mi)

### Coffee Shops

- Green Beans Coffee (4.7 mi)
- Fala's Treasures & Coffee House (4.77 mi)
- Scooter's Coffee (6.41 mi)

### Parks

- Lawrence Youngman Park (4.08 mi)
- Zorinsky Lake & Recreation Area (5.28 mi)
- Two Rivers SRA (7.0 mi)



### Chelsea Nelson

BHHS Ambassador Real Estate

c: 402-657-8905

e: [chelsea.nelson@bhhsamb.com](mailto:chelsea.nelson@bhhsamb.com)

w: [chelseanelson.lifestyle360vr.com](http://chelseanelson.lifestyle360vr.com)

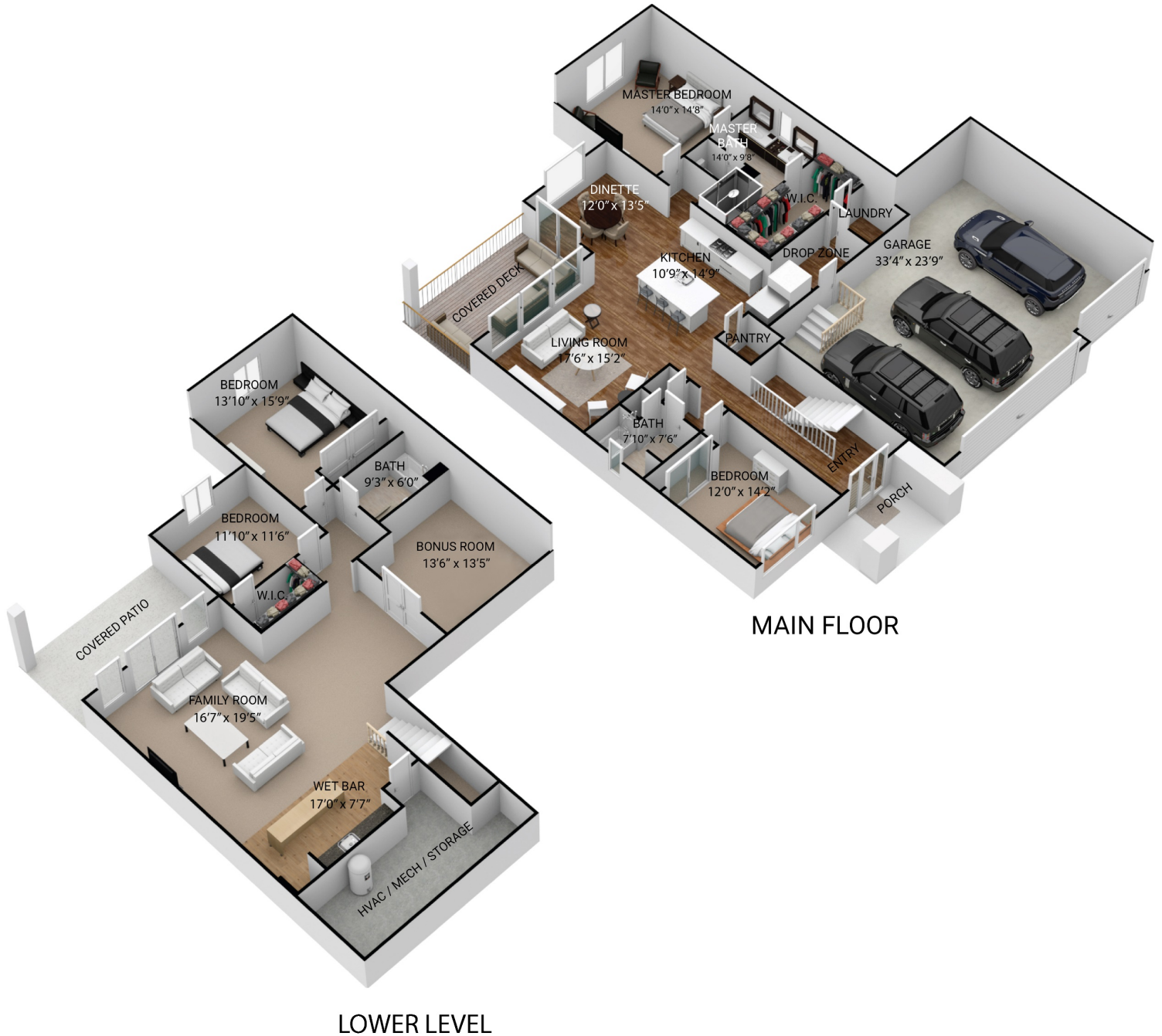




# FLOOR PLAN

4403 S 219th St

SIZES AND DIMENSIONS ARE APPROXIMATE.  
ACTUAL MAY VARY.



**Chelsea Nelson**  
BHHS Ambassador Real Estate



c: 402-657-8905  
e: chelsea.nelson@bhhsamb.com  
w: chelseanelson.lifestyle360vr.com