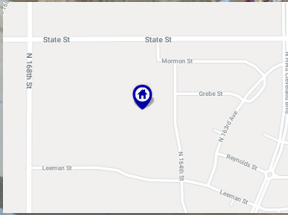




BERKSHIRE HATHAWAY

HomeServices Ambassador Real Estate

Summer Hill Farm Ranch Home



ECHELONHOMES



8119 N 166th St
Bennington, NE 68007



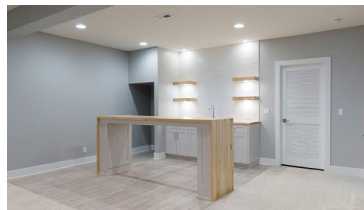
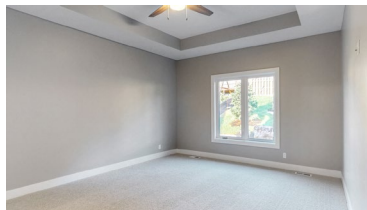
3,431 Sqft



6 bed, 3 bath



\$469,900



<https://realestate.lifestyle360vr.com/listings/8119-n-166th-st/>



THIS HOME IS
ALWAYS OPEN ONLINE™
TAKE A VIRTUAL TOUR!



Chelsea Nelson
BHHS Ambassador Real Estate

c: 402-657-8905
e: chelsea.nelson@bhhsamb.com
w: chelseanelson.lifestyle360vr.com



Description

Echelon Homes's Sydney floor plan is an open concept, 6 bedroom, 3 bathroom home that will wow you! Cambria quartz countertops and custom cabinetry are showcased throughout. Enjoy cooking in this expansive kitchen with gas cooktop, large island, and a walk-in pantry. LED accent lighting in the kitchen, great room, and basement rec area provides ambiance when entertaining. The spacious master bedroom offers a walk-in closet, and the master bathroom features a large rain head tiled shower. A drop zone area and laundry room are great bonuses. Stunning basement bar has butcher's block countertop and shelving. A covered patio awaits for you to unwind after a long day. Located in Summer Hill Farm in Bennington school district, come make this house yours!

Property Features

- 10 & 1/2' Vaulted Living Room Ceiling
- Bennington Public Schools
- Cambria Quartz Countertops and Vanity Tops
- Covered Deck and Patio
- Custom Woodwork and Cabinetry
- Drop Zone
- LED Accent Lighting
- Walk-In Pantry
- Wet Bar
- Dual Vanities
- Engineered Wood Floors
- Gas Cooktop
- Gas Fireplace
- High-End Fixtures and Finishes
- Landscaped Front and Back Yard
- Stainless Steel Appliances
- Walk-In Tiles Master Shower

What's Nearby?

Grocery

- Hy-Vee (2.38 mi)
- Fresh Thyme Farmers Market (2.63 mi)
- Baker's Supermarket (3.34 mi)

Shopping

- Village Pointe Shopping Center (4.34 mi)
- Regency Court Shopping & Dining (6.85 mi)
- One Pacific Place Shopping Center (7.28 mi)

Restaurants

- Porky Butts BBQ (2.12 mi)
- Copal Mexican Cuisine (3.7 mi)
- Jukes Ale Works (4.34 mi)

Coffee Shops

- Karma Koffee (4.05 mi)
- Roast Coffee House (5.28 mi)
- Stories Coffee Company (6 mi)

Parks

- Standing Bear Lake (2.83 mi)
- Pepperwood Park (3.65 mi)
- Lawrence Youngman Park (4.08 mi)



Chelsea Nelson

BHHS Ambassador Real Estate

c: 402-657-8905

e: chelsea.nelson@bhhsamb.com

w: chelseanelson.lifestyle360vr.com

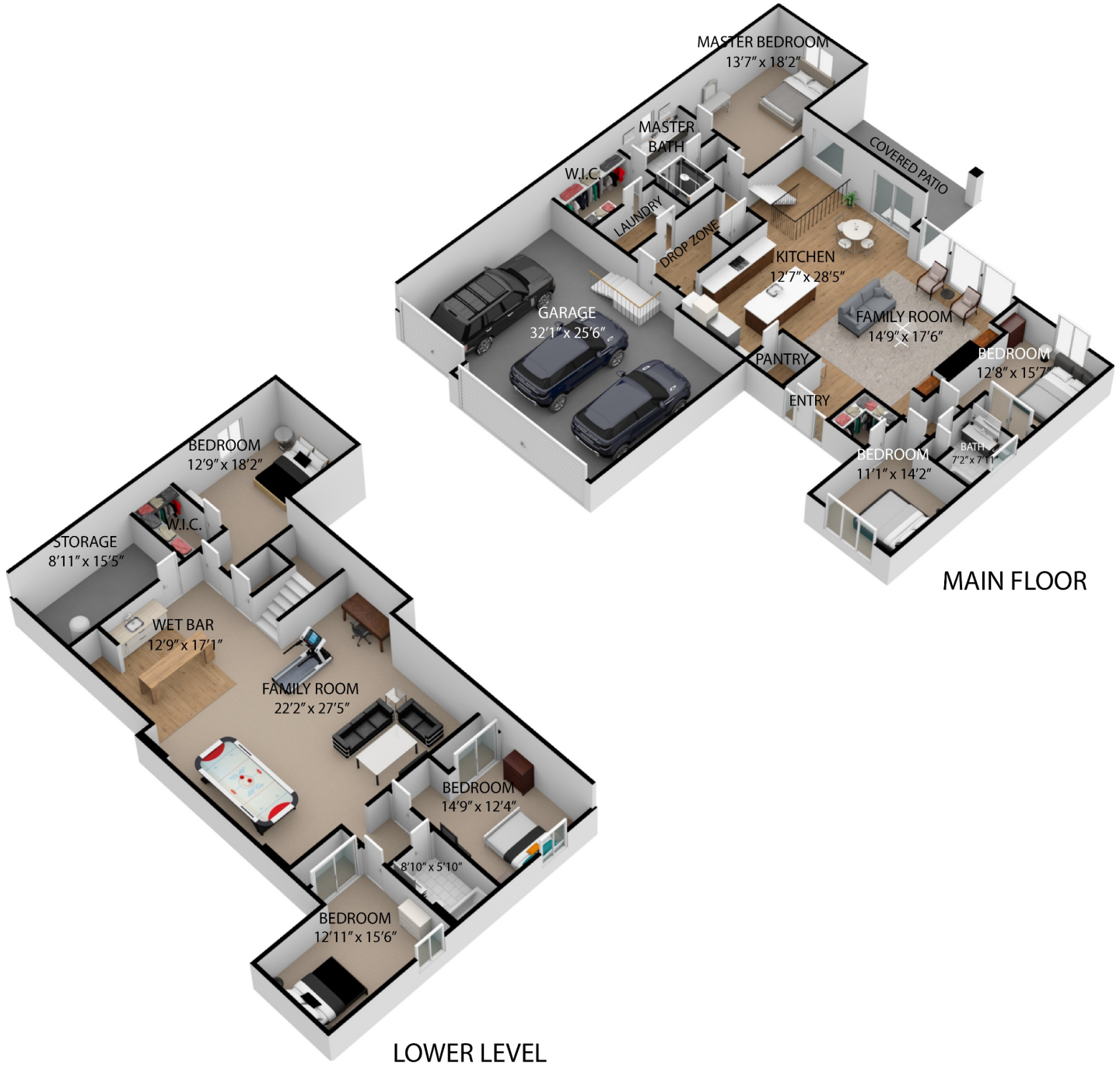




FLOOR PLAN

8119 N 166th St

SIZES AND DIMENSIONS ARE APPROXIMATE.
ACTUAL MAY VARY.



Chelsea Nelson
BHHS Ambassador Real Estate



c: 402-657-8905
e: chelsea.nelson@bhhsamb.com
w: chelseanelson.lifestyle360vr.com