



2854 40th Ave
Columbus, NE 68601



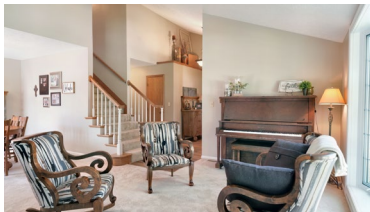
2,891 Sqft



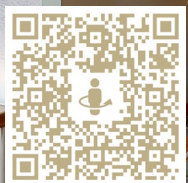
3 bed, 3 bath



\$335,000



<https://realestate.lifestyle360vr.com/listings/2854-40th-ave/>



THIS HOME IS
ALWAYS OPEN ONLINE™
TAKE A VIRTUAL TOUR!



Denise Thelen

c: (402) 276-7060
e: denise@c21rt.com
w: dialdenise.com

DESCRIPTION

Single Family Detached - Beautiful home in a quiet neighborhood awaits you! Formal living and dining room with vaulted ceiling and cozy fireplace. Spacious kitchen with newer flooring, countertops, and backsplash; plus includes center island, stainless steel appliances, built-in desk, and eat-in dining area. Kitchen is open to the main floor family room with wood stove and patio door leading to deck and large back yard. Convenient main floor laundry with amazing storage. Also handy main floor half bath off family room. Upstairs provides you with 3 bedrooms and 2 baths. Sizeable main bedroom has vaulted ceiling, large walk-in closet, and private bath. Additional spare bedrooms have nice closet space and large windows for natural light. The finished basement provides you with even more living space! Includes a family room with wet bar area - great for hosting upcoming Husker parties! Also includes a big rec room perfect for a pool table! A non-conforming 4th bedroom, bathroom, and storage room round out the basement.

PROPERTY FEATURES

- 2 Fireplaces
- Ample Cabinets and Counter Space
- Covered Porch
- Deck
- Eat-In Kitchen
- Floor-to-Ceiling Windows
- Wood Style Flooring in Entry and Kitchen
- Formal Dining Room
- Sprinkler System
- Stainless Steel Appliances
- Vaulted Ceilings
- Walk-In Master Closet
- Wet Bar

WHAT'S NEARBY?

Grocery

- Super Saver (0.55 mi)
- Hy-Vee (0.75 mi)
- Walmart Supercenter (3.13 mi)

Shopping

- Aurora Mall (51.05 mi)
- Aardvark Antique Mall (54.01 mi)
- The Container Store (68.99 mi)

Restaurants

- Husker Steak House (0.84 mi)
- Reeder's 11th St Grub & Pub (1.51 mi)
- Bistro on the Loup (1.76 mi)

Coffee Shops

- 38th St Coffee (0.65 mi)
- Starbucks (0.75 mi)
- The Broken Mug (0.87 mi)

Park

- Scribner City Park (40.14 mi)
- Fremont State Rec Area (41.63 mi)
- Streeter Park Campground (51.03 mi)



FLOOR PLAN
2854 40TH AVE

SIZES AND DIMENSIONS ARE APPROXIMATE. ACTUAL MAY VARY.

