



6421 Centennial Rd
Papillion, NE 68157



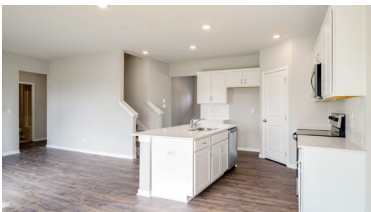
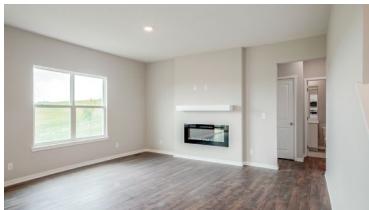
2,600 Sqft



5 bed, 3 bath



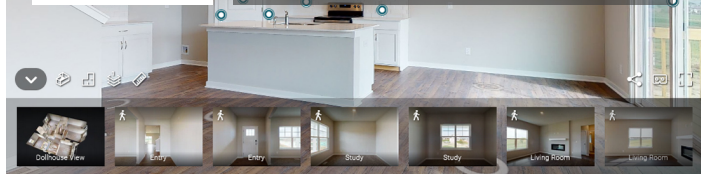
MODEL



<https://realestate.lifestyle360vr.com/listings/6421-centennial-rd/>



THIS HOME IS
ALWAYS OPEN ONLINE™
TAKE A VIRTUAL TOUR!



DESCRIPTION

D.R. Horton, America's Builder, presents the Hayden plan. This two-story home provides 5 large bedrooms and 3 full baths. The main level living area offers solid surface flooring throughout for easy maintenance. The staircase enters from the family room for convenience and privacy. The kitchen offers beautiful cabinetry, quartz countertops, a large pantry and a built-in island with ample seating space. Also on the main level, you'll find a spacious study, perfect for an office space, as well as a bedroom. Upstairs, you'll find 4 additional bedrooms, including one that features a gorgeous walk-in closet, as well as a 2nd living space that can be used as a great entertainment space. This home comes with all of the benefits of new construction.

PROPERTY FEATURES

- 2nd Floor Laundry
- 9' Ceilings on Main Floor
- Ample Cabinets and Counter Space
- Covered Porch
- Electric Fireplace
- Hardwood-Style Flooring
- Whirlpool® Stainless Steel Appliances
- Moen® Kitchen Sink and Faucets
- Quartz Vanity Tops with Moen® Faucets
- Study
- Upstairs Living Room
- Walk-In Closet
- Walk-In Pantry

WHAT'S NEARBY?

Grocery

- Fareway (0.87 mi)
- Hy-Vee (2.5 mi)
- ALDI (3.62 mi)

Shopping

- Shadow Lake Towne Center (2.51 mi)
- One Pacific Place Shopping Center (8.7 mi)
- Carhartt (2.56 mi)

Restaurants

- Ollie and Hobbes Craft Kitchen (2.66 mi)
- IkaSan Ramen (2.55 mi)
- The Hunger Block (5.8 mi)

Coffee Shops

- Papillion Nutrition (0.89 mi)
- The Beanery (1.97 mi)
- Green Beans Coffee (3.07 mi)

Park

- Walnut Creek Lake & Rec Area (3.74 mi)
- Swanson Park (2.68 mi)
- Seymour L. Smith Park (1.48 mi)