



6425 Centennial Rd
Papillion, NE 68157



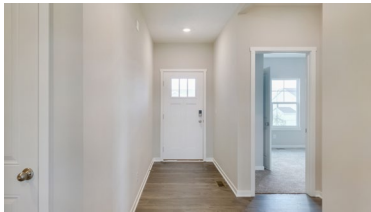
1,498 Sqft



3 bed, 2 bath



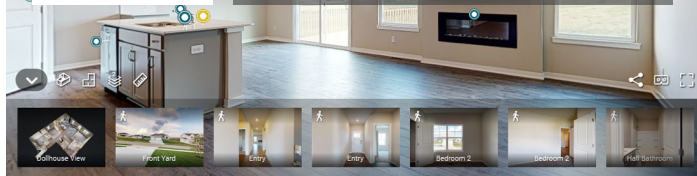
MODEL



<https://realestate.lifestyle360vr.com/listings/6425-centennial-rd/>



THIS HOME IS
ALWAYS OPEN ONLINE™
TAKE A VIRTUAL TOUR!



DESCRIPTION

D.R. Horton, America's Builder, presents the Hamilton plan. This home design provides 3 bedrooms and 2 full baths in a single-level, open living space. The lower living area offers solid surface flooring throughout for easy maintenance. Two large bedrooms are situated in the front of the home and another bedroom, which features a large walk-in closet and luxury bath, is situated in the back of the home for privacy. Enjoy entertaining in the spacious kitchen with a large built-in island, quartz countertops and beautiful cabinetry. The entry from the garage has a conveniently located closet for coats and jackets. A partially finished basement also features a rec room, offering additional living space. This home comes with all of the benefits of new construction.

PROPERTY FEATURES

- 9' Ceilings on Main Floor
- Ample Cabinets and Counter Space
- Electric Fireplace
- Gourmet Kitchen
- Hardwood-Style Flooring
- Moen® Kitchen Sink and Faucets
- Quartz Countertops
- Quartz Vanity Tops with Moen® Faucets
- Walk-In Closet
- Walk-In Pantry
- Whirlpool® Stainless Steel Appliances

WHAT'S NEARBY?

Grocery

- Fareway (0.87 mi)
- Hy-Vee (2.5 mi)
- ALDI (3.62 mi)

Shopping

- Shadow Lake Towne Center (2.51 mi)
- One Pacific Place Shopping Center (8.7 mi)
- Carhartt (2.56 mi)

Restaurants

- Ollie and Hobbes Craft Kitchen (2.66 mi)
- IkaSan Ramen (2.55 mi)
- The Hunger Block (5.8 mi)

Coffee Shops

- Papillion Nutrition (0.89 mi)
- The Beanery (1.97 mi)
- Green Beans Coffee (3.07 mi)

Park

- Walnut Creek Lake & Rec Area (3.74 mi)
- Swanson Park (2.68 mi)
- Seymour L. Smith Park (1.48 mi)