

21360 E Cir
Elkhorn, NE 68022



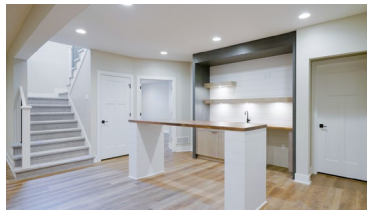
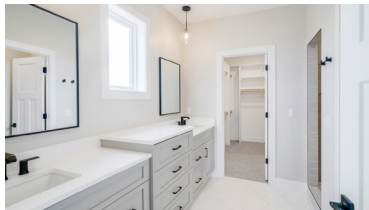
3,645 Sqft



5 bed, 3 bath



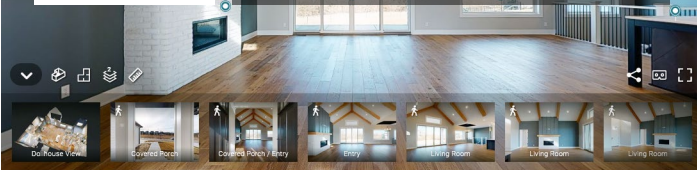
\$667,000



<https://realestate.lifestyle360vr.com/listings/21360-e-cir/>



THIS HOME IS
ALWAYS OPEN ONLINE™
TAKE A VIRTUAL TOUR!



Chelsea Nelson
Keller Williams kWELITE

c: 402-657-8905
e: chelsea@one80omaha.com
w: chelseanelson.lifestyle360vr.com



Description

Echelon Homes' modified Sydney modern farmhouse floor plan features a stunning vaulted ceiling in the great room, complete with cedar accent beams. Cambria quartz countertops, custom cabinetry, and woodwork are showcased throughout the home. Enjoy cooking in this expansive kitchen with gas cooktop, large island, and a walk-in pantry. LED accent lighting in the kitchen and basement rec area provides ambiance when entertaining. The spacious primary bedroom features a walk-in closet and the en-suite will wow you with its large tiled shower. A drop zone area and laundry room are great bonuses. Relax near the outdoor fireplace on the raised rear patio with a view of the tree-lined open space beyond the back yard!

Property Features

- Ample Cabinets and Counter Space
- Built-In Drop Zone
- Cambria Quartz Countertops and Vanity Tops
- Covered Porch and Patio
- Dual Entry Doors
- Electric Fireplace
- Pass-Through Laundry to Master Closet
- Vaulted Ceilings with Cedar Accent Beams
- Walk-In Pantry
- Exterior Fireplace
- Gas Cooktop
- GE Stainless Steel Appliances
- Hardwood-Style Flooring
- High-End Fixtures and Finishes
- Moen® Faucets
- Walk-In Tile Shower
- Wet Bar

What's Nearby?

Grocery

- ALDI (1.55 mi)
- Hy-Vee (2.51 mi)
- Family Fare Supermarket (3.1 mi)

Shopping

- Village Pointe Shopping Center (4.01 mi)
- Nebraska Crossing Outlets (9.5 mi)
- Westroads Mall (13.1 mi)

Restaurants

- Backlot Pizza + Kitchen (1.69 mi)
- 402 eat + drink (3.95 mi)
- Mouth of the South (3.35 mi)

Coffee Shops

- Stir Coffee Bar (3.22 mi)
- Green Beans Coffee (3.89 mi)
- Karma Koffee (5.34 mi)

Parks

- Zorinsky Lake & Recreation Area (4.24 mi)
- Walnut Grove Park (4.72 mi)
- Lawrence Youngman Park (5.6 mi)



Chelsea Nelson
Keller Williams kWELITE

c: 402-657-8905

e: chelsea@one80omaha.com

w: chelseanelson.lifestyle360vr.com