

19015 Sycamore Dr  
Gretna, NE 68028



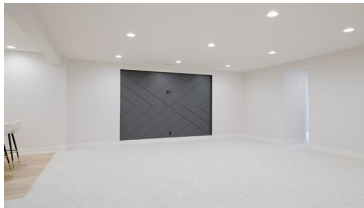
3,431 Sqft



6 bed, 3 bath



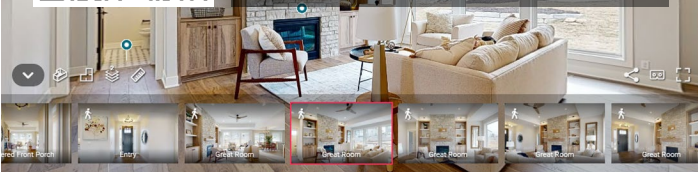
\$679,900



[https://realestate.lifestyle360vr.com/listings/sydneyplan\\_hiddenhollow/](https://realestate.lifestyle360vr.com/listings/sydneyplan_hiddenhollow/)



THIS HOME IS  
**ALWAYS OPEN ONLINE™**  
TAKE A VIRTUAL TOUR!



**Chelsea Nelson**  
Keller Williams kWELITE

c: 402-657-8905

e: chelsea.nelson@kw.com

w: chelseanelson.lifestyle360vr.com

## Description

---

Echelon Homes' Sydney floor plan is an open concept, 6 bedroom, 3 bathroom home that will wow you! Quartz countertops and custom cabinetry are showcased throughout. Enjoy cooking in this expansive kitchen with gas cooktop, large island, and a walk in pantry. LED accent lighting in the kitchen and basement bar area provides ambiance when entertaining. The spacious primary bedroom offers a walk-in closet connected to the laundry for added convenience. Beautiful en-suite features a large rain head tiled shower. A drop zone area right off the garage is a great bonus. Stunning basement bar has floating shelves and flows into the huge rec room. A covered patio awaits for you to unwind listening to the bubbling water feature after a long day. Come check out this one in popular Hidden Hollow, and make it yours!

## Property Features

---

- Ample Cabinet and Counter Space
- Covered Patio
- Covered Porch and Deck
- Custom Cabinets and Woodwork
- Drop Zone
- Engineered Wood Floors
- Floor-to-Ceiling Stone Fireplace
- GE Stainless Steel Appliances
- Gourmet Kitchen with Quartz Countertops
- High-End Fixtures and Finishes
- Pass-Through Laundry to Master Closet
- Vaulted Great Room and Primary Bedroom Ceilings
- Walk-In Pantry
- Walk-In Tile Shower
- Wet Bar

## What's Nearby?

---

### Grocery

- Fareway (1.81 mi)
- McKinney's Food Center (1.21 mi)
- Walmart Supercenter (2.49 mi)

### Shopping

- Nebraska Crossing (3.55 mi)
- Old Navy Outlet (3.59 mi)
- Carl Jarl Locksmiths (8.37 mi)

### Restaurants

- Heavy Brewing (1.12 mi)
- Noli's Pizzeria (2.01 mi)
- Backlot Pizza + Kitchen (3.91 mi)

### Coffee Shops

- The Beanery (2.19 mi)
- Stories Coffee Company (1.42 mi)
- Scooter's Coffee (1.87 mi)

### Parks

- Plum Creek Park (2.55 mi)
- Chalco Hills Recreation Area (3.61 mi)
- Coyote Run Spray Ground (4.28 mi)



### Chelsea Nelson

Keller Williams kWELITE

c: 402-657-8905

e: [chelsea.nelson@kw.com](mailto:chelsea.nelson@kw.com)

w: [chelseanelson.lifestyle360vr.com](http://chelseanelson.lifestyle360vr.com)