

4509 S 217<sup>th</sup> St  
Elkhorn, NE 68022



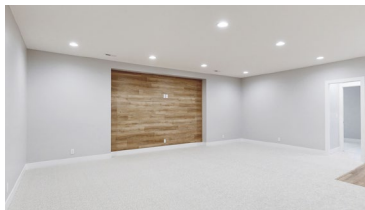
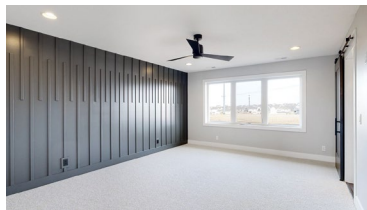
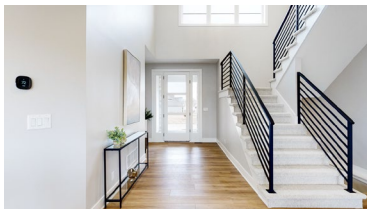
3,499 Sqft



5 bed, 5 bath



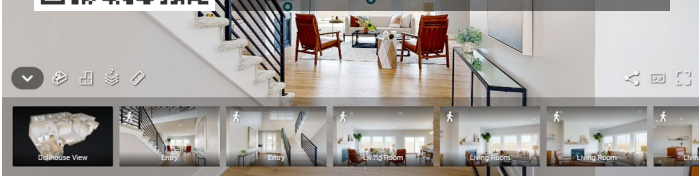
\$699,900



[https://realestate.lifestyle360vr.com/listings/summitplan\\_westburyfarm/](https://realestate.lifestyle360vr.com/listings/summitplan_westburyfarm/)



THIS HOME IS  
**ALWAYS OPEN ONLINE™**  
TAKE A VIRTUAL TOUR!



**Chelsea Nelson**  
Keller Williams kWELITE

c: 402-657-8905

e: chelsea.nelson@kw.com

w: chelseanelson.lifestyle360vr.com

## Description

---

Echelon Homes' new "Summit" two story plan has everything you could want and more! Offering 5 bedrooms and 5 baths this functional floor plan showcases custom cabinetry, quartz countertops, and unique features giving it some flair! White brick fireplace and an abundance of natural light fill the living room. Gourmet kitchen boasts a huge island, gas cooktop, and pantry. Stunning powder bath and drop zone are off the garage for added convenience. Expansive foyer with modern horizontal steel railing leads to efficient 2nd floor level maximizing space with primary and 3 other large bedrooms. Primary bedroom with accent wall and barn door opening to gorgeous en-suite and walk-in closet. Basement rec area is perfect for entertaining with a wet bar that features floating shelves, wine fridge, and accent lighting. Another bedroom in the lower level for all your needs. Relax in the backyard with a firepit and no backyard neighbors. Come check out this beautiful home in Westbury Farm!

## Property Features

---

- 2<sup>nd</sup> Floor Laundry
- Ample Cabinet Space
- Covered Porch and Patio
- Custom Cabinets and Woodwork
- Drop Zone
- Engineered Wood Floors
- Walk-In Pantry
- Walk-In Tile Shower
- Fire Pit
- Floor-to-Ceiling Brick Fireplace
- GE Stainless Steel Appliances
- Gourmet Kitchen with Quartz Countertops
- High-End Fixtures and Finishes
- Walk-In Closet
- Wet Bar

## What's Nearby?

---

### Grocery

- Family Fare Supermarket (2.5 mi)
- Hy-Vee (3.18 mi)
- McKinney's Food Center (4.84 mi)

### Shopping

- Village Pointe Shopping Center (7.0 mi)
- Oak View Mall (7.8 mi)
- Nebraska Crossing Outlets (9.4 mi)

### Restaurants

- Backlot Pizza + Kitchen (1.61 mi)
- Mouth of the South (4.21 mi)
- Heavy Brewing (4.68 mi)

### Coffee Shops

- The Grind Coffeehouse (3.1 mi)
- Stir Coffee Bar (4.08 mi)
- Stories Coffee Company (4.29 mi)

### Parks

- Coyote Run Spray Ground (2.33 mi)
- Lawrence Youngman Park (4.03 mi)
- Zorinsky Lake & Rec Area (5.04 mi)



### Chelsea Nelson

Keller Williams kWELITE

c: 402-657-8905

e: chelsea.nelson@kw.com

w: chelseanelson.lifestyle360vr.com