



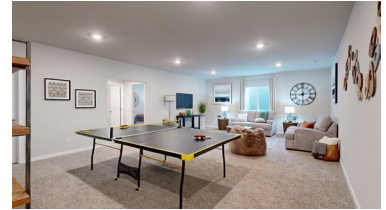
6437 Clear Creek St
Papillion, NE 68157



2,511 Sqft



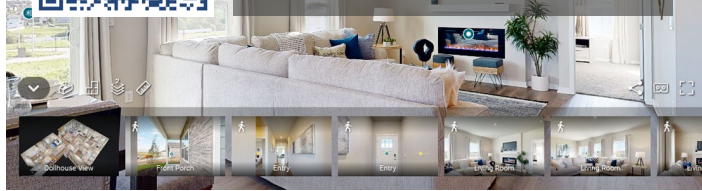
4 bed, 3 bath



<https://realestate.lifestyle360vr.com/listings/6437-clear-creek-st/>



THIS HOME IS
ALWAYS OPEN ONLINE™
TAKE A VIRTUAL TOUR!



D.R. Horton Omaha

p: (402) 316-1690

e: omahainfo@drhorton.com

w: drhorton.com/nebraska/omaha

DESCRIPTION

D.R. Horton, America's Builder, presents the Neuville. The Neuville offers 4 bedrooms and 3 bathrooms in a single level living area. This home includes a finished basement providing over 2,500 square feet of total living space! The main living area offers solid surface flooring throughout as well as a spacious, open layout that provides the perfect entertainment space. The kitchen features quartz countertops, a large corner pantry, and an oversized island overlooking the dining and great room areas. Two large bedrooms are split from the primary bedroom in the front of the home. Heading into the primary bedroom, you'll find a large walk-in closet and en-suite bathroom with dual vanity sinks perfect for relaxing at the end of the day. As you make your way to the finished lower level, you'll find an additional living space as well as the large fourth bedroom, full bathroom, and tons of storage space!

PROPERTY FEATURES

- Ample Cabinets and Counter Space
- Electric Fireplace
- Gourmet Kitchen
- Hardwood-Style Flooring
- High-Efficiency Furnace & A/C
- Moen® Kitchen Sink and Faucets
- Quartz Countertops
- Walk-In Closet
- Walk-In Pantry
- Whirlpool® Stainless Steel Appliances

WHAT'S NEARBY?

Grocery

- Fareway (0.89 mi)
- Family Fare Supermarket (1.76 mi)
- Hy-Vee (2.38 mi)

Shopping

- Kajoma's Fashion Boutique (1.75 mi)
- Shadow Lake Towne Center (2.4 mi)
- Oak View Mall (10.2 mi)

Restaurants

- Wilby's Comfort 2.0 (2.15 mi)
- Ollie & Hobbe's Craft Kitchen (2.55 mi)
- Talus Sprints & Sustenance (3.87 mi)

Coffee Shops

- Coffey Alley - Callejon del Café (1.77 mi)
- The Beanery (1.88 mi)
- Coffee Society Café (3.52 mi)

Park

- Halleck Park (1.8 mi)
- Schwer Park (2.16 mi)
- Swanson Park (2.7 mi)