

1005 Summerwood Dr.  
Fremont, NE 68025



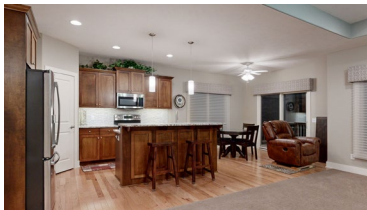
1,662 Sqft



3 bed, 2 bath



\$430,000



<https://realestate.lifestyle360vr.com/listings/1005-summerwood-dr/>



**THIS HOME IS  
ALWAYS OPEN ONLINE™  
TAKE A VIRTUAL TOUR!**



**Teri & Sara Team**  
NEBRASKA Realty



Sara: (402) 917-2967  
Teri: (402) 669-0545  
e: [teriandsara@nebraskarealty.com](mailto:teriandsara@nebraskarealty.com)  
w: [www.teriandsara.com](http://www.teriandsara.com)

## DESCRIPTION

---

Very well-cared-for one owner custom-built ranch home with 1,662sqft on main level. Upgrades include but not limited to flooring, window coverings, lighting, garage doors, and high-efficiency furnace. 9' ceilings on both main level and basement. Great room has large windows with custom window treatments on both sides of gas fireplace, tray ceiling with ceiling fan, and can lights. Great Room is open to kitchen and dining area. Kitchen has custom birch cabinets and lots of countertop space, pantry, SS appliances, dining area, and sliding glass doors that walk out to large covered deck. There is also a patio area in back. Covered front porch. Gutter Guards. Level and mostly-fenced yard with sprinkler system. All garage doors are 8' tall. 50 Gallon hot water heater. Washer and Dryer Stay. 2 TVs and mounts stay. Basement has daylight and egress window. AMA.

## WHAT'S NEARBY?

---

### Grocery

- Walmart Supercenter (1.06 mi)
- Baker's (1.19 mi)
- Hy-Vee (1.58 mi)

### Shopping

- Fremont Mall (2.2 mi)
- The Shops of Elkhorn (18.4 mi)
- Village Pointe Shopping Center (23 mi)

### Restaurants

- Black Label (1.2 mi)
- Semo Pasa + Wine (1.72 mi)
- Reinita Restaurant (1.76 mi)

### Coffee Shops

- Starbucks (1.38 mi)
- Blue Bottle Coffeehouse Inc (1.73 mi)
- The Milady Coffeehouse (1.76 mi)

### Parks

- Clemons Park (0.6 mi)
- Johnson Park (1.1 mi)
- John C Fremont City Park (2.1 mi)