



1829 Robertson Dr.  
Omaha, NE 68114



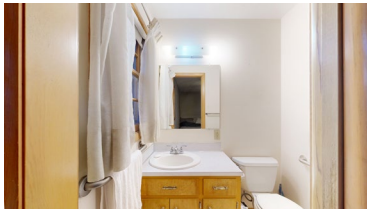
1,271 Sqft



3 bed, 2.5 bath



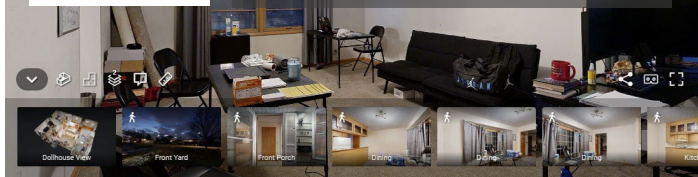
\$225,000



<https://realestate.lifestyle360vr.com/listings/1829-robertson-dr/>



**THIS HOME IS  
ALWAYS OPEN ONLINE™  
TAKE A VIRTUAL TOUR!**



**Teri & Sara Team**  
NEBRASKA Realty



Sara: (402) 917-2967  
Teri: (402) 669-0545  
e: [teriandsara@nebraskarealty.com](mailto:teriandsara@nebraskarealty.com)  
w: [www.teriandsara.com](http://www.teriandsara.com)

## DESCRIPTION

---

District 66 ranch home with 3 bedrooms and 2.5 bathrooms on main level. Large, unfinished walk-out lower level has so much potential. Wood floors in bedrooms. Home sits on West facing corner lot. Nice dining area off kitchen. Combined handicap accessible bathroom and laundry room replaced most of the garage. Permanent siding. Walk-out lower level to 18 x 12 concrete patio. Garage space that wasn't used for bathroom is storage room. Convenient location between Blondo and Dodge. A/C & roof approximately 3-4 years old. AMA

## WHAT'S NEARBY?

---

### Grocery

- Mediterranean Grocery (0.47 mi)
- Hy-Vee (0.69 mi)
- Natural Grocers (1.2 mi)

### Shopping

- Westroads Mall (1.64 mi)
- One Pacific Place Shopping Center (2.61 mi)
- Oak View Mall (5.89 mi)

### Restaurants

- New York Halal Food (0.8 mi)
- Everett's (0.82 mi)
- The Corner Kitchen (4.68 mi)

### Coffee Shops

- Roast Coffee House (2.7 mi)
- Archetype Coffee (3.64 mi)
- Astute Coffee (5.21 mi)

### Parks

- Keystone Park (1.6 mi)
- OPPD Arboretum (2.05 mi)
- Elmwood Park (2.41 mi)