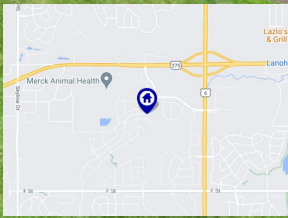




BERKSHIRE
HATHAWAY

HomeServices
Ambassador Real Estate

R&A Builders Privada Ranch Home



20928 Barbara Plz Cir
Elkhorn, NE 68022



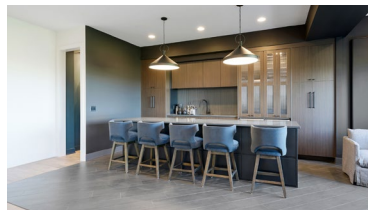
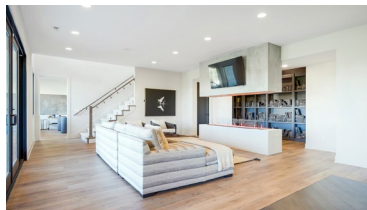
4,844 Sqft



5 bed, 5 bath



\$2,000,000



<https://realestate.lifestyle360vr.com/listings/20928-barbara-plaza-cir/>



THIS HOME IS
ALWAYS OPEN ONLINE™
TAKE A VIRTUAL TOUR!



John Miles
BHHS Ambassador Real Estate

c: (402) 598-0598
e: john@anewhome4you.com
w: anewhome4you.com



DESCRIPTION

Now Complete! Magnificent new ranch plan by R&A Builders set on one of the largest acreage lots in Privada with a view for miles! Professionally decorated with gorgeous finishes. 5 bedrooms, 5 bathrooms, oversize 4 car garage. Stunning kitchen & living areas. Low mill levy – No SID! Conveniently located on 204th & West Center Rd, you are close to everything – shopping, groceries, parks, & lakes. Walk to Blue Sage Elementary (buyers need to confirm school assignments).

WHAT'S NEARBY?

Grocery

- Family Fare Supermarket (1.44 mi)
- ALDI (1.46 mi)
- Hy-Vee (2.94 mi)

Shopping

- Garment District (3.35 mi)
- Village Pointe Shopping Center (3.88 mi)
- Shops of Legacy (4.2 mi)

Restaurants

- The Hill (3.03 mi)
- Salted Edge (3.56 mi)
- Jukes Ale Works (3.83 mi)

Coffee Shops

- The Grind Coffeehouse (2.05 mi)
- Stir Coffee Bar (3.32 mi)
- The Commons Coffee Shop (6.52 mi)

Parks

- Coyote Run Spray Ground (2.34 mi)
- Lawrence Youngman Park (2.97 mi)
- Pepperwood Park (5.68 mi)



FLOOR PLAN

20928 Barbara Plaza Circle

SIZES AND DIMENSIONS ARE APPROXIMATE.
ACTUAL MAY VARY.

