

240 E 2nd St
Leigh, NE 68643



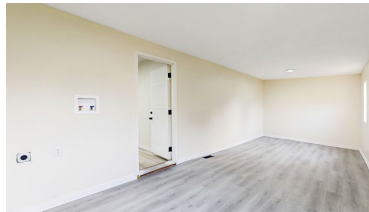
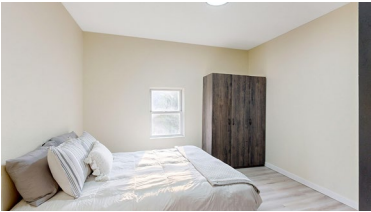
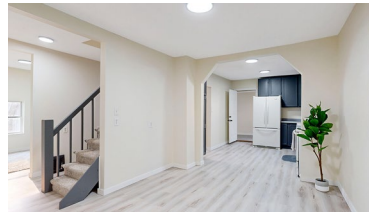
1,620 Sqft



5 bed, 2 bath



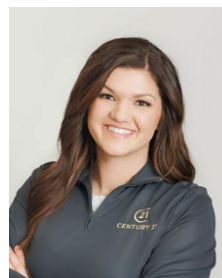
\$174,900



<https://realestate.lifestyle360vr.com/listings/240-e-2nd-st/>



THIS HOME IS
ALWAYS OPEN ONLINE™
TAKE A VIRTUAL TOUR!



Shelly Frauendorfer

c:(402) 942-1974

e: shellyf@c21rt.com

w: shellyfrauendorfer.sites.c21.homes

DESCRIPTION

Welcome to your newly updated sanctuary! This spacious 5-bedroom, 2-bathroom home has been renovated from top to bottom, offering a perfect blend of modern comfort and classic charm. Step inside to discover brand new flooring that gleams underfoot, complemented by fresh paint that breathes new life into every room. Natural light floods through new windows, creating an inviting ambiance throughout. The home boasts a recently completed addition at the back, expanding the living space and providing a seamless connection to the outdoors. Each of the five bedrooms is generously sized, offering ample space for rest and relaxation. The updated bathrooms feature stylish fixtures and finishes, ensuring both convenience and luxury. Outside, the property continues to impress with room to build a shed, garage, or create an outdoor oasis. Located near area schools, parks, and main street amenities. Don't miss out on the opportunity to make this beautifully updated house your new home. Schedule a showing today and envision your future in this move-in ready masterpiece!

WHAT'S NEARBY?

Grocery

- Steve's Madhouse Market (0.12 mi)
- Just Another Mini Market (0.2 mi)
- Didier's Grocery (26.7 mi)

Shopping

- Bomgaars (26.4 mi)
- The Village Centre, Columbus (26.6 mi)
- Sunset Plaza Mall (31.4 mi)

Restaurants

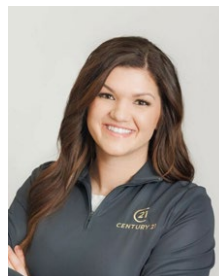
- Bill's (0.12 mi)
- The Park Place (0.45 mi)
- Black Cow Fat Pig Pub & Steak (24.39 mi)

Coffee Shops

- 38th Street Coffee (25.9 mi)
- Scooter's Coffee (26.0 mi)
- The Broken Mug (26.5 mi)

Park

- Maple Creek Recreation Area (1.1 mi)
- Dead Timber State Recreation Area (28.7 mi)
- Scribner City Park (32.0 mi)



Shelly Frauendorfer

c: (402) 942-1974

e: shellyf@c21rt.com

w: shellyfrauendorfer.sites.c21.homes