



Darin Whitmer

o: (402) 720-1241

e: dwhitmer@dodgecountyrealtygroup.com

w: dodgecountyrealtygroup.com



1030 MICHAEL ST

MAIN FLOOR

1030 MICHAEL ST

SIZES AND DIMENSIONS ARE APPROXIMATE. ACTUAL MAY VARY.

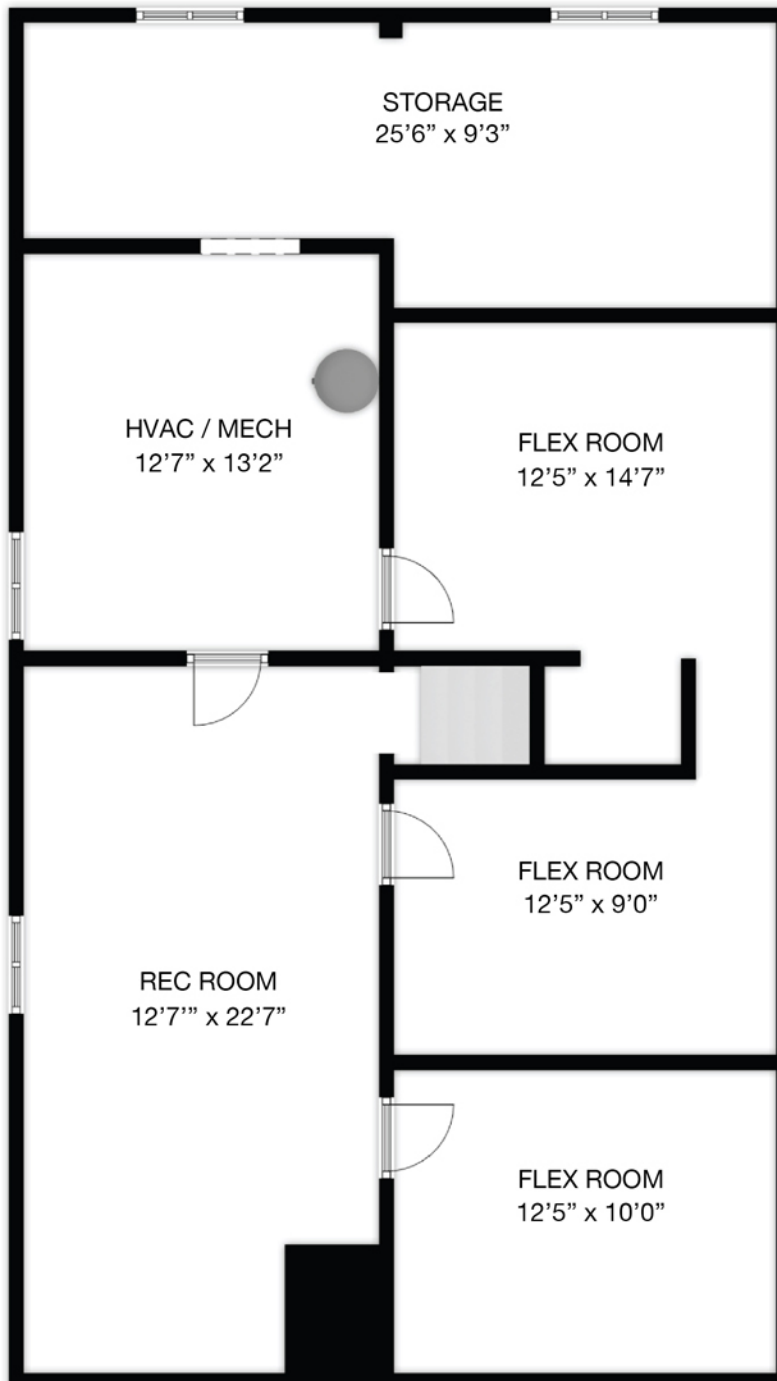


Darin Whitmer
o: (402) 720-1241
e: dwhitmer@dodgecountyrealtygroup.com
w: dodgecountyrealtygroup.com

LOWER LEVEL

1030 MICHAEL ST

SIZES AND DIMENSIONS ARE APPROXIMATE. ACTUAL MAY VARY.



Darin Whitmer

o: (402) 720-1241

e: dwhitmer@dodgecountyrealtygroup.com

w: dodgecountyrealtygroup.com