



1030 Michael St
Fremont, NE 68025



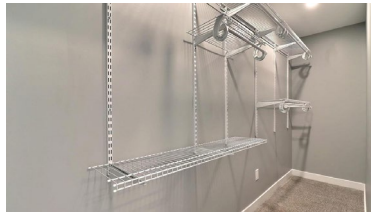
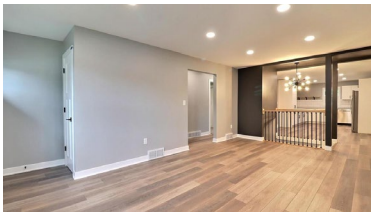
2,614 Sqft



4 bed, 3 bath



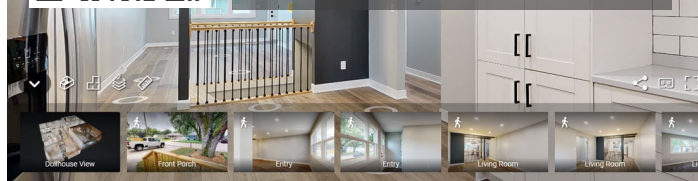
\$315,000



<https://realestate.lifestyle360vr.com/listings/1030-michael-st/>



THIS HOME IS
ALWAYS OPEN ONLINE™
TAKE A VIRTUAL TOUR!



Darin Whitmer

Broker

Dodge County Realty Group

o: (402) 719-9269

e: dwhitmer@dodgecountyrealtygroup.com

w: dodgecountyrealtygroup.com

DESCRIPTION

This undeniably beautiful 4 bed | 3 bath | 2 car garage ranch home is one you will have to see to believe. Step inside to discover a spacious, open, and inviting home that features trendy luxury plank floors & carpeting, can lighting, updated colors, and ample natural lighting beaming through energy efficient windows. In addition to spacious front and rear living rooms, the home's gorgeous kitchen is a culinary dream come true that is outfitted with sleek stainless steel appliances including a gas range, abundant counter space, and a large dining area – perfect for both everyday meals and entertaining. The home's four generously sized bedrooms include a primary bed with ensuite & walk-in closet, two guest bedrooms share a Jack & Jill bath, and a 3rd guest bedroom has a walk-in closet plus direct access to a 3/4 bath. A charming mudroom adds convenience, organization, and a main floor laundry area. The finished lower level features a 3rd living area plus two generous flex rooms.

WHAT'S NEARBY?

Grocery

- Baker's (1.52 mi)
- Hy-Vee (1.67 mi)
- ALDI (3.39 mi)

Coffee Shops

- The Milady Coffeehouse (0.96 mi)
- Blue Bottle Coffeehouse (1.0 mi)
- Scooter's Coffee (1.52 mi)

Shopping

- Fremont Mall (2.3 mi)
- Westroads Mall (26.05 mi)
- Nebraska Crossing (27.27 mi)

Parks

- John C Fremont City Park (1.4 mi)
- Fremont State Recreation Area (4.1 mi)
- Fremont Splash Station (4.2 mi)

Restaurants

- Reinita Restaurant (1.05 mi)
- 415 Bar & Grill (1.28 mi)
- Black Label (1.63 mi)

FLOOR PLAN

1030 MICHAEL ST

**SIZES AND DIMENSIONS ARE APPROXIMATE.
ACTUAL MAY VARY.**

MAIN FLOOR



LOWER LEVEL

