

13036 Shirley St  
Omaha, NE 68144



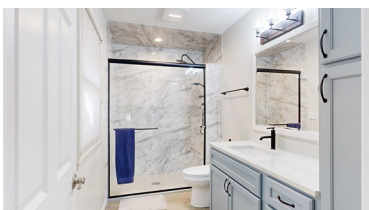
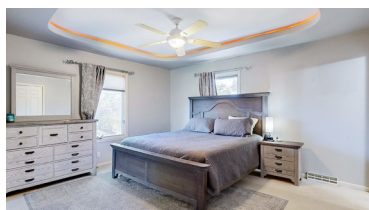
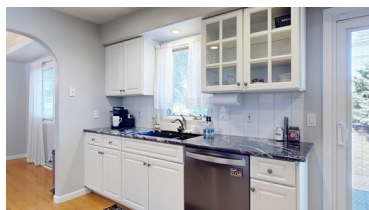
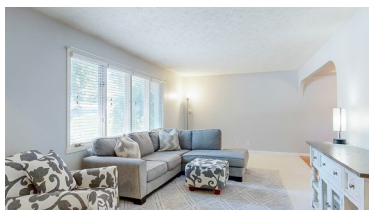
2,159 Sqft



3 bed, 2.5 bath



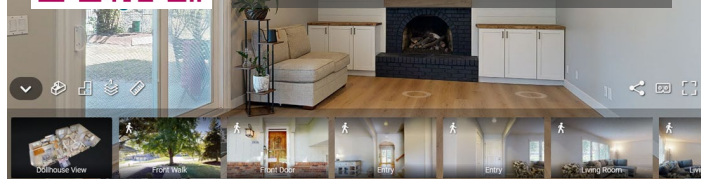
\$369,900



<https://realestate.lifestyle360vr.com/listings/13036-shirley-st/>



THIS HOME IS  
**ALWAYS OPEN ONLINE™**  
TAKE A VIRTUAL TOUR!



**Kayla Petersen**

c: (712) 307-0470

e: [kayla@turnkeyservicesrealty.com](mailto:kayla@turnkeyservicesrealty.com)

w: [turnkeyservicesrealty.com](http://turnkeyservicesrealty.com)

## DESCRIPTION

---

Welcome to this beautifully updated home! On the main floor, enjoy 2 living rooms, the updated kitchen with a new sliding door leading outside, a formal dining area, and the main floor half bathroom/laundry room. The flooring in the 2nd living room with the freshly painted fireplace is new as well as the shelves/cabinets. Also take note of easy access to the heated 2 car garage. Next take a few steps upstairs where the 3 bedrooms are. The primary suite is spacious and luxurious- the bathroom has been completely remodeled! The full bathroom is also conveniently located on this floor across from the 2 bedrooms. In the basement, there's a rec area and lots of great storage. Step outside and have the peace of mind with the new fence, plus the back exterior is scheduled to be painted in October, and enjoy that there's no backyard neighbors. The location of this home and the amazing updates makes this house highly sought after!

## WHAT'S NEARBY?

---

### Grocery

- Baker's (1.02 mi)
- Hy-Vee (1.71 mi)
- Hy-Vee (8.0 mi)

### Shopping

- Oak View Mall (1.17 mi)
- One Pacific Place Shopping Center (2.37 mi)
- West roads Mal (3.13 mi)

### Restaurants

- Pacific Eating House (0.52 mi)
- Public Eating You
- Clio (9.7 mi)

### Coffee Shops

- Zen Coffee (0.41 mi)
- The Commons Coffee Shoppe (4.66 mi)
- Stories Coffee Company (1.94 mi)

### Park

- Zorinsky Lake & Recreation Area (2.48 mi)
- Pepperwood Park ( 2.79)
- Trendwood Park (0.47 mi)