



1522 S 32nd Avenue



Dawn Grimshaw

c: (402) 305-8631

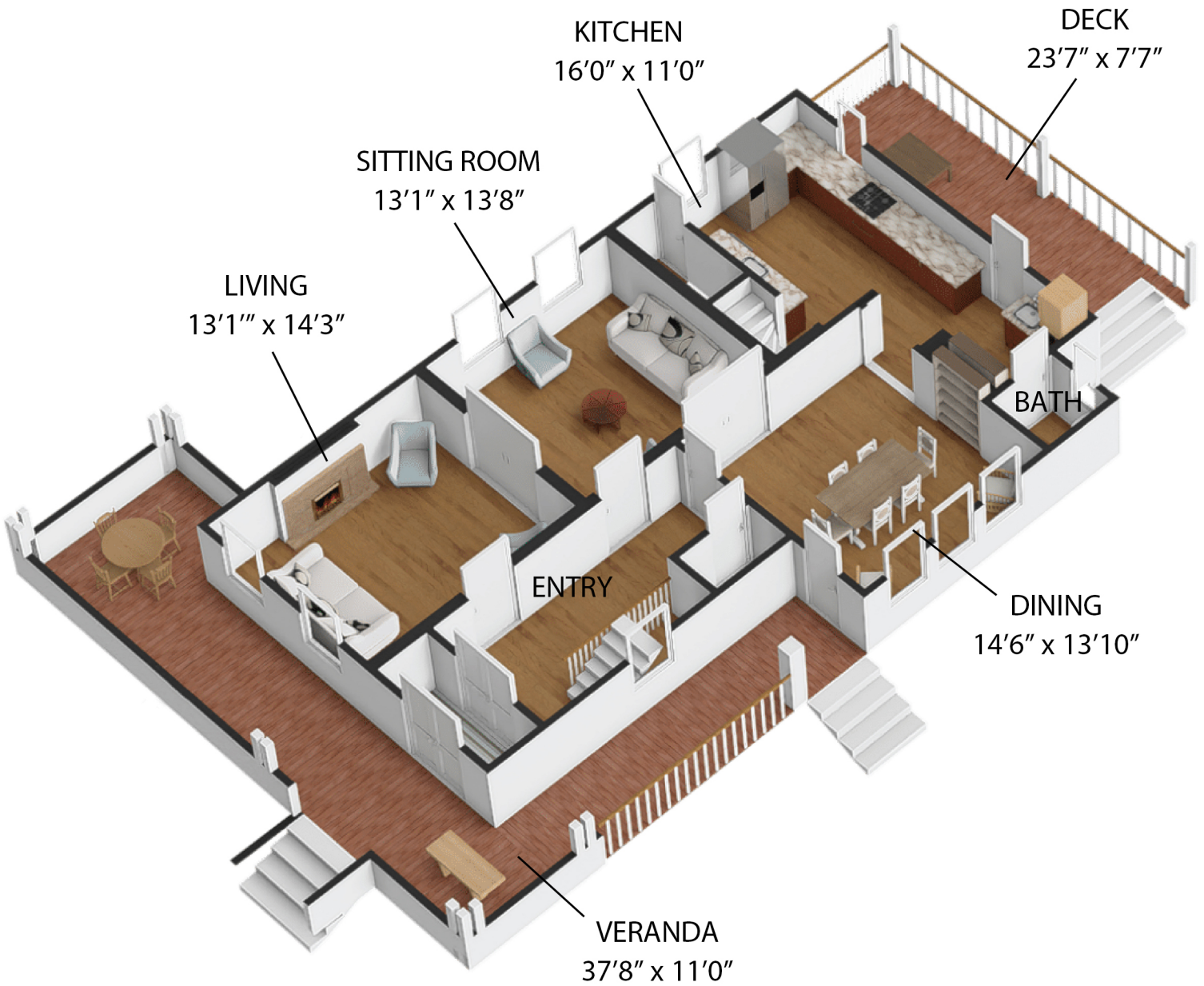
e: dgrimshaw@betteromaha.com

w: omahahomeprosteam.com

MAIN FLOOR

1522 S 32nd Ave

SIZES AND DIMENSIONS ARE APPROXIMATE. ACTUAL MAY VARY.



Dawn Grimshaw

c: (402) 305-8631

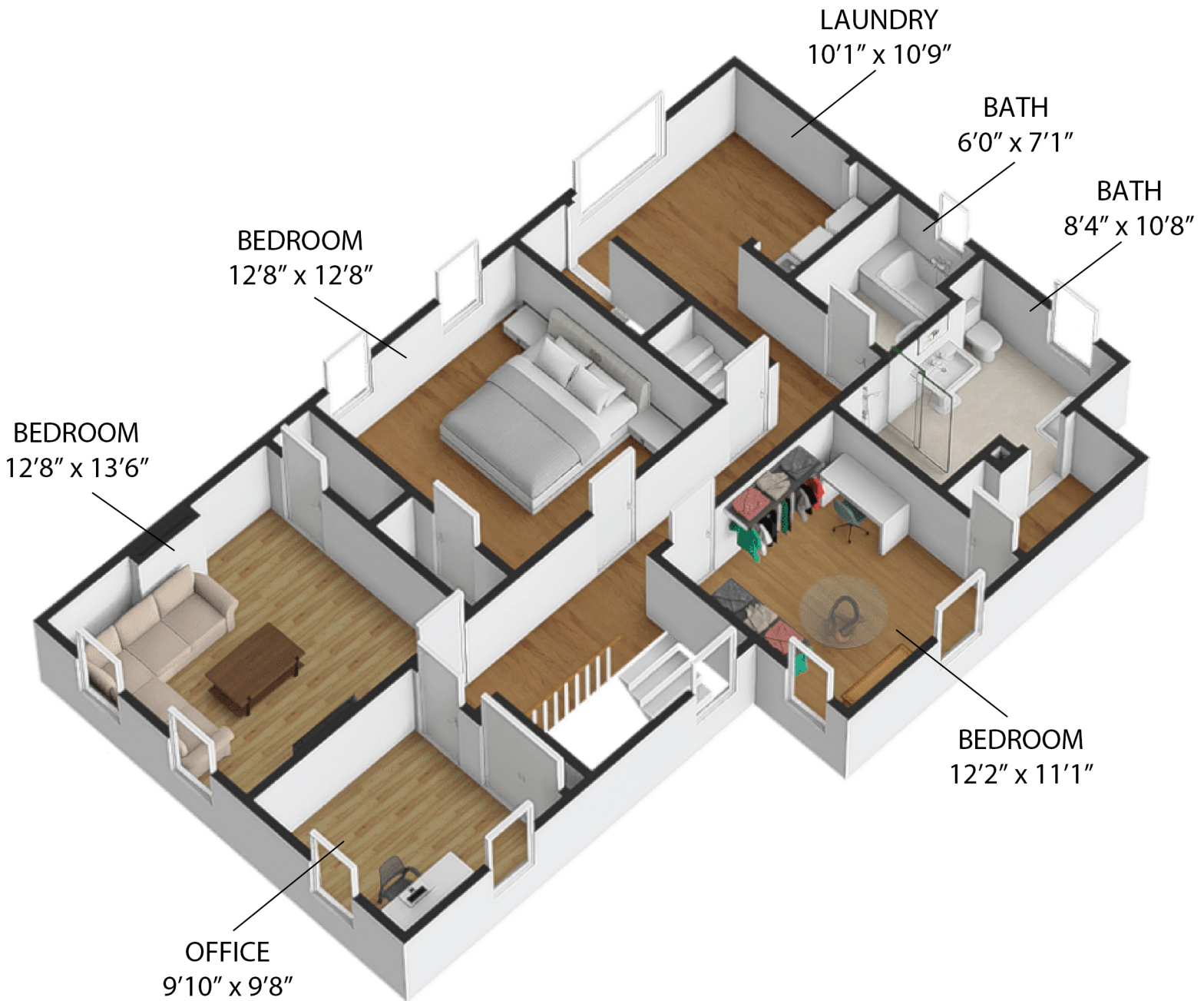
e: dgrimshaw@betteromaha.com

w: omahahomeprosteam.com

APARTMENT FLOOR (2)

1522 S 32nd Ave

SIZES AND DIMENSIONS ARE APPROXIMATE. ACTUAL MAY VARY.



Dawn Grimshaw

c: (402) 305-8631

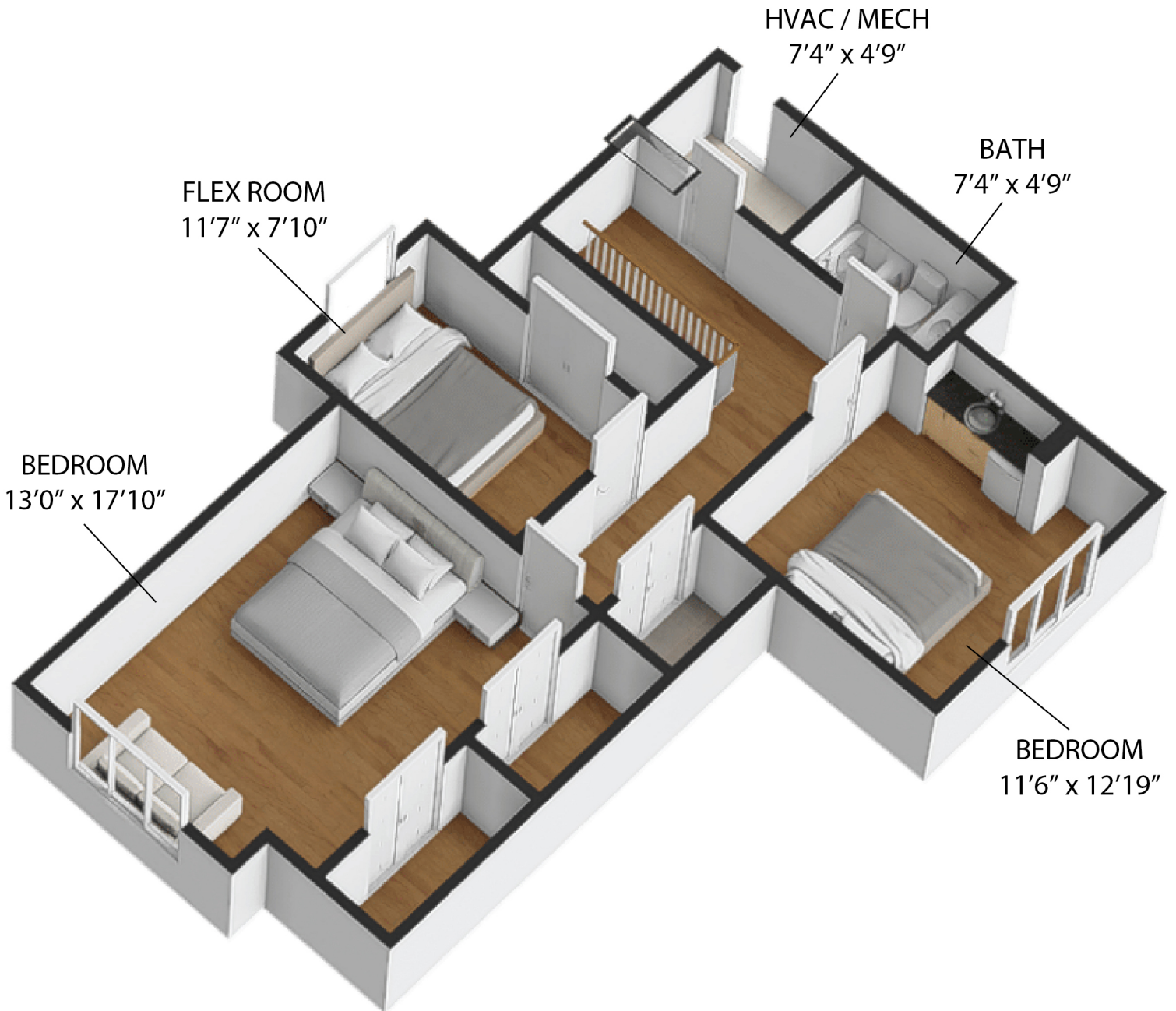
e: dgrimshaw@betteromaha.com

w: omahahomeprosteam.com

GUEST FLOOR (3)

1522 S 32nd Ave

SIZES AND DIMENSIONS ARE APPROXIMATE. ACTUAL MAY VARY.



Dawn Grimshaw

c: (402) 305-8631

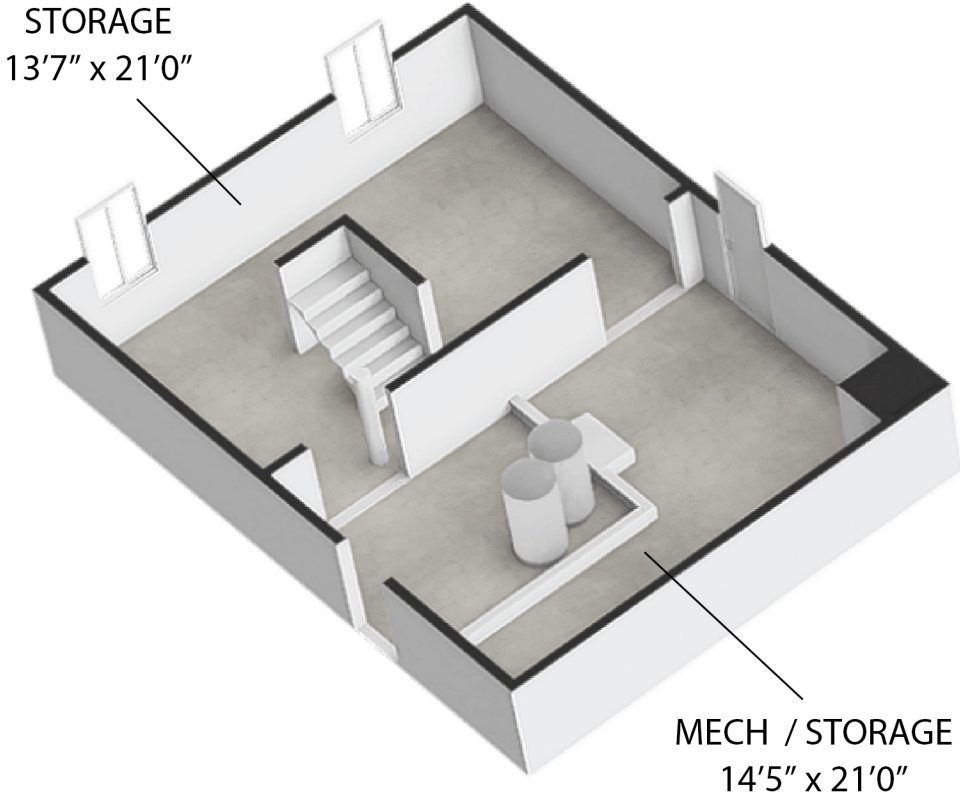
e: dgrimshaw@betteromaha.com

w: omahahomeprosteam.com

LOWER LEVEL

1522 S 32nd Ave

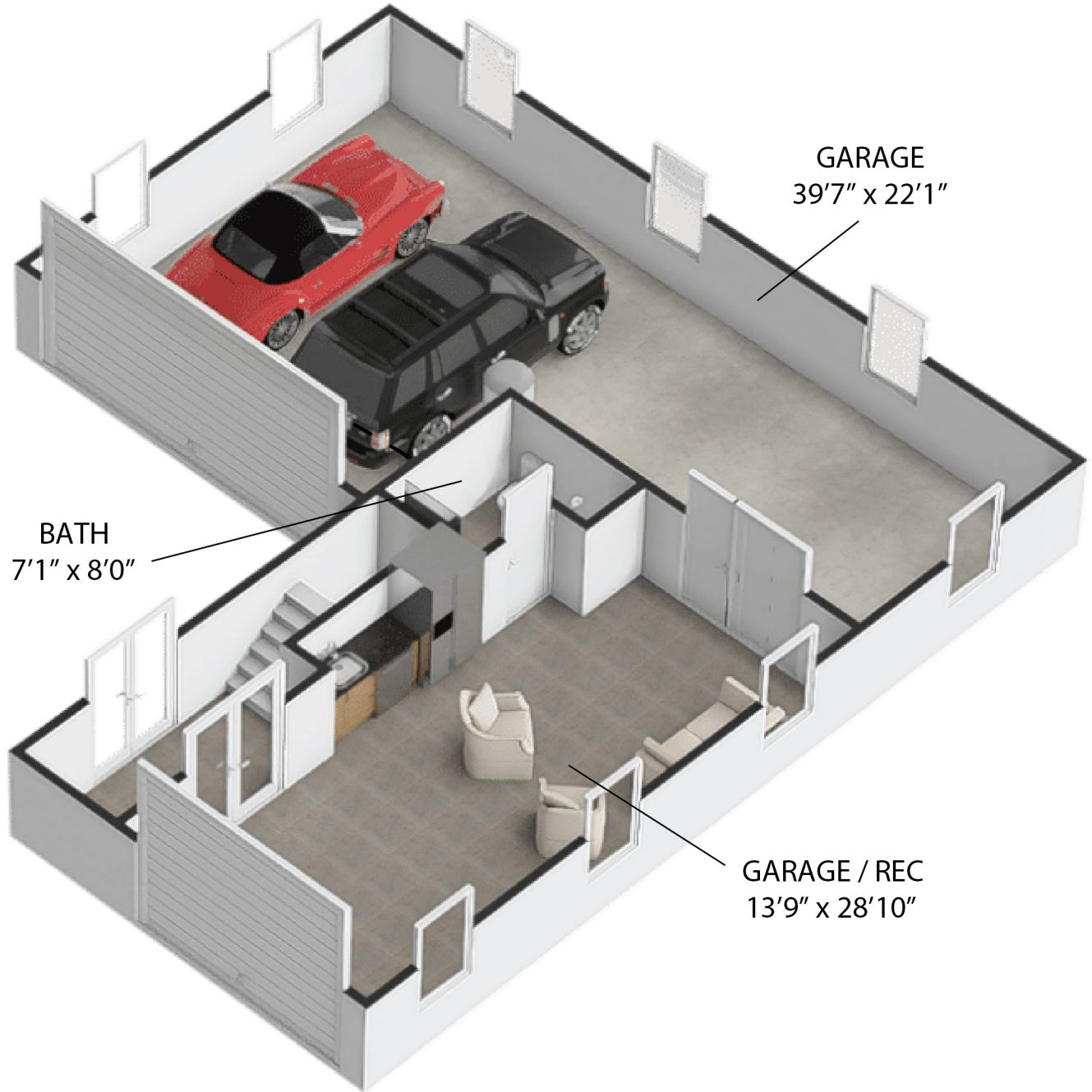
SIZES AND DIMENSIONS ARE APPROXIMATE. ACTUAL MAY VARY.



Dawn Grimshaw
c: (402) 305-8631
e: dgrimshaw@betteromaha.com
w: omahahomeprosteam.com

Carriage House
MAIN FLOOR
1522 S 32nd Ave

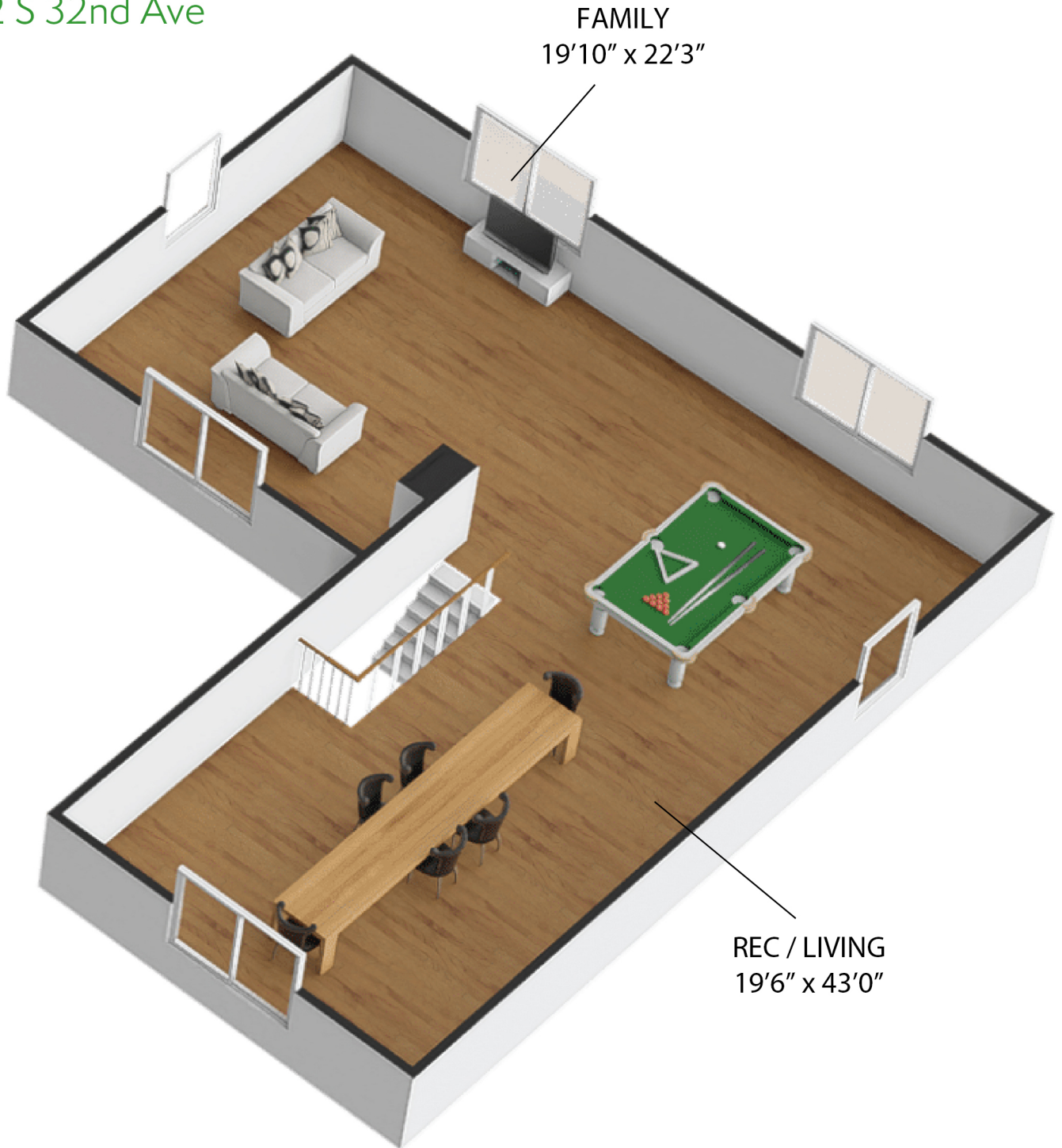
SIZES AND DIMENSIONS ARE APPROXIMATE. ACTUAL MAY VARY.



Dawn Grimshaw
c: (402) 305-8631
e: dgrimshaw@betteromaha.com
w: omahahomeprosteam.com

Carriage House
FLOOR 2
1522 S 32nd Ave

SIZES AND DIMENSIONS ARE APPROXIMATE. ACTUAL MAY VARY.



FAMILY
19'10" x 22'3"

REC / LIVING
19'6" x 43'0"



Dawn Grimshaw

c: (402) 305-8631

e: dgrimshaw@betteromaha.com

w: omahahomeprosteam.com