

1522 S 32nd Ave
Omaha, NE 68105



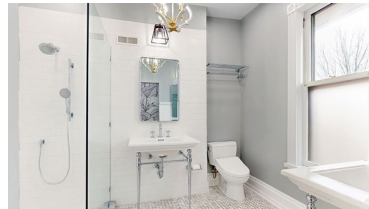
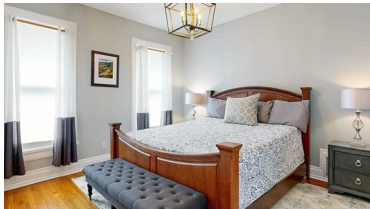
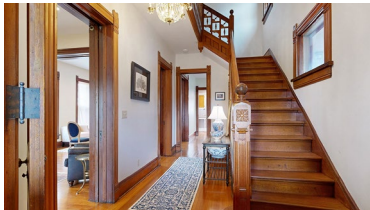
4,946 Sqft



5 bed, 4.5 bath



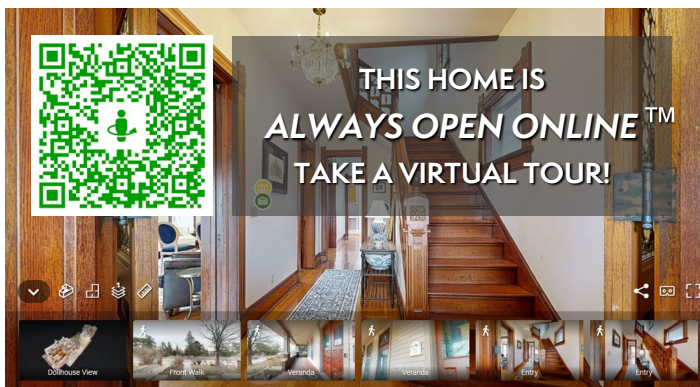
\$899,000



<https://realestate.lifestyle360vr.com/listings/1522-s-32nd-ave/>



THIS HOME IS
ALWAYS OPEN ONLINE™
TAKE A VIRTUAL TOUR!



Dawn Grimshaw

c: (402) 305-8631

e: dgrimshaw@betteromaha.com

w: omahahomeprosteam.com

DESCRIPTION

Stunning historic Eastlake Victorian overlooking Hanscom Park, completed in 1892 for attorney Charles Baldwin. This home beautifully combines historic charm with modern updates. Historic character is showcased in every detail from the original stained glass doors and transom windows to the refurbished oak and pine floors and intricate brass hardware. With nearly 5,000 sqft of living space, the property includes a 3 story main house PLUS a versatile carriage house; ideal as a separate apartment, entertaining space, or income-generating rental. The chef's kitchen impresses with custom cabinetry, granite countertops, a 6-burner Viking gas cooktop, and two sinks. Thoughtfully updated, the home features new plumbing and electrical throughout, a newer renovated primary bathroom, two added kitchenettes, rebuilt windows, and an Apple sound system. New roof in 2024. Whether you're captivated by its rich history or its modern upgrades, this home is truly a one-of-a-kind gem.

WHAT'S NEARBY?

Grocery

- Cubby's (1.61 mi)
- Walmart Neighborhood Market (1.67 mi)
- Hy-Vee (1.76 mi)

Shopping

- Midwest Pickers (0.66 mi)
- Nouvelle Eve (1.75 mi)
- Overland (1.78 mi)

Restaurants

- Kitchen Table (1.6 mi)
- Gather in Omaha (1.73 mi)
- Memoir (1.88 mi)

Coffee Shops

- Archetype Coffee (1.15 mi)
- Howlin' Hounds Coffee (1.35 mi)
- Astute Coffee (1.5 mi)

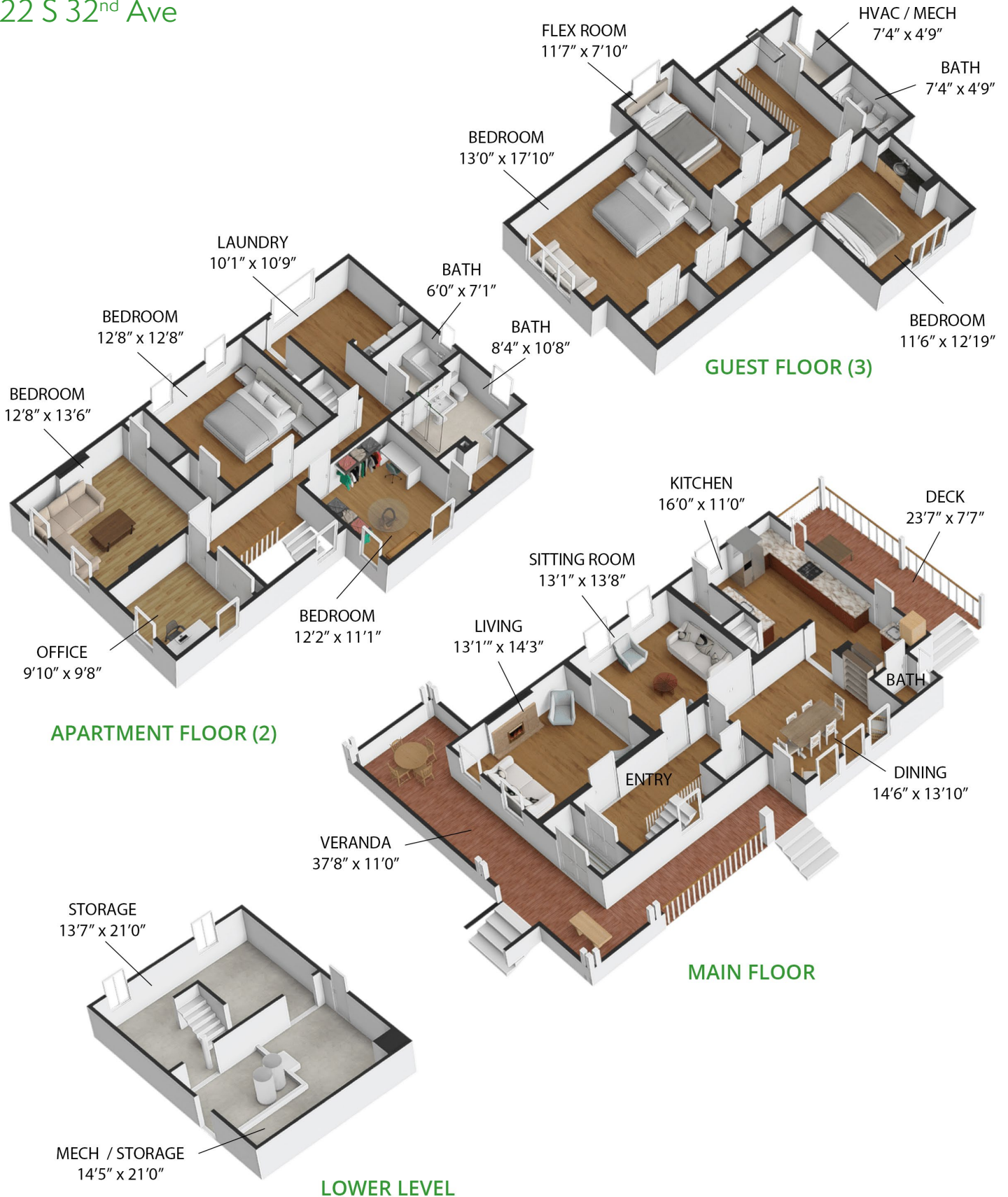
Park

- Hanscom Park (0.32 mi)
- Gene Leahy Mall (1.7 mi)
- Heartland of America Park (2.05 mi)

FLOOR PLAN

1522 S 32nd Ave

SIZES AND DIMENSIONS ARE APPROXIMATE. ACTUAL MAY VARY.



FLOOR PLAN

1522 S 32nd Ave
Carriage House

SIZES AND DIMENSIONS ARE APPROXIMATE. ACTUAL MAY VARY.

