



CENTURY 21
Realty Team

NORTHBROOK MULTI-LEVEL HOME



3251 21st Ave
Columbus, NE 68601



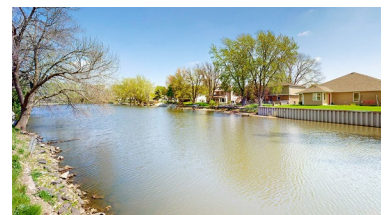
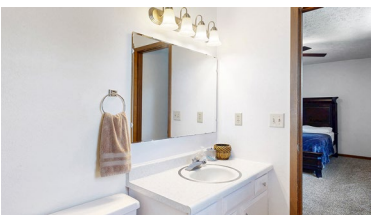
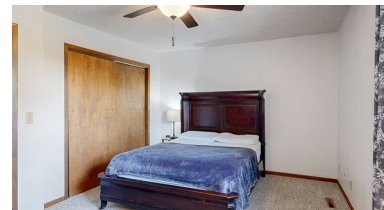
2,310 Sqft



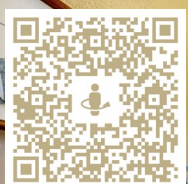
4 bed, 2 bath



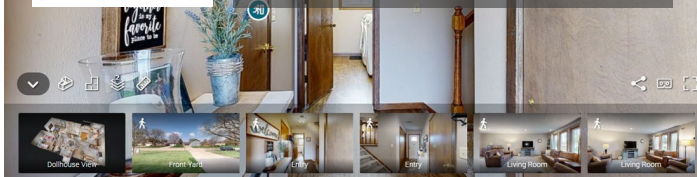
\$295,000



<https://realestate.lifestyle360vr.com/listings/3251-21st-ave/>



THIS HOME IS
ALWAYS OPEN ONLINE™
TAKE A VIRTUAL TOUR!



CENTURY 21
Realty Team

Denise Thelen

c: (402) 276-7060

e: denise@c21rt.com

w: dialdenise.com

DESCRIPTION

Inviting 4-bedroom home with scenic pond views situated in desirable Northbrook subdivision. This beautifully maintained multi-level home offers the perfect blend of comfort and style. With major improvements like newer windows, roof, siding, HVAC & more already done; means ease of care & long-term peace of mind. Enjoy serene views of a picturesque pond right from your kitchen, dining room & deck, ideal for relaxing mornings or evenings. Whether you're entertaining in the spacious main floor with formal dining area, or enjoying the outdoors in the spacious backyard, this home checks all the boxes for modern living with a tranquil touch. Lovely kitchen has breakfast bar area, newer counter tops, tiled backsplash and includes appliances! Upstairs you will find the spacious primary bedroom with a private bath. Two more bedrooms and bath finish out the upper level. In the basement you will find a family room area with brick fireplace, 4th bedroom, and wonderful storage. Convenient laundry right off the garage. Entry has new flooring and brand new front door. Large fenced backyard for extra privacy. Don't miss the opportunity to make this move-in ready gem your own! **Sale is subject to Seller finding suitable replacement housing**

WHAT'S NEARBY?

Grocery

- Hy-Vee (0.84 mi)
- Super Saver (1.04 mi)
- Walmart Supercenter (1.87 mi)

Shopping

- Bomgaars (1.5 mi)
- Hobby Lobby (1.5 mi)
- The Village Centre (2.0 mi)

Restaurants

- The Broken Mug (0.83 mi)
- Husker Steak House (1.26 mi)
- Dusters (1.31 mi)

Coffee Shops

- Scooter's Coffee (0.61 mi)
- The Broken Mug (0.83 mi)
- 38th St Coffee (1.43 mi)

Park

- Columbus Races (1.39 mi)
- Bradshaw Park (1.94 mi)
- Pawnee Park Stadium (1.95 mi)

FLOOR PLAN

3251 21ST AVE

**SIZES AND DIMENSIONS ARE APPROXIMATE. ACTUAL
MAY VARY.**

