

11252 Sunburst Dr Dr.
Papillion, NE 68046



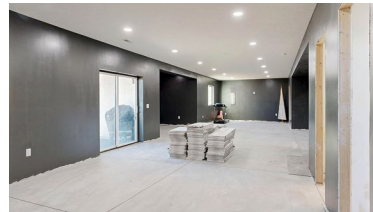
1,776 Sqft



3 bed, 2 bath



\$509,000



<https://realestate.lifestyle360vr.com/listings/11253-sunburst-dr/>



THIS HOME IS
ALWAYS OPEN ONLINE™
TAKE A VIRTUAL TOUR!



Cory Fuller

Omaha Fuller Group
BHHS Ambassador Real Estate

c: (402) 680-2393
e: cory.fuller@bhhsamb.com
w: buysellbuildomaha.com



DESCRIPTION

Just listed in Sumter Crossing, Papillion, NE! This craftsman-style ranch with amazing curb appeal, built in 2022, offers 3 bedrooms and 2 baths on a desirable corner lot with a fenced back yard and no rear neighbors. Enjoy sitting on the deck, looking out to the trees, and taking in the peaceful setting. Inside, the spacious living room and kitchen feature durable LVP flooring, 9' ceilings, a large island, granite countertops, and custom cabinetry – ideal for everyday living and entertaining. The elegant primary suite includes a walk-in shower, walk-in closet, and convenient main-floor laundry access. The huge partially finished walk-out basement has walls and ceilings already complete, tile ready for installation, and is set up for a family room, theater room, future wet bar, 4th bedroom, and 3/4 bath, plus a large storage room. Located in the award-winning Papillion-La Vista School District, this home offers space, style, and incredible future potential.

WHAT'S NEARBY?

Grocery

- Hy-Vee (3.26 mi)
- Walmart (4.12 mi)
- Fareway Stores (4.57 mi)

Shopping

- Dollar Tree (3.06 mi)
- Kajoma's Fashion Boutique (3.08 mi)
- Shadow Lake Towne Center (3.19 mi)

Restaurants

- Talus Spirits & Sustenance (1.44 mi)
- Ollie & Hobbes Craft Kitchen (2.6 mi)
- Grace Pizza and Shakes (3.12 mi)

Coffee Shops

- Cabin Coffee (2.92 mi)
- Coffee Society Café (3.28 mi)
- Back Sheep Coffee House (3.5 mi)

Parks

- Walnut Creek Recreation Area (1.16 mi)
- Portal Recreation Area (2.52 mi)
- Halleck Park (3.0 mi)



Cory Fuller

Omaha Fuller Group
BHHS Ambassador Real Estate

c: (402) 680-2393
e: cory.fuller@bhhsamb.com
w: buysellbuildomaha.com

