



109 Morton Rd
Columbus, NE 68601



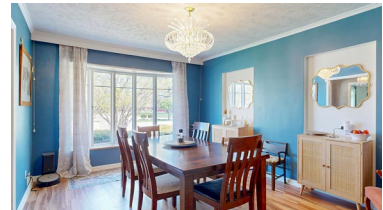
2,557 Sqft



4 bed, 4 bath



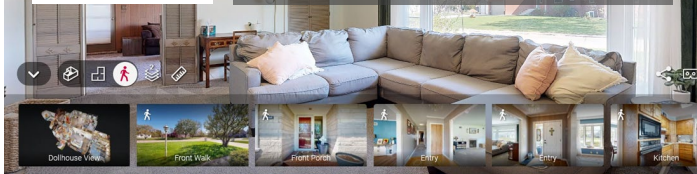
\$403,000



<https://realestate.lifestyle360vr.com/listings/109-morton-rd>



THIS HOME IS
ALWAYS OPEN ONLINE™
TAKE A VIRTUAL TOUR!



DESCRIPTION

Step into timeless charm with this spacious home nestled in one of the town's most established and character-filled neighborhoods. Surrounded by mature trees and winding streets, this property offers over 4,000 square feet of thoughtfully designed living space. Inside, you'll find an oak cabinet eat-in kitchen, 4 bedrooms and 4 bathrooms, along with both formal living and dining rooms, perfect for hosting gatherings or enjoying quiet evenings at home. The primary suite includes a dedicated dressing room, while built-in features throughout the home add both style and functionality. Upstairs offers two generously-sized bedrooms and an expansive 22x11 bonus room ideal for a playroom, office, or creative space. A large attic provides excellent storage options. The lower level is built for entertaining, featuring a spacious family room, bar area, and half bath. You'll also find a workshop, utility room, and additional storage space. Outside, enjoy a private fenced back yard complete with a swing set, large patio, and storage shed, perfect for relaxing or entertaining outdoors. A 3-car garage rounds out this impressive property. Located in a walkable neighborhood full of charm and individuality, this home is a rare opportunity to own space, character, and comfort all in one. Come see it for yourself!

WHAT'S NEARBY?

Grocery

- Joe & Al's Your Family Grocery (0.62 mi)
- Hy-Vee (0.65 mi)
- Super Saver (0.87 mi)

Shopping

- Hobby Lobby (1.1 mi)
- Bomgaars (1.3 mi)
- The Village Centre (1.6 mi)

Restaurants

- Dusters (0.62 mi)
- Reeder's 11th St Grub & Pub (0.63 mi)
- Prime 10 Steakhouse (3.21)

Coffee Shops

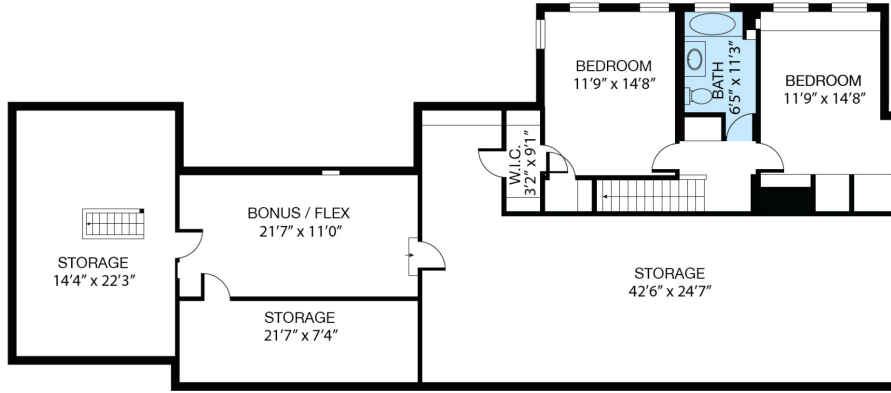
- Sooter's Coffee (0.21 mi)
- The Broken Mug (0.53 mi)
- 38th Street Coffee (1.81 mi)

Park

- Columbus Races (0.95)
- Pawnee Park Stadium (1.24)
- Bradshaw Park (1.63 mi)

FLOOR PLAN
109 MORTON RD

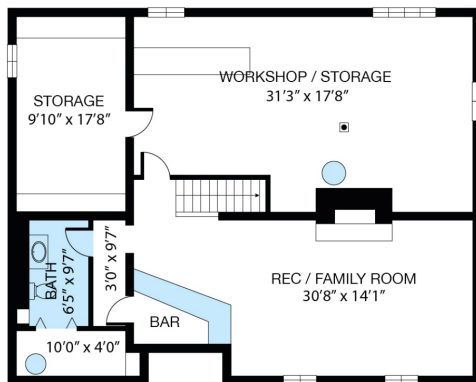
SIZES AND DIMENSIONS ARE APPROXIMATE. ACTUAL MAY VARY.



FLOOR 2



MAIN FLOOR



LOWER LEVEL