



6453 Michael Dr
Bellevue, NE 68157



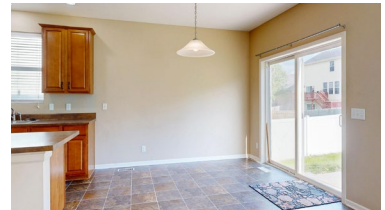
2,314 Sqft



4 bed, 2.5 bath



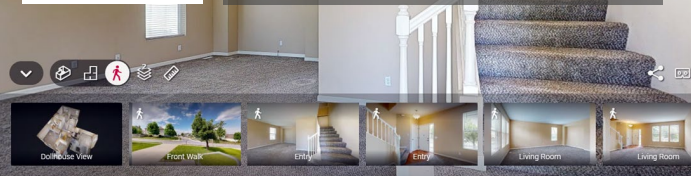
\$365,000



<https://realestate.lifestyle360vr.com/listings/6453-michael-dr/>



THIS HOME IS
ALWAYS OPEN ONLINE™
TAKE A VIRTUAL TOUR!



Kayla Petersen

c: (712) 307-0470

e: kayla@turnkeyservicesrealty.com

w: turnkeyservicesrealty.com

DESCRIPTION

Welcome home to Stockmans Hollow! This beautifully maintained two-story home offers 4 bedrooms, 2.5 baths, and the perfect combination of space, comfort, and convenience. Enjoy the benefit of recent major updates, including new carpet and interior paint in 2024 plus a new roof & HVAC in 2025. The open kitchen features stainless steel appliances, center island, and abundant storage, flowing seamlessly into the inviting family room with cozy fireplace. Upstairs you'll love the oversized bedrooms, generous closet space, and convenient second-floor laundry. The spacious primary suite includes dual sinks and two closets for exceptional storage. Enjoy outdoor living in the fully fenced backyard with durable vinyl fencing and patio, perfect for relaxing, entertaining, pets, or play. Conveniently located near parks, shopping, dining, schools, I-80, and just 8 miles from Offutt Air Force Base!

WHAT'S NEARBY?

Grocery

- Fareway (0.81 mi)
- Supermercado Nuestra Familia (1.41 mi)
- Baker's Supermarkets (3.08 mi)

Shopping

- Treasured Things (2.44 mi)
- Shadow Lake Towne Center (2.77 mi)
- One Pacific Place Shopping Center (6.09)

Restaurants

- Szechwan Bistro (0.97 mi)
- Winchester Bar & Grill (2.27 mi)
- Talus Spirits & Sustenance (4.08 mi)

Coffee Shops

- Starbucks (0.91 mi)
- Coffee Alley - Callejon del Café (1.46 mi)
- Coffee Society Café (3.55 mi)

Park

- Banner Park (0.99 mi)
- Aspen Park (1.11 mi)
- Faulkland Park (1.38 mi)